



MLS 6504422 Lake Land

\$549,000



Description:

170 FEET OF SHORELINE ON LAKE SALLIE. Undeveloped lake lots are exceptionally rare on the top tier lakes...but here it is! A chance to own almost $\frac{3}{4}$ of an acre and 170 front feet of fine shoreline just around the corner from the Shoreham and some of the area's finest golf courses. This lot is primed and ready for a build. Currently a storage garage sits on this gently sloped lot with just enough of a lift to ensure proper water drainage while a few steps to the water's edge invite the owner to enjoy lake life. Take the tram over to Detroit Lake and enjoy a multitude of amenities from restaurants to bands on the beach and epic fireworks or stay on the quieter waters of Lake Sallie and fish or float your way through the seasons. Build now or hold this piece in your portfolio. Lake lots like this are hard to find.

Additional Details:

Lot Acres	0.71
Lot Dimensions	.71
School District	22
Taxes	\$2,962
Taxes with Assessments	\$2,962
Tax Year	2023

Additional Features:

Driving Directions:

13043 W Lake Sallie Drive.



Listed By:
RE/MAX LAKES REGION

Affinity Real Estate Inc. participates in the Regional Multiple Listing Service of Minnesota, Inc Broker Reciprocity (sm) program, allowing us to display other broker's listings on our website. All properties are subject to prior sale, change or withdrawal.



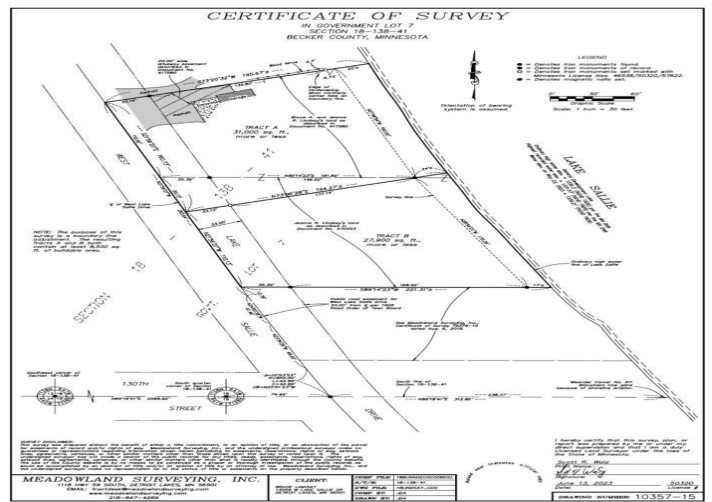
Call Affinity Real Estate

218-237-3333

info@affinityrealestate.com



Affinity Real Estate - 600 Park Avenue South - Park Rapids MN 56470



website: www.AffinityRealEstate.com | email: info@affinityrealestate.com | office: 218-237-3333 | fax: 218-237-3377

Affinity
REAL ESTATE INC

\$549,000
MLS 6504422 Lake Land
13043 Lake Sallie Drive
Detroit Lakes MN 56501



website: www.AffinityRealEstate.com | email: info@affinityrealestate.com | office: 218-237-3333 | fax: 218-237-3377



\$549,000

MLS 6504422 Lake Land
13043 Lake Sallie Drive
Detroit Lakes MN 56501