



MLS 6504423 Residential

\$289,900

1,766 sq ft
3 bedrooms
2 baths

706 Maple Avenue
Park Rapids MN 56470

Status: Pending

Description:

One level living with no stairs inside or out! This wonderful 3 bedroom, 2 bath home features stainless steel appliances, an open floor plan (perfect for entertaining), an extra large primary suite with private bath and so much more! Garage is totally finished and heated, living room has a gas fireplace, spacious laundry room with sink and top quality construction. An excellent location close to the new Aldi grocery store and Walmart on the east side of Park Rapids. Included with the sale is one full year of mowing and snow removal!

Additional Details:

| | |
|------------------------|---------------|
| Year Built | 2024 |
| Lot Acres | 0.2 |
| Lot Dimensions | 127x70x127x70 |
| Garage Stalls | 2 |
| School District | 309 |
| Taxes | \$174 |
| Taxes with Assessments | \$174 |
| Tax Year | 2024 |

Additional Features:

Fuel: Natural Gas **Heat:** Ductless Mini-Split, Fireplace(s), Radiant Floor

Driving Directions:

From Highway 34 and 71, head east on 34 to the 2nd stoplight (Henrietta Avenue), then left (south) on Henrietta for about 3 blocks to 6th Street, then right on 6th and go one block to Maple, then right to the property on the corner of Maple and Walnut.



Listed By:
Keller Williams Realty Professionals

Affinity Real Estate Inc. participates in the Regional Multiple Listing Service of Minnesota, Inc Broker Reciprocity (sm) program, allowing us to display other broker's listings on our website. All properties are subject to prior sale, change or withdrawal.



Call Affinity Real Estate

218-237-3333

info@affinityrealestate.com



Affinity Real Estate - 600 Park Avenue South - Park Rapids MN 56470



website: www.AffinityRealEstate.com | email: info@affinityrealestate.com | office: 218-237-3333 | fax:218-237-3377



\$289,900
MLS 6504423 Residential
706 Maple Avenue
Park Rapids MN 56470



website: www.AffinityRealEstate.com | email: info@affinityrealestate.com | office: 218-237-3333 | fax:218-237-3377

Affinity
REAL ESTATE INC

\$289,900
MLS 6504423 Residential
706 Maple Avenue
Park Rapids MN 56470



website: www.AffinityRealEstate.com | email: info@affinityrealestate.com | office: 218-237-3333 | fax: 218-237-3377

Affinity
REAL ESTATE INC

\$289,900
MLS 6504423 Residential
706 Maple Avenue
Park Rapids MN 56470



website: www.AffinityRealEstate.com | email: info@affinityrealestate.com | office: 218-237-3333 | fax:218-237-3377



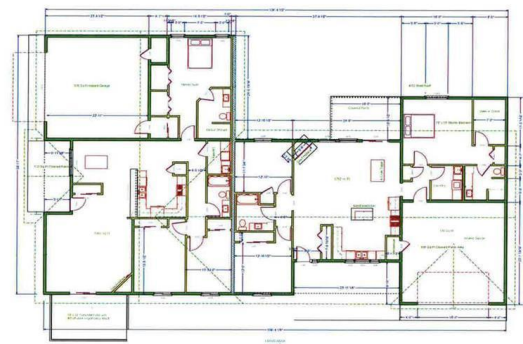
\$289,900
MLS 6504423 Residential
706 Maple Avenue
Park Rapids MN 56470



website: www.AffinityRealEstate.com | email: info@affinityrealestate.com | office: 218-237-3333 | fax:218-237-3377

Affinity
REAL ESTATE INC

\$289,900
MLS 6504423 Residential
706 Maple Avenue
Park Rapids MN 56470



website: www.AffinityRealEstate.com | email: info@affinityrealestate.com | office: 218-237-3333 | fax:218-237-3377



\$289,900
MLS 6504423 Residential
706 Maple Avenue
Park Rapids MN 56470