



MLS 6504452 Residential

\$279,900

1,908 sq ft
3 bedrooms
2 baths

1102 Walnut Lane
Park Rapids MN 56470

Status: Pending

Description:

Nearing completion! Fantastic new construction, all on one level! 3 bedrooms, 2 baths and a very spacious floor plan. Low maintenance home in an excellent location near the new Aldi grocery store and Walmart on the east side of Park Rapids. Excellent appliance package with stainless steel finishes. Bright, light and airy interiors. This home is ready for your finishing requests. Also available (and now completed) is the home at 706 Maple, adjacent to this home. Come look at both and decide which you prefer! Included with the sale is one full year of mowing and snow removal!

Additional Details:

Year Built	2024
Lot Acres	0.2
Lot Dimensions	127x72x127x72
Garage Stalls	2
School District	309
Taxes	\$174
Taxes with Assessments	\$174
Tax Year	2024

Additional Features:

Fuel: Natural Gas **Heat:** Ductless Mini-Split, Fireplace(s), Radiant Floor

Driving Directions:

From Hwy 34 and 71 in Park Rapids, go east to the 2nd stoplight (Henrietta Avenue), then south on Henrietta for 3 blocks to 6th Street, then right on 6th for one block to Maple Avenue, then right on Maple to the corner of Maple and Walnut. See signs.



Listed By:
Keller Williams Realty Professionals

Affinity Real Estate Inc. participates in the Regional Multiple Listing Service of Minnesota, Inc Broker Reciprocity (sm) program, allowing us to display other broker's listings on our website. All properties are subject to prior sale, change or withdrawal.



Call Affinity Real Estate

218-237-3333

info@affinityrealestate.com



Affinity Real Estate - 600 Park Avenue South - Park Rapids MN 56470



website: www.AffinityRealEstate.com | email: info@affinityrealestate.com | office: 218-237-3333 | fax:218-237-3377

Affinity
REAL ESTATE INC

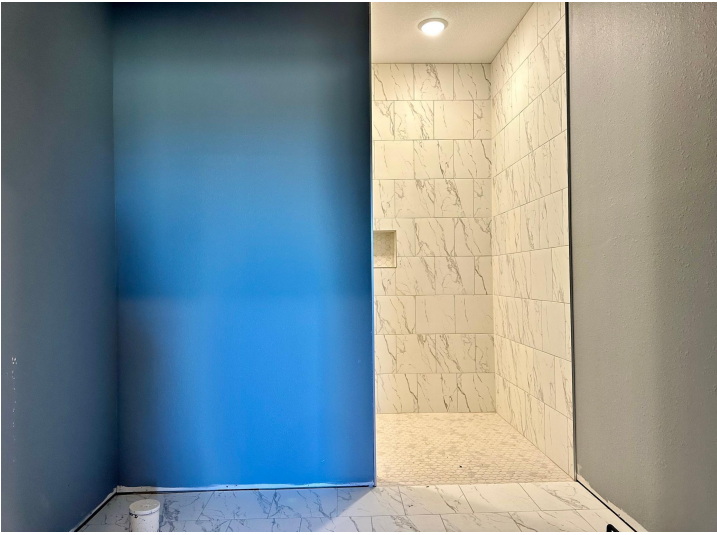
\$279,900
MLS 6504452 Residential
1102 Walnut Lane
Park Rapids MN 56470



website: www.AffinityRealEstate.com | email: info@affinityrealestate.com | office: 218-237-3333 | fax:218-237-3377



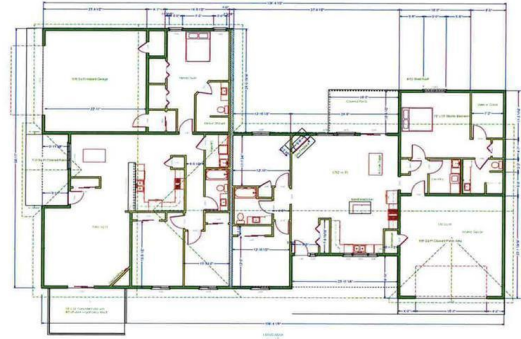
\$279,900
MLS 6504452 Residential
1102 Walnut Lane
Park Rapids MN 56470



website: www.AffinityRealEstate.com | email: info@affinityrealestate.com | office: 218-237-3333 | fax:218-237-3377



\$279,900
MLS 6504452 Residential
1102 Walnut Lane
Park Rapids MN 56470



website: www.AffinityRealEstate.com | email: info@affinityrealestate.com | office: 218-237-3333 | fax:218-237-3377



\$279,900
MLS 6504452 Residential
1102 Walnut Lane
Park Rapids MN 56470