



MLS 6504845 Residential

\$219,900

864 sq ft
1 bedrooms
1 baths

38510 315th Avenue
Laporte MN 56461

Status: Active

Description:

Discover your very own slice of the Bougie Northland with this exquisitely remodeled 1-bedroom, 1-bathroom log cabin, situated on a generous 13.8-acre lot abutting over 3000 acres of pristine county land. Offering a mix of rugged beauty and modern comfort, this haven is perfect for those who seek the thrill of the hunt or the silence of nature without sacrificing luxury.

With design elements like a soaking tub for winding down after a day outdoors, and a beautifully tiled shower, your comfort is guaranteed. The property's vast grounds present an ideal family retreat or an exclusive hunting getaway. This hidden gem in the Northland combines the rustic appeal of the wilds with upmarket elegance, offering an unparalleled lifestyle where deer and other wildlife roam freely. Don't miss out on the opportunity to own this magnificent retreat, where luxury meets wilderness – ready to welcome anyone longing for their own secluded piece of paradise.

Additional Details:

Year Built	1986
Lot Acres	13.81
Lot Dimensions	115x665x645x662x772x
School District	306
Taxes	\$926
Taxes with Assessments	\$926
Tax Year	2023

Additional Features:

Fuel: Propane, Wood **Heat:** Radiant Floor, Wood Stove

Driving Directions:

From Laporte, East on HWY 200, Turn east on county rd 45, Follow North on 45. East on 390th st 1 mile. South on 315 for .5 mile. Driveway on the left hand side. Blue Number 38510.



Listed By:
EXIT Realty Bemidji

Affinity Real Estate Inc. participates in the Regional Multiple Listing Service of Minnesota, Inc Broker Reciprocity (sm) program, allowing us to display other broker's listings on our website. All properties are subject to prior sale, change or withdrawal.



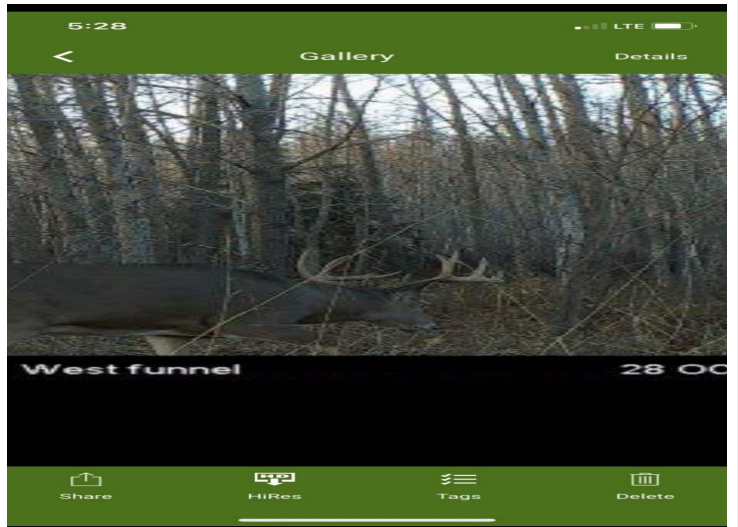
Call Affinity Real Estate

218-237-3333

info@affinityrealestate.com



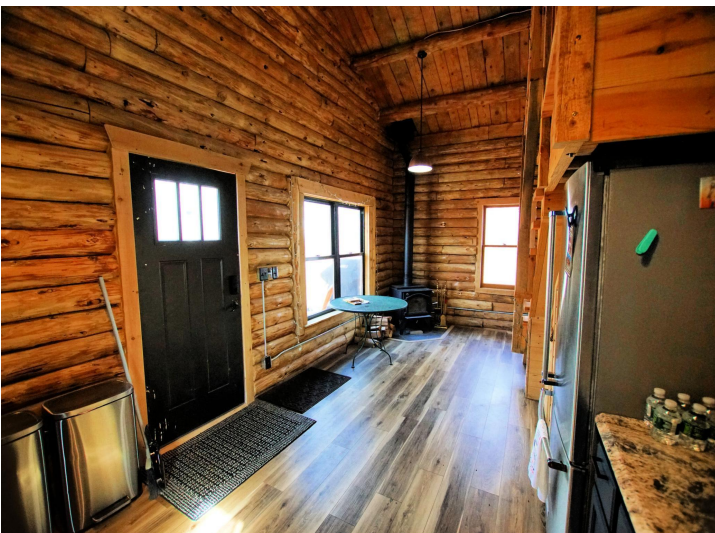
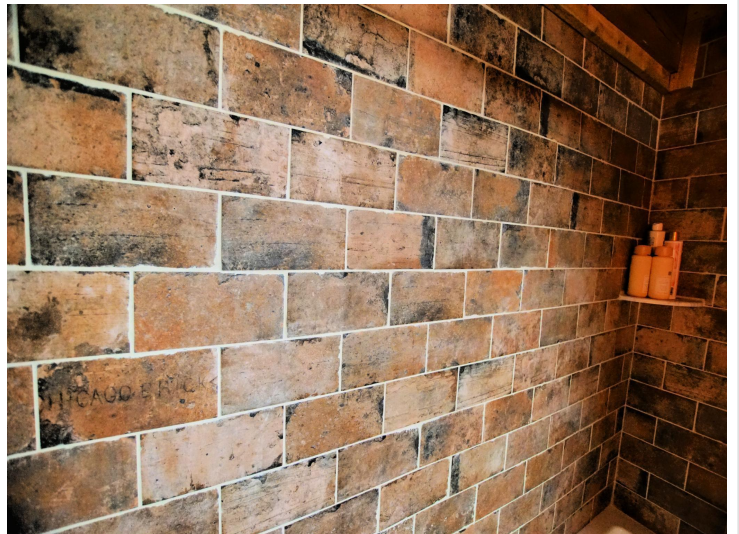
Affinity Real Estate - 600 Park Avenue South - Park Rapids MN 56470



website: www.AffinityRealEstate.com | email: info@affinityrealestate.com | office: 218-237-3333 | fax: 218-237-3377



\$219,900
 MLS 6504845 Residential
 38510 315th Avenue
 Laporte MN 56461



website: www.AffinityRealEstate.com | email: info@affinityrealestate.com | office: 218-237-3333 | fax: 218-237-3377

Affinity
REAL ESTATE INC

\$219,900
MLS 6504845 Residential
38510 315th Avenue
Laporte MN 56461



website: www.AffinityRealEstate.com | email: info@affinityrealestate.com | office: 218-237-3333 | fax: 218-237-3377

Affinity
REAL ESTATE INC

\$219,900
MLS 6504845 Residential
38510 315th Avenue
Laporte MN 56461



website: www.AffinityRealEstate.com | email: info@affinityrealestate.com | office: 218-237-3333 | fax: 218-237-3377



\$219,900
 MLS 6504845 Residential
 38510 315th Avenue
 Laporte MN 56461



website: www.AffinityRealEstate.com | email: info@affinityrealestate.com | office: 218-237-3333 | fax: 218-237-3377



\$219,900
MLS 6504845 Residential
38510 315th Avenue
Laporte MN 56461