



MLS 6505332 Lake Home

\$659,000

2,197 sq ft
3 bedrooms
2 baths

40504 Kramer Street
Ponsford MN 56575

Waterfront: Ice Cracking

Status: Active

Description:

Rare opportunity to own a piece of history and create unparalleled memories. This restored lodge boasting two cabins is nestled along the shores of Ice Cracking Lake. Experience privacy and tranquility like never before with 5.71 acres & 500 ft of lakeshore. A custom iron gate greets you as you enter the canopy-covered drive from the many mature trees. The main home exudes warmth and character with full log construction, stunning stone fireplace and vaulted ceilings. Second cabin recently updated with exterior paint and all new flooring, is sure to spoil your guests with full accommodations. Your favorite spot will undoubtedly be the panoramic views from inside the renovated boathouse, offering even more space to relax and catch a brilliant sunset. 24x30 garage is perfect for your storage needs. Endless recreation with your own dock for fishing, hard sand swimming beach & boat launch. Hunt, ATV, & snowmobile at the nearby Tamarac National Refuge & DNR lands. Don't miss this hidden gem!

Additional Details:

Year Built	1936
Lot Acres	5.71
Lot Dimensions	482x721x460x680
Garage Stalls	2
School District	22
Taxes	\$2,794
Taxes with Assessments	\$2,794
Tax Year	2023

Additional Features:

Basement: Partial **Fuel:** Propane **Garage:** 2 **Heat:** Baseboard, Forced Air, Fireplace(s) **Sewer:** Septic System Compliant - Yes **Water:** Well **Air Conditioning:** None

Driving Directions:

East on Hwy. 34, to Hwy. 39. North on 39 to County Road 35, West on 35 to Ice Cracking Road, Left on Kramer to Property.



Listed By:
Norton Realty, Inc

Affinity Real Estate Inc. participates in the Regional Multiple Listing Service of Minnesota, Inc Broker Reciprocity (sm) program, allowing us to display other broker's listings on our website. All properties are subject to prior sale, change or withdrawal.



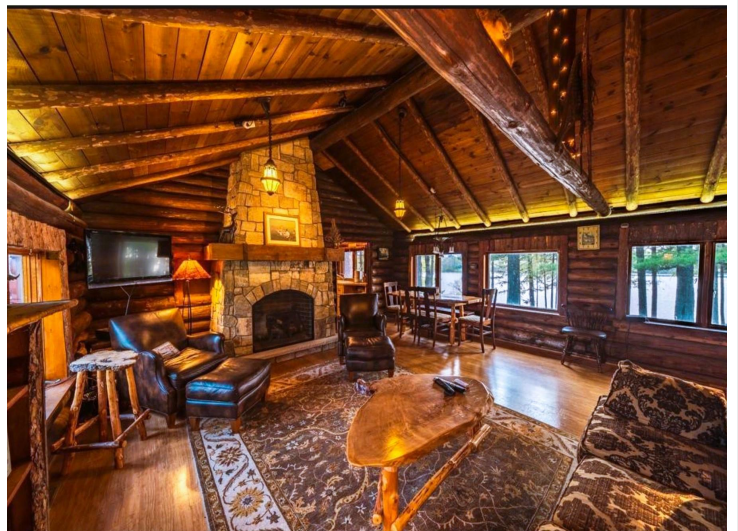
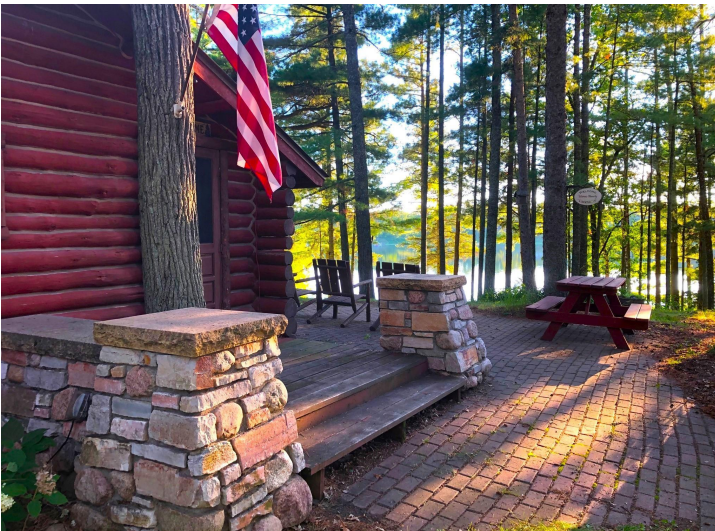
Call Affinity Real Estate

218-237-3333

info@affinityrealestate.com



Affinity Real Estate - 600 Park Avenue South - Park Rapids MN 56470



website: www.AffinityRealEstate.com | email: info@affinityrealestate.com | office: 218-237-3333 | fax: 218-237-3377

Affinity
REAL ESTATE INC

\$659,000

MLS 6505332 Lake Home
40504 Kramer Street
Ponsford MN 56575



website: www.AffinityRealEstate.com | email: info@affinityrealestate.com | office: 218-237-3333 | fax: 218-237-3377

Affinity
REAL ESTATE INC

\$659,000
MLS 6505332 Lake Home
40504 Kramer Street
Ponsford MN 56575



website: www.AffinityRealEstate.com | email: info@affinityrealestate.com | office: 218-237-3333 | fax: 218-237-3377

Affinity
REAL ESTATE INC

\$659,000

MLS 6505332 Lake Home
40504 Kramer Street
Ponsford MN 56575



website: www.AffinityRealEstate.com | email: info@affinityrealestate.com | office: 218-237-3333 | fax: 218-237-3377

Affinity
REAL ESTATE INC

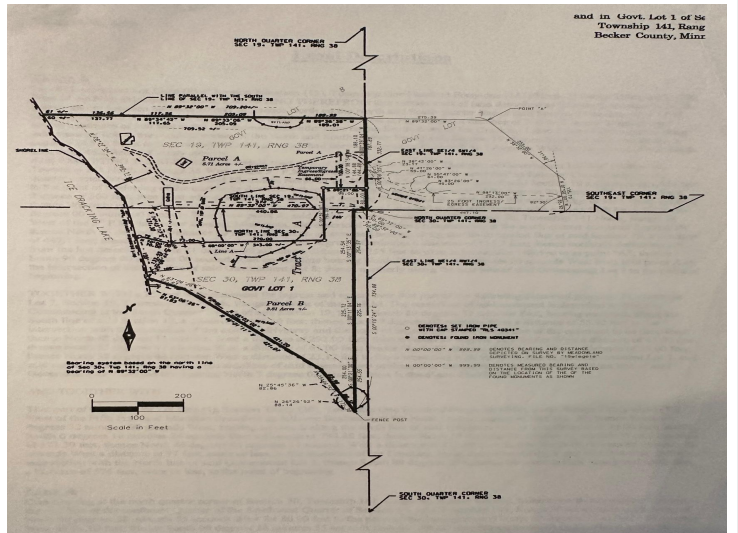
\$659,000
MLS 6505332 Lake Home
40504 Kramer Street
Ponsford MN 56575



website: www.AffinityRealEstate.com | email: info@affinityrealestate.com | office: 218-237-3333 | fax: 218-237-3377

Affinity
REAL ESTATE INC

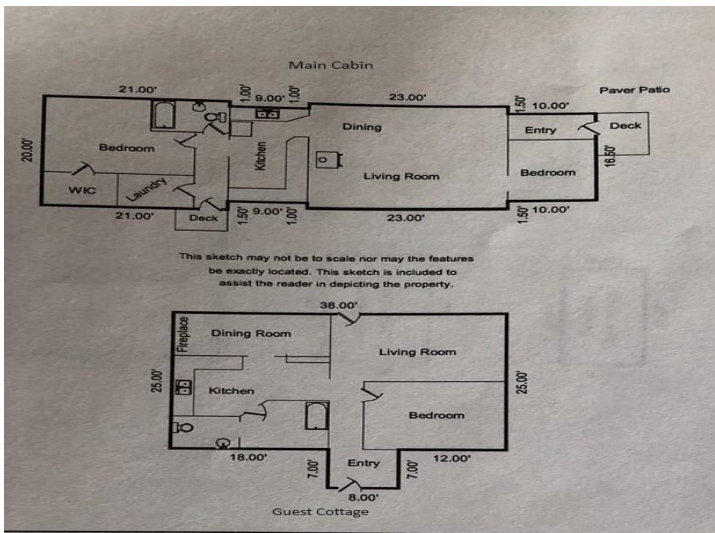
\$659,000
MLS 6505332 Lake Home
40504 Kramer Street
Ponsford MN 56575



website: www.AffinityRealEstate.com | email: info@affinityrealestate.com | office: 218-237-3333 | fax: 218-237-3377



\$659,000
 MLS 6505332 Lake Home
 40504 Kramer Street
 Ponsford MN 56575



website: www.AffinityRealEstate.com | email: info@affinityrealestate.com | office: 218-237-3333 | fax: 218-237-3377



\$659,000

MLS 6505332 Lake Home
40504 Kramer Street
Ponsford MN 56575