



MLS 6505494 Lake Home

**\$359,900**

1,568 sq ft  
1 bedrooms  
2 baths

19113 Eastbay Drive  
Park Rapids MN 56470

Waterfront: Mud Lake (29025100)

Status: Active

#### Description:

Experience the allure of lakeside living with this beautifully maintained home, boasting an expansive 200 feet of shoreline on the tranquil Eastbay of Fish Hook Lake. Gradual elevation to the water, this property offers stunning views and easy lake access, perfect for fishing or boating. Featuring 1,568 finished square feet of comfortable living space, this home includes a large bedroom on the upper level with potential to easily convert into two bedrooms. The spacious full basement presents impressive 10-foot ceilings and an egress window, ripe for conversion into additional bedrooms or a recreational area. Step outside onto the 8x14 deck accessible via patio doors off the combined dining/living room. The home is efficiently heated using a natural gas hot water boiler system, complemented by a mini-split unit for air conditioning and secondary heating. Additional amenities include a laundry room in the basement, a sizeable 2-car detached garage, and a convenient RV hookup spot

#### Additional Details:

Year Built	2002
Lot Acres	2.28
Lot Dimensions	200x524x200x448
Garage Stalls	2
School District	309
Taxes	\$1,496
Taxes with Assessments	\$1,696
Tax Year	2023

#### Additional Features:

**Fuel:** Electric, Natural Gas **Heat:** Baseboard, Boiler, Ductless Mini-Split, Hot Water, Radiant

#### Driving Directions:

From Hwys 71/34 in Park Rapids, go East on Hwy 34 for 0.5 miles. Turn left on N Central Ave/County 1 and go 1.3 miles. Turn left onto Eastbay Dr and go 0.3 miles, property is on the right, 19113 Eastbay Dr.



Listed By:  
Coldwell Banker Crown Realtors

Affinity Real Estate Inc. participates in the Regional Multiple Listing Service of Minnesota, Inc Broker Reciprocity (sm) program, allowing us to display other broker's listings on our website. All properties are subject to prior sale, change or withdrawal.



**Call Affinity Real Estate**

**218-237-3333**

**info@affinityrealestate.com**



**Affinity Real Estate - 600 Park Avenue South - Park Rapids MN 56470**





website: [www.AffinityRealEstate.com](http://www.AffinityRealEstate.com) | email: [info@affinityrealestate.com](mailto:info@affinityrealestate.com) | office: 218-237-3333 | fax: 218-237-3377

**Affinity**  
REAL ESTATE INC

**\$359,900**  
MLS 6505494 Lake Home  
19113 Eastbay Drive  
Park Rapids MN 56470





website: [www.AffinityRealEstate.com](http://www.AffinityRealEstate.com) | email: [info@affinityrealestate.com](mailto:info@affinityrealestate.com) | office: 218-237-3333 | fax: 218-237-3377

**Affinity**  
REAL ESTATE INC

**\$359,900**  
MLS 6505494 Lake Home  
19113 Eastbay Drive  
Park Rapids MN 56470





website: [www.AffinityRealEstate.com](http://www.AffinityRealEstate.com) | email: [info@affinityrealestate.com](mailto:info@affinityrealestate.com) | office: 218-237-3333 | fax: 218-237-3377

**Affinity**  
REAL ESTATE INC

**\$359,900**  
MLS 6505494 Lake Home  
19113 Eastbay Drive  
Park Rapids MN 56470





website: [www.AffinityRealEstate.com](http://www.AffinityRealEstate.com) | email: [info@affinityrealestate.com](mailto:info@affinityrealestate.com) | office: 218-237-3333 | fax: 218-237-3377



**\$359,900**  
 MLS 6505494 Lake Home  
 19113 Eastbay Drive  
 Park Rapids MN 56470



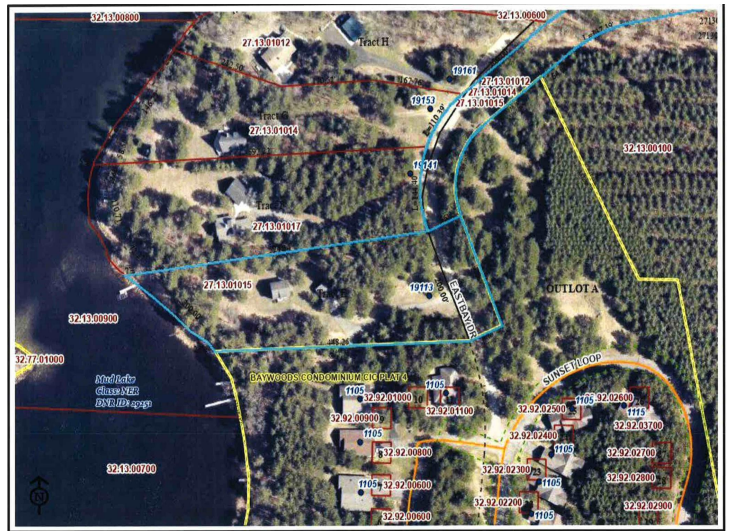


website: [www.AffinityRealEstate.com](http://www.AffinityRealEstate.com) | email: [info@affinityrealestate.com](mailto:info@affinityrealestate.com) | office: 218-237-3333 | fax: 218-237-3377



**\$359,900**  
 MLS 6505494 Lake Home  
 19113 Eastbay Drive  
 Park Rapids MN 56470





website: [www.AffinityRealEstate.com](http://www.AffinityRealEstate.com) | email: [info@affinityrealestate.com](mailto:info@affinityrealestate.com) | office: 218-237-3333 | fax: 218-237-3377



**\$359,900**  
 MLS 6505494 Lake Home  
 19113 Eastbay Drive  
 Park Rapids MN 56470