

MLS 6505781 Land

\$22,900

2.5 Acres
Subdivided

421XX 380th Ave #H
Dent MN 56573

Status: Active

Description:

A Building Site with No Covenants at an Unbeatable Price!! This 2.5 Acre Corner Lot is perfectly located just south of the Paul Lake public access & would make an excellent building site for a Country home, Shouse, or storage building for all the toys. Don't miss out on this amazing opportunity!

Additional Details:

Lot Acres	2.5
Lot Dimensions	330* x 330* x 291* x 289*
School District	549
Taxes	\$852
Taxes with Assessments	\$932
Tax Year	2023

Additional Features:

Driving Directions:

From Dent MN, Take 108 East. After about 1/2 Mile, turn left onto 380th Ave / Wolf Lake Rd. Continue for about 1.5 Miles & turn left onto 423rd St. Your destination will be the first corner lot on your right side.



Listed By:
Jack Chivers Realty

Affinity Real Estate Inc. participates in the Regional Multiple Listing Service of Minnesota, Inc Broker Reciprocity (sm) program, allowing us to display other broker's listings on our website. All properties are subject to prior sale, change or withdrawal.



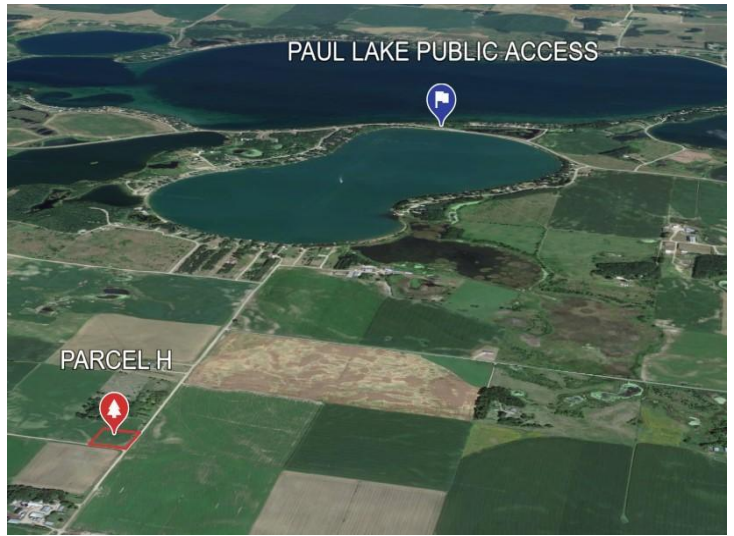
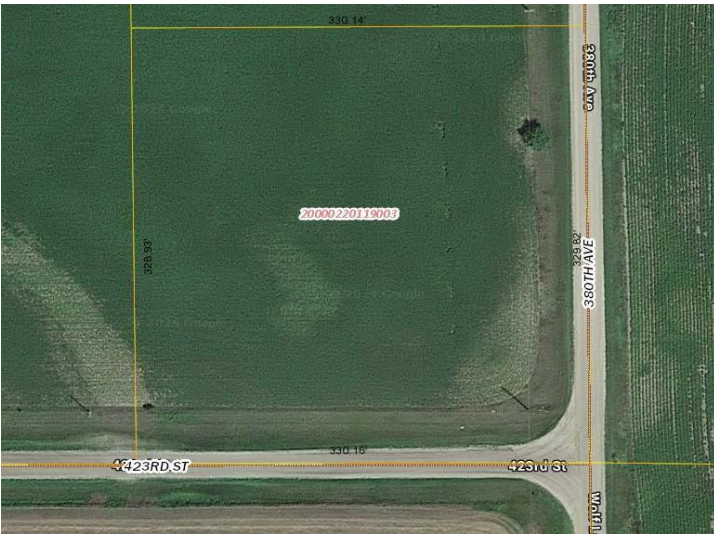
Call Affinity Real Estate

218-237-3333

info@affinityrealestate.com



Affinity Real Estate - 600 Park Avenue South - Park Rapids MN 56470



website: www.AffinityRealEstate.com | email: info@affinityrealestate.com | office: 218-237-3333 | fax: 218-237-3377



\$22,900
MLS 6505781 Land
421XX 380th Ave #H
Dent MN 56573