



MLS 6505808 Lake Home

\$499,900

1,904 sq ft
3 bedrooms
2 baths

715 Lake Shore Drive
Bemidji MN 56601

Waterfront: Bemidji (main lake)

Status: Hold

Description:

Welcome to the Bixby Condos right on the south shore of Lake Bemidji. This newer 3bd, 2 bath top-floor corner unit boasts fantastic views of Lake Bemidji! The home has a welcoming open floor plan, 2 huge walk-in closets & a lg entry closet for plenty of storage. Enjoy the sunrises, sunsets, fireworks & wildlife from the balcony & every window as they all face the lake. This is a very energy efficient building which keeps your electric bill down. (Please review attached documents re: heating/cooling system.) Each unit is assigned a parking space & a fenced storage space in the heated garage. The association fees pay for the bulk of utility costs. Located near the Nymore Beach Public Water Access as well as the City rented boat dock. Enjoy the convenience of the Paul Bunyan bike trail, miles of trails to explore via walking or biking. This location makes it ideal being close to many local community events. Make the Bixby Condos your forever, easy living home! Call for your private tour.

Additional Details:

Year Built	2023
Lot Dimensions	348x228
Garage Stalls	1
School District	31
Taxes	\$982
Taxes with Assessments	\$982
Tax Year	2023

Additional Features:

Basement: None **Fuel:** Electric **Garage:** 1 **Heat:** Heat Pump **Sewer:** City Sewer/Connected **Water:** City Water/Connected **Air Conditioning:** Central Air

Driving Directions:

East on 1st Street to Central Ave SE, Left to Lakeshore Drive



Listed By:
Better Homes and Gardens Real Estate First Choice

Affinity Real Estate Inc. participates in the Regional Multiple Listing Service of Minnesota, Inc Broker Reciprocity (sm) program, allowing us to display other broker's listings on our website. All properties are subject to prior sale, change or withdrawal.



Call Affinity Real Estate

218-237-3333

info@affinityrealestate.com



Affinity Real Estate - 600 Park Avenue South - Park Rapids MN 56470



website: www.AffinityRealEstate.com | email: info@affinityrealestate.com | office: 218-237-3333 | fax: 218-237-3377



\$499,900
 MLS 6505808 Lake Home
 715 Lake Shore Drive
 Bemidji MN 56601



website: www.AffinityRealEstate.com | email: info@affinityrealestate.com | office: 218-237-3333 | fax: 218-237-3377



\$499,900

MLS 6505808 Lake Home
715 Lake Shore Drive
Bemidji MN 56601



website: www.AffinityRealEstate.com | email: info@affinityrealestate.com | office: 218-237-3333 | fax: 218-237-3377

Affinity
REAL ESTATE INC

\$499,900
MLS 6505808 Lake Home
715 Lake Shore Drive
Bemidji MN 56601



website: www.AffinityRealEstate.com | email: info@affinityrealestate.com | office: 218-237-3333 | fax: 218-237-3377



\$499,900
 MLS 6505808 Lake Home
 715 Lake Shore Drive
 Bemidji MN 56601



website: www.AffinityRealEstate.com | email: info@affinityrealestate.com | office: 218-237-3333 | fax: 218-237-3377

Affinity
REAL ESTATE INC

\$499,900
MLS 6505808 Lake Home
715 Lake Shore Drive
Bemidji MN 56601



website: www.AffinityRealEstate.com | email: info@affinityrealestate.com | office: 218-237-3333 | fax: 218-237-3377

Affinity
REAL ESTATE INC

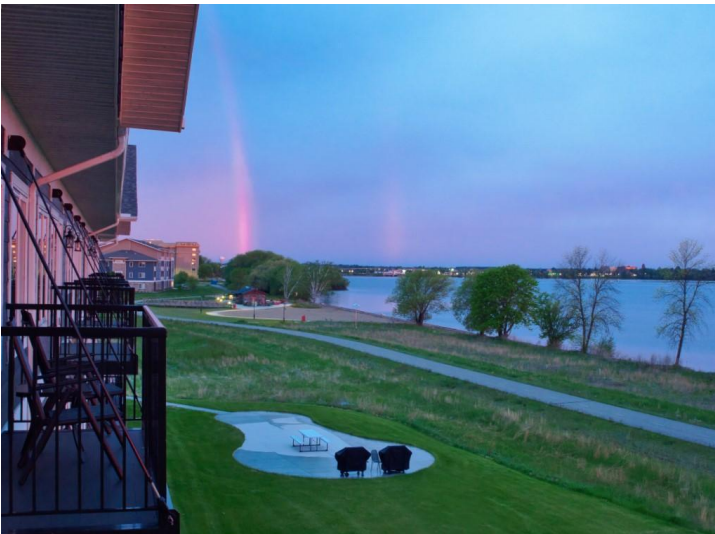
\$499,900
MLS 6505808 Lake Home
715 Lake Shore Drive
Bemidji MN 56601



website: www.AffinityRealEstate.com | email: info@affinityrealestate.com | office: 218-237-3333 | fax: 218-237-3377



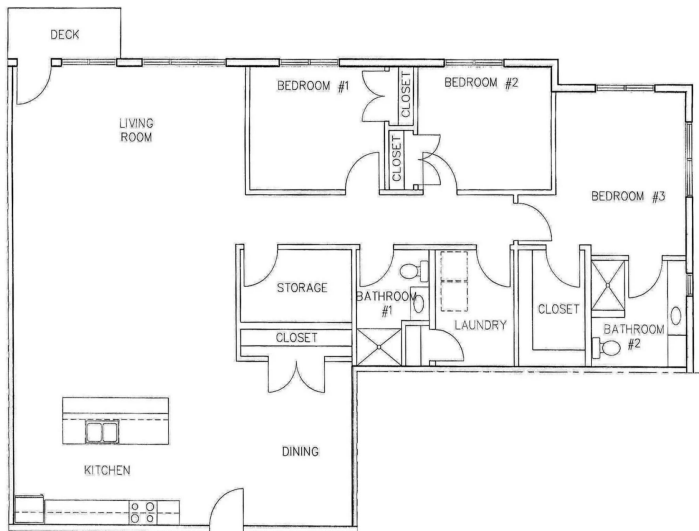
\$499,900
 MLS 6505808 Lake Home
 715 Lake Shore Drive
 Bemidji MN 56601



website: www.AffinityRealEstate.com | email: info@affinityrealestate.com | office: 218-237-3333 | fax: 218-237-3377



\$499,900
 MLS 6505808 Lake Home
 715 Lake Shore Drive
 Bemidji MN 56601



website: www.AffinityRealEstate.com | email: info@affinityrealestate.com | office: 218-237-3333 | fax: 218-237-3377

Affinity
REAL ESTATE INC

\$499,900
MLS 6505808 Lake Home
715 Lake Shore Drive
Bemidji MN 56601



website: www.AffinityRealEstate.com | email: info@affinityrealestate.com | office: 218-237-3333 | fax: 218-237-3377



\$499,900
 MLS 6505808 Lake Home
 715 Lake Shore Drive
 Bemidji MN 56601