



MLS 6506128 Lake Home

**\$439,900**

1,224 sq ft  
3 bedrooms  
2 baths

19271 Grouse Road  
Park Rapids MN 56470

Waterfront: Loon Lake (Lake Emma  
Twp.)

Status: Closed

**Description:**

Walk through the front door and be greeted by the extensive, lakeside glass framing the amazing views of scenic Loon Lake! This 3 bedroom lake home currently has the 3rd being used as an office/den. Fully renovated and in beautiful condition throughout, it has also had a large addition with a picture-perfect owners suite and spacious bath with a large walk-in closet. Over 4 acres of wooded land and 170 feet of wonderful lakeshore, this cozy, warm home will make you fall in love with every aspect of Northern Minnesota living!

**Additional Details:**

Year Built	1947
Lot Acres	4.2
Lot Dimensions	170x451x400x643
Garage Stalls	3
School District	309
Taxes	\$2,224
Taxes with Assessments	\$2,224
Tax Year	2024

**Additional Features:**

**Fuel:** Electric, Propane **Heat:** Forced Air

**Driving Directions:**

From Hwy 34 and 71 in Park Rapids, 2 miles east on Hwy 34 to Co. Road 4, the left (north) on 4 for 3.8 miles to Co. Road 18, then right on 18 and continue for 1.4 miles to Grouse Road. Then left on Grouse Road and follow for about 1.5 miles to 19271. Home on the right side.



Listed By:  
Keller Williams Realty Professionals

Affinity Real Estate Inc. participates in the Regional Multiple Listing Service of Minnesota, Inc Broker Reciprocity (sm) program, allowing us to display other broker's listings on our website. All properties are subject to prior sale, change or withdrawal.



**Call Affinity Real Estate**

**218-237-3333**

**info@affinityrealestate.com**



**Affinity Real Estate - 600 Park Avenue South - Park Rapids MN 56470**





website: [www.AffinityRealEstate.com](http://www.AffinityRealEstate.com) | email: [info@affinityrealestate.com](mailto:info@affinityrealestate.com) | office: 218-237-3333 | fax: 218-237-3377

**Affinity**  
REAL ESTATE INC

**\$439,900**  
MLS 6506128 Lake Home  
19271 Grouse Road  
Park Rapids MN 56470





website: [www.AffinityRealEstate.com](http://www.AffinityRealEstate.com) | email: [info@affinityrealestate.com](mailto:info@affinityrealestate.com) | office: 218-237-3333 | fax: 218-237-3377

**Affinity**  
REAL ESTATE INC

**\$439,900**  
MLS 6506128 Lake Home  
19271 Grouse Road  
Park Rapids MN 56470





website: [www.AffinityRealEstate.com](http://www.AffinityRealEstate.com) | email: [info@affinityrealestate.com](mailto:info@affinityrealestate.com) | office: 218-237-3333 | fax: 218-237-3377

**Affinity**  
REAL ESTATE INC

**\$439,900**  
MLS 6506128 Lake Home  
19271 Grouse Road  
Park Rapids MN 56470





website: [www.AffinityRealEstate.com](http://www.AffinityRealEstate.com) | email: [info@affinityrealestate.com](mailto:info@affinityrealestate.com) | office: 218-237-3333 | fax: 218-237-3377

**Affinity**  
REAL ESTATE INC

**\$439,900**  
MLS 6506128 Lake Home  
19271 Grouse Road  
Park Rapids MN 56470





website: [www.AffinityRealEstate.com](http://www.AffinityRealEstate.com) | email: [info@affinityrealestate.com](mailto:info@affinityrealestate.com) | office: 218-237-3333 | fax: 218-237-3377



**\$439,900**  
 MLS 6506128 Lake Home  
 19271 Grouse Road  
 Park Rapids MN 56470





website: [www.AffinityRealEstate.com](http://www.AffinityRealEstate.com) | email: [info@affinityrealestate.com](mailto:info@affinityrealestate.com) | office: 218-237-3333 | fax: 218-237-3377



**\$439,900**  
 MLS 6506128 Lake Home  
 19271 Grouse Road  
 Park Rapids MN 56470



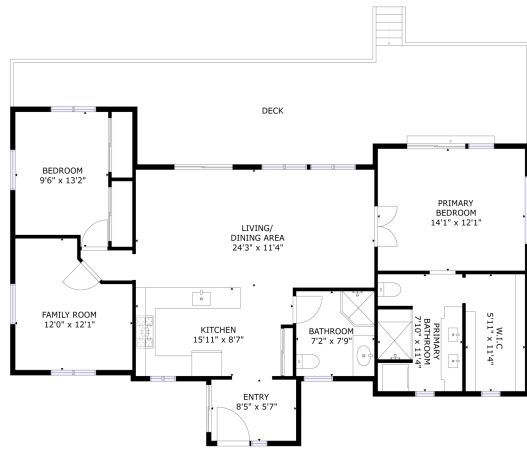


website: [www.AffinityRealEstate.com](http://www.AffinityRealEstate.com) | email: [info@affinityrealestate.com](mailto:info@affinityrealestate.com) | office: 218-237-3333 | fax: 218-237-3377

**Affinity**  
REAL ESTATE INC

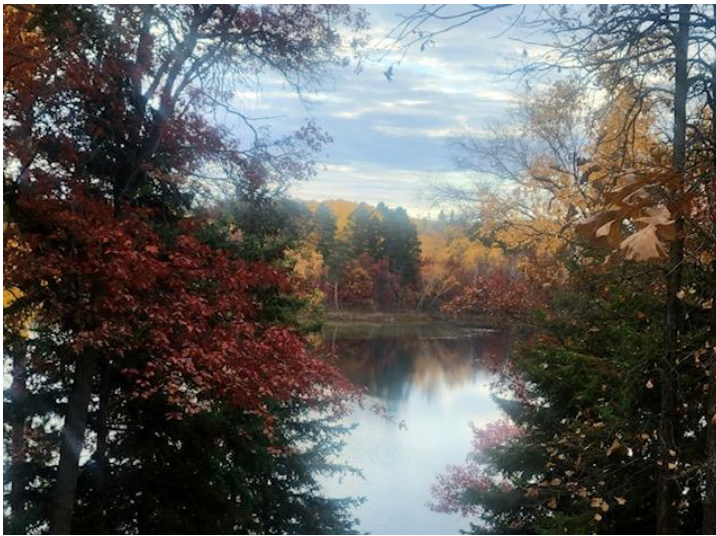
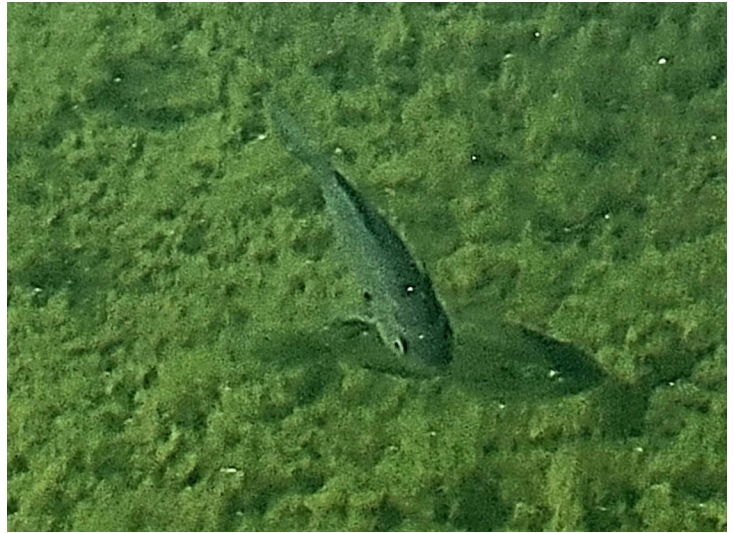
**\$439,900**  
MLS 6506128 Lake Home  
19271 Grouse Road  
Park Rapids MN 56470





FLOOR 1

GROSS INTERNAL AREA  
TOTAL: 1164 sq. ft.  
SIZES AND DIMENSIONS ARE APPROXIMATE. ACTUAL MAY VARY.



website: [www.AffinityRealEstate.com](http://www.AffinityRealEstate.com) | email: [info@affinityrealestate.com](mailto:info@affinityrealestate.com) | office: 218-237-3333 | fax: 218-237-3377



**\$439,900**  
MLS 6506128 Lake Home  
19271 Grouse Road  
Park Rapids MN 56470