



MLS 6506957 Lake Home

**\$497,500**

1,872 sq ft  
3 bedrooms  
2 baths

32887 State 200  
Laporte MN 56461

Waterfront: Kabekona River

Status: Active

**Description:**

3 Bd, 2 ba year-round home on 8+ acres with open concept. Enjoy main level living & 360'of Kabekona River frontage w/direct access to KABEKONA BAY of Leech Lake. The home has many beautiful updates inside and outside. Relax in the insulated sun porch with wood burning fireplace to embrace the sights/sounds of the river. Or sit out on the cedar sun deck and enjoy entertaining with the grilling space & granite top dining bar. End the evening unwinding in your wood burning cedar sauna and a refreshing jump in the river. This property would be a perfect vacation spot or year round home. There is a separate entrance for the upper level if you want to try hosting a short-term rental for extra income. If you desire privacy and nature this home has it all plus more.

(Seller will consider all offers) NOTE: Septic was pumped, and filters cleaned 6/10/24.

**Additional Details:**

Year Built	2013
Lot Acres	8.88
Lot Dimensions	360x920
Garage Stalls	2
School District	306
Taxes	\$2,386
Taxes with Assessments	\$2,386
Tax Year	2023

**Additional Features:**

**Fuel:** Electric, Propane **Heat:** Baseboard, Boiler, Fireplace(s), Radiant Floor

**Driving Directions:**

FROM WALKER: Go west on MN-200/MN-371 for 4.1 miles and turn left onto MN-200. Go 2.1 miles and the property will be on left.  
FROM BEMIDJI: take US Hwy 71 South approximately 12 miles and continuing approximately 6.5 miles MN 200E. Property is on your right.



Listed By:  
Better Homes and Gardens Real Estate First Cho

Affinity Real Estate Inc. participates in the Regional Multiple Listing Service of Minnesota, Inc Broker Reciprocity (sm) program, allowing us to display other broker's listings on our website. All properties are subject to prior sale, change or withdrawal.



**Call Affinity Real Estate**

**218-237-3333**

**info@affinityrealestate.com**



**Affinity Real Estate - 600 Park Avenue South - Park Rapids MN 56470**



website: [www.AffinityRealEstate.com](http://www.AffinityRealEstate.com) | email: [info@affinityrealestate.com](mailto:info@affinityrealestate.com) | office: 218-237-3333 | fax:218-237-3377



**\$497,500**  
MLS 6506957 Lake Home  
32887 State 200  
Laporte MN 56461



website: [www.AffinityRealEstate.com](http://www.AffinityRealEstate.com) | email: [info@affinityrealestate.com](mailto:info@affinityrealestate.com) | office: 218-237-3333 | fax: 218-237-3377

**Affinity**  
REAL ESTATE INC

**\$497,500**  
MLS 6506957 Lake Home  
32887 State 200  
Laporte MN 56461



website: [www.AffinityRealEstate.com](http://www.AffinityRealEstate.com) | email: [info@affinityrealestate.com](mailto:info@affinityrealestate.com) | office: 218-237-3333 | fax: 218-237-3377

**Affinity**  
REAL ESTATE INC

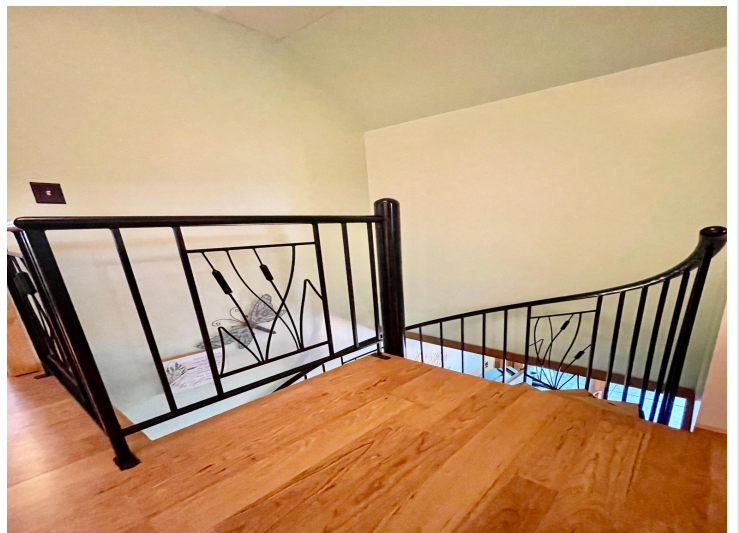
**\$497,500**  
MLS 6506957 Lake Home  
32887 State 200  
Laporte MN 56461



website: [www.AffinityRealEstate.com](http://www.AffinityRealEstate.com) | email: [info@affinityrealestate.com](mailto:info@affinityrealestate.com) | office: 218-237-3333 | fax: 218-237-3377

**Affinity**  
REAL ESTATE INC

**\$497,500**  
MLS 6506957 Lake Home  
32887 State 200  
Laporte MN 56461



website: [www.AffinityRealEstate.com](http://www.AffinityRealEstate.com) | email: [info@affinityrealestate.com](mailto:info@affinityrealestate.com) | office: 218-237-3333 | fax:218-237-3377

**Affinity**  
REAL ESTATE INC

**\$497,500**  
MLS 6506957 Lake Home  
32887 State 200  
Laporte MN 56461



website: [www.AffinityRealEstate.com](http://www.AffinityRealEstate.com) | email: [info@affinityrealestate.com](mailto:info@affinityrealestate.com) | office: 218-237-3333 | fax:218-237-3377

**Affinity**  
REAL ESTATE INC

**\$497,500**  
MLS 6506957 Lake Home  
32887 State 200  
Laporte MN 56461



website: [www.AffinityRealEstate.com](http://www.AffinityRealEstate.com) | email: [info@affinityrealestate.com](mailto:info@affinityrealestate.com) | office: 218-237-3333 | fax: 218-237-3377

**Affinity**  
REAL ESTATE INC

**\$497,500**  
MLS 6506957 Lake Home  
32887 State 200  
Laporte MN 56461





website: [www.AffinityRealEstate.com](http://www.AffinityRealEstate.com) | email: [info@affinityrealestate.com](mailto:info@affinityrealestate.com) | office: 218-237-3333 | fax:218-237-3377

**Affinity**  
REAL ESTATE INC

**\$497,500**  
MLS 6506957 Lake Home  
32887 State 200  
Laporte MN 56461



website: [www.AffinityRealEstate.com](http://www.AffinityRealEstate.com) | email: [info@affinityrealestate.com](mailto:info@affinityrealestate.com) | office: 218-237-3333 | fax:218-237-3377



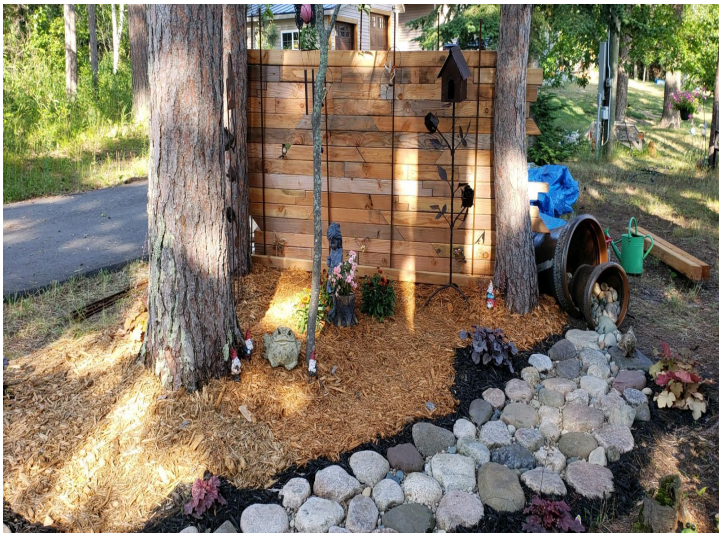
**\$497,500**  
MLS 6506957 Lake Home  
32887 State 200  
Laporte MN 56461



website: [www.AffinityRealEstate.com](http://www.AffinityRealEstate.com) | email: [info@affinityrealestate.com](mailto:info@affinityrealestate.com) | office: 218-237-3333 | fax:218-237-3377

**Affinity**  
REAL ESTATE INC

**\$497,500**  
MLS 6506957 Lake Home  
32887 State 200  
Laporte MN 56461



website: [www.AffinityRealEstate.com](http://www.AffinityRealEstate.com) | email: [info@affinityrealestate.com](mailto:info@affinityrealestate.com) | office: 218-237-3333 | fax: 218-237-3377

**Affinity**  
REAL ESTATE INC

**\$497,500**  
MLS 6506957 Lake Home  
32887 State 200  
Laporte MN 56461



website: [www.AffinityRealEstate.com](http://www.AffinityRealEstate.com) | email: [info@affinityrealestate.com](mailto:info@affinityrealestate.com) | office: 218-237-3333 | fax:218-237-3377

**Affinity**  
REAL ESTATE INC

**\$497,500**  
MLS 6506957 Lake Home  
32887 State 200  
Laporte MN 56461