



MLS 6507367 Residential

**\$525,000**

3,648 sq ft  
4 bedrooms  
3 baths

43056 County 45  
Laporte MN 56461

Status: Active

**Description:**

4 bedroom, 2001 built home with 58+/- wooded acres, attached garage plus detached garage that entails 36' x 36' heated space with air compressor that stays and has separate LP tank and 24' x 24' cold storage garage. Home purchased May 2023 and has been extensively remodeled/updated on both floors: Custom countertops, new faucets, new kitchen appliances, including custom hood vent, vented to the outside, updated gas fireplace surround and mantel, new flooring throughout, new a/c May 2023, new furnace Oct. 2023, etc. etc. Groomed trails, deer stand, firepit. All of this within 20 minutes of Bemidji and Walker on asphalt road.

**Additional Details:**


|                        |                    |
|------------------------|--------------------|
| Year Built             | 2001               |
| Lot Acres              | 58.87              |
| Lot Dimensions         | 660x2570x1320x1320 |
| Garage Stalls          | 6                  |
| School District        | 31                 |
| Taxes                  | \$3,366            |
| Taxes with Assessments | \$3,366            |
| Tax Year               | 2024               |

**Additional Features:**

**Fuel:** Propane **Heat:** Forced Air, Fireplace(s)

**Driving Directions:**

From Bemidji: East on Hwy 2 nine miles to Right (South) on Cty 45 for about 9 miles to house on right.  
From Walker: Hwy 371 N. to MN 200 to right on Cty 45 for 5.7 miles to house on right.

 Listed By:  
Deep Rock Realty, Inc.

Affinity Real Estate Inc. participates in the Regional Multiple Listing Service of Minnesota, Inc Broker Reciprocity (sm) program, allowing us to display other broker's listings on our website. All properties are subject to prior sale, change or withdrawal.



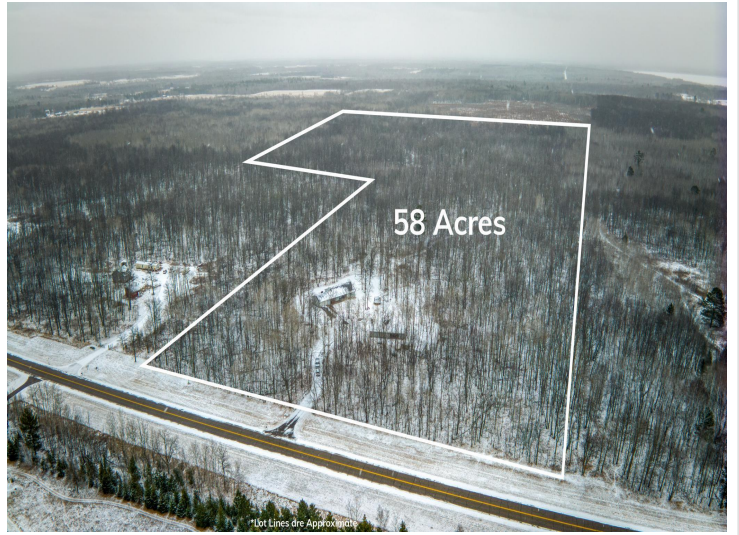
**Call Affinity Real Estate**

**218-237-3333**

**info@affinityrealestate.com**



**Affinity Real Estate - 600 Park Avenue South - Park Rapids MN 56470**



website: [www.AffinityRealEstate.com](http://www.AffinityRealEstate.com) | email: [info@affinityrealestate.com](mailto:info@affinityrealestate.com) | office: 218-237-3333 | fax: 218-237-3377

**Affinity**  
REAL ESTATE INC

**\$525,000**  
MLS 6507367 Residential  
43056 County 45  
Laporte MN 56461



website: [www.AffinityRealEstate.com](http://www.AffinityRealEstate.com) | email: [info@affinityrealestate.com](mailto:info@affinityrealestate.com) | office: 218-237-3333 | fax:218-237-3377



**\$525,000**  
MLS 6507367 Residential  
43056 County 45  
Laporte MN 56461



website: [www.AffinityRealEstate.com](http://www.AffinityRealEstate.com) | email: [info@affinityrealestate.com](mailto:info@affinityrealestate.com) | office: 218-237-3333 | fax:218-237-3377



**\$525,000**  
MLS 6507367 Residential  
43056 County 45  
Laporte MN 56461



website: [www.AffinityRealEstate.com](http://www.AffinityRealEstate.com) | email: [info@affinityrealestate.com](mailto:info@affinityrealestate.com) | office: 218-237-3333 | fax: 218-237-3377

**Affinity**  
REAL ESTATE INC

**\$525,000**  
MLS 6507367 Residential  
43056 County 45  
Laporte MN 56461



website: [www.AffinityRealEstate.com](http://www.AffinityRealEstate.com) | email: [info@affinityrealestate.com](mailto:info@affinityrealestate.com) | office: 218-237-3333 | fax:218-237-3377

**Affinity**  
REAL ESTATE INC

**\$525,000**  
MLS 6507367 Residential  
43056 County 45  
Laporte MN 56461



website: [www.AffinityRealEstate.com](http://www.AffinityRealEstate.com) | email: [info@affinityrealestate.com](mailto:info@affinityrealestate.com) | office: 218-237-3333 | fax:218-237-3377



**\$525,000**  
MLS 6507367 Residential  
43056 County 45  
Laporte MN 56461



website: [www.AffinityRealEstate.com](http://www.AffinityRealEstate.com) | email: [info@affinityrealestate.com](mailto:info@affinityrealestate.com) | office: 218-237-3333 | fax: 218-237-3377

**Affinity**  
REAL ESTATE INC

**\$525,000**  
MLS 6507367 Residential  
43056 County 45  
Laporte MN 56461





website: [www.AffinityRealEstate.com](http://www.AffinityRealEstate.com) | email: [info@affinityrealestate.com](mailto:info@affinityrealestate.com) | office: 218-237-3333 | fax:218-237-3377

**Affinity**  
REAL ESTATE INC

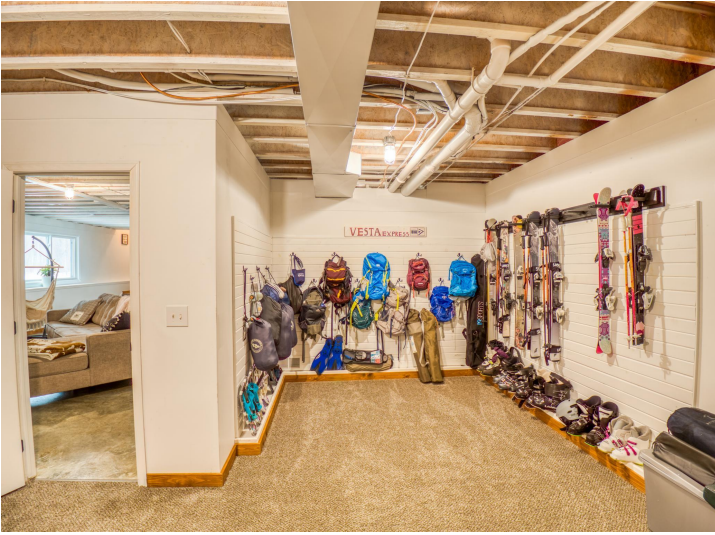
**\$525,000**  
MLS 6507367 Residential  
43056 County 45  
Laporte MN 56461



website: [www.AffinityRealEstate.com](http://www.AffinityRealEstate.com) | email: [info@affinityrealestate.com](mailto:info@affinityrealestate.com) | office: 218-237-3333 | fax:218-237-3377

**Affinity**  
REAL ESTATE INC

**\$525,000**  
MLS 6507367 Residential  
43056 County 45  
Laporte MN 56461



website: [www.AffinityRealEstate.com](http://www.AffinityRealEstate.com) | email: [info@affinityrealestate.com](mailto:info@affinityrealestate.com) | office: 218-237-3333 | fax: 218-237-3377

**Affinity**  
REAL ESTATE INC

**\$525,000**  
MLS 6507367 Residential  
43056 County 45  
Laporte MN 56461



website: [www.AffinityRealEstate.com](http://www.AffinityRealEstate.com) | email: [info@affinityrealestate.com](mailto:info@affinityrealestate.com) | office: 218-237-3333 | fax:218-237-3377

**Affinity**  
REAL ESTATE INC

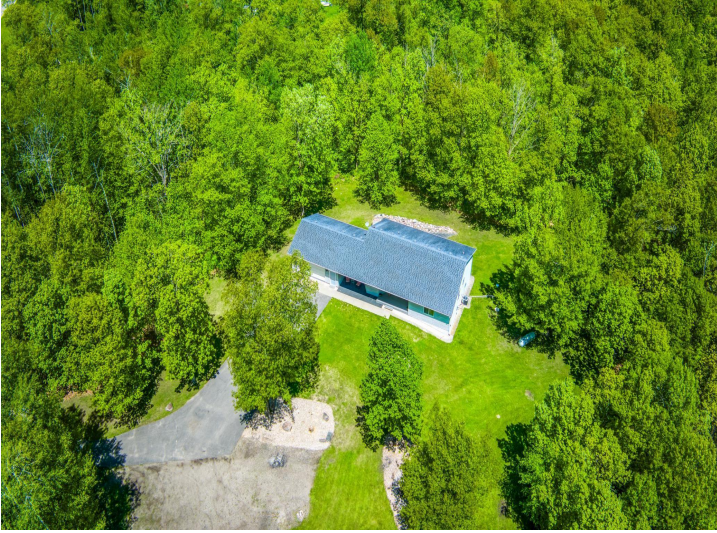
**\$525,000**  
MLS 6507367 Residential  
43056 County 45  
Laporte MN 56461



website: [www.AffinityRealEstate.com](http://www.AffinityRealEstate.com) | email: [info@affinityrealestate.com](mailto:info@affinityrealestate.com) | office: 218-237-3333 | fax:218-237-3377



**\$525,000**  
MLS 6507367 Residential  
43056 County 45  
Laporte MN 56461



website: [www.AffinityRealEstate.com](http://www.AffinityRealEstate.com) | email: [info@affinityrealestate.com](mailto:info@affinityrealestate.com) | office: 218-237-3333 | fax:218-237-3377



**\$525,000**  
MLS 6507367 Residential  
43056 County 45  
Laporte MN 56461