



MLS 6507799 Lake Land

\$209,900

Description:

Escape to your own piece of waterfront heaven with 156 feet of lakeshore located in Shingobee Bay on shore of Miller Bay with direct access to the pristine waters of Leech Lake, ideal for fishing, boating, kayaking & water sports. Situated on a sprawling 5.29 acres of land, this parcel offers an opportunity to create your dream cabin retreat, permanent residence, or the perfect spot for your RV getaway & less than 5 miles from Walker for all your shopping, restaurants, & entertainment. Embark on adventures right from your doorstep with direct access to the famed Paul Bunyan trails, perfect for hiking, biking, snowmobiling, & exploring the great outdoors. The dock is already in the water & shared staircase provides hassle-free access to the water & endless opportunities for relaxation & recreation. Whether you're seeking a peaceful retreat or an investment opportunity, this Leech Lake property offers limitless potential. Don't miss out on the chance to own a slice of lakeside paradise!

Additional Details:

Lot Acres	5.29
Lot Dimensions	irregular
School District	113
Taxes	\$466
Taxes with Assessments	\$466
Tax Year	2024

Additional Features:

Driving Directions:

From Walker go East on Hwy 371/200 for 4 miles, turn right onto Christmas Point Rd NW for .5 mile, 6761 is on the right.



Listed By:
Bill Hansen Realty/Walker

Affinity Real Estate Inc. participates in the Regional Multiple Listing Service of Minnesota, Inc Broker Reciprocity (sm) program, allowing us to display other broker's listings on our website. All properties are subject to prior sale, change or withdrawal.



Call Affinity Real Estate

218-237-3333

info@affinityrealestate.com



Affinity Real Estate - 600 Park Avenue South - Park Rapids MN 56470



website: www.AffinityRealEstate.com | email: info@affinityrealestate.com | office: 218-237-3333 | fax: 218-237-3377



\$209,900
MLS 6507799 Lake Land
6761 Christmas Point Road
Walker MN 56484



website: www.AffinityRealEstate.com | email: info@affinityrealestate.com | office: 218-237-3333 | fax: 218-237-3377



\$209,900

MLS 6507799 Lake Land
6761 Christmas Point Road
Walker MN 56484

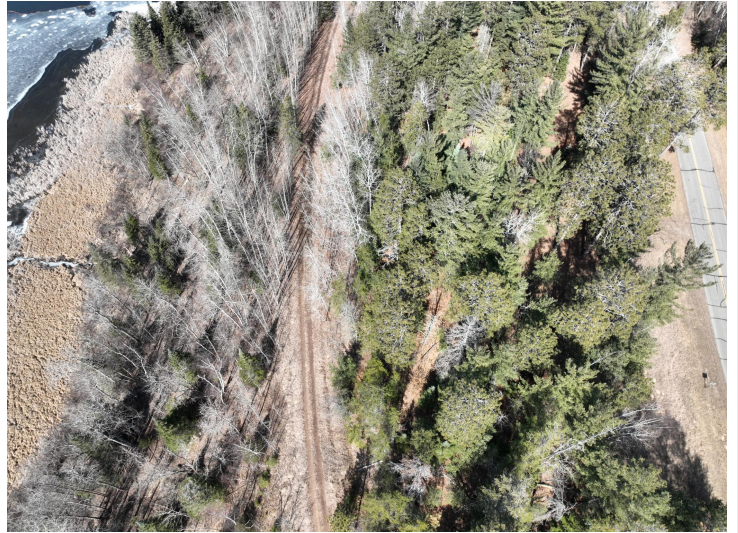


website: www.AffinityRealEstate.com | email: info@affinityrealestate.com | office: 218-237-3333 | fax: 218-237-3377

Affinity
REAL ESTATE INC

\$209,900

MLS 6507799 Lake Land
6761 Christmas Point Road
Walker MN 56484



website: www.AffinityRealEstate.com | email: info@affinityrealestate.com | office: 218-237-3333 | fax: 218-237-3377



\$209,900

MLS 6507799 Lake Land
6761 Christmas Point Road
Walker MN 56484



website: www.AffinityRealEstate.com | email: info@affinityrealestate.com | office: 218-237-3333 | fax:218-237-3377



\$209,900

MLS 6507799 Lake Land
6761 Christmas Point Road
Walker MN 56484