



MLS 6507982 Residential

\$1

1,920 sq ft
4 bedrooms
3 baths

16288 County Highway 29
Frazee MN 56544

Status: Pending

Description:

Bid your price! Online only auction opening Friday, April 19th and closing Tuesday, April 23rd at 12pm. Rare Frazee/Detroit Lakes property with 90+/- acres of land and 2 homesteads to be offered in 3 parcels. Lot 1-Parcel B on the survey includes 52.71 acres of mixed wooded land. A beautiful 1.25 story homestead with full basement, main level, and loft all needing to be finished. Also included, attached garage and 30x40 detached shed. Lot 2 -Parcel A on the survey includes 35.32 acres of tillable and wooded land great for building, hunting, or farming. Lot 3 -Parcel C on the survey includes 2.78 acres of mostly open land with a 3 bed, 2 bath, mobile home and 40x60 cement slab for a shop/garage. Only 5.5 miles from Frazee and 9 miles from Detroit Lakes. Awesome location for your next home or hobby farm. This is an estate property and sells as-is. 2% buyer's premium does apply. More details on this property are available.

Additional Details:

Year Built	1983
Lot Acres	90.81
Lot Dimensions	90.81 acres
Garage Stalls	2
School District	23
Taxes	\$3,358
Taxes with Assessments	\$3,358
Tax Year	2023

Additional Features:

Fuel: Electric, Propane, Wood **Heat:** Boiler, Forced Air, Fireplace(s), Hot Water, Outdoor Boiler, Wood Stove

Driving Directions:

From Frazee head north on Co Hwy 29 for 5.5 miles to the property on the left side. From Detroit Lakes head east on State Hwy 34 for 7.5 miles then turn right and head north on Co Hwy 29 for 2 miles.



Listed By:
Counselor Realty of Detroit Lakes

Affinity Real Estate Inc. participates in the Regional Multiple Listing Service of Minnesota, Inc Broker Reciprocity (sm) program, allowing us to display other broker's listings on our website. All properties are subject to prior sale, change or withdrawal.



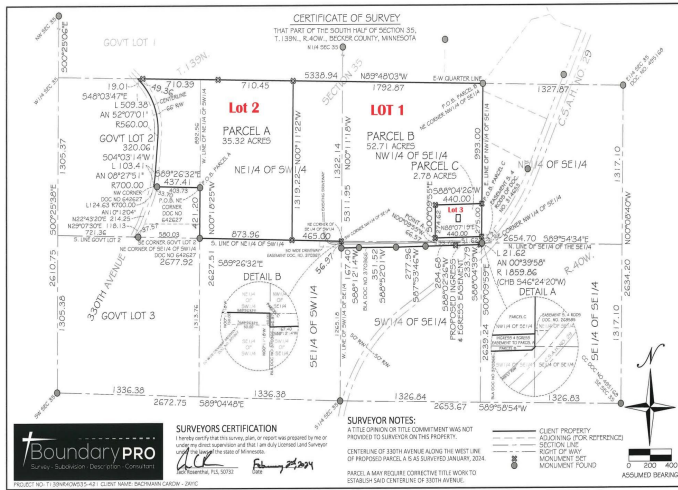
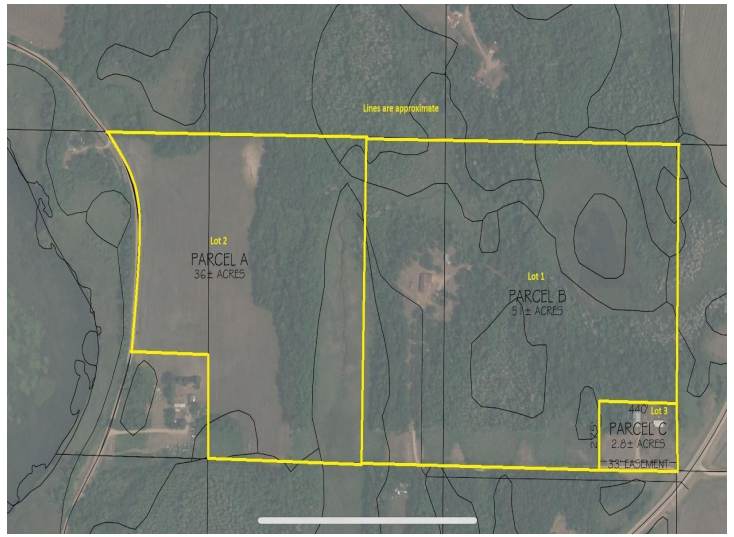
Call Affinity Real Estate

218-237-3333

info@affinityrealestate.com



Affinity Real Estate - 600 Park Avenue South - Park Rapids MN 56470



website: www.AffinityRealEstate.com | email: info@affinityrealestate.com | office: 218-237-3333 | fax: 218-237-3377

Affinity
REAL ESTATE INC

\$1
MLS 6507982 Residential
16288 County Highway 29
Frazee MN 56544



website: www.AffinityRealEstate.com | email: info@affinityrealestate.com | office: 218-237-3333 | fax: 218-237-3377



\$1
MLS 6507982 Residential
16288 County Highway 29
Frazee MN 56544



website: www.AffinityRealEstate.com | email: info@affinityrealestate.com | office: 218-237-3333 | fax: 218-237-3377



\$1
 MLS 6507982 Residential
 16288 County Highway 29
 Frazee MN 56544



website: www.AffinityRealEstate.com | email: info@affinityrealestate.com | office: 218-237-3333 | fax: 218-237-3377



\$1
 MLS 6507982 Residential
 16288 County Highway 29
 Frazee MN 56544



website: www.AffinityRealEstate.com | email: info@affinityrealestate.com | office: 218-237-3333 | fax: 218-237-3377



\$1
 MLS 6507982 Residential
 16288 County Highway 29
 Frazee MN 56544



website: www.AffinityRealEstate.com | email: info@affinityrealestate.com | office: 218-237-3333 | fax: 218-237-3377



\$1
MLS 6507982 Residential
16288 County Highway 29
Frazee MN 56544



website: www.AffinityRealEstate.com | email: info@affinityrealestate.com | office: 218-237-3333 | fax: 218-237-3377



\$1
 MLS 6507982 Residential
 16288 County Highway 29
 Frazee MN 56544



website: www.AffinityRealEstate.com | email: info@affinityrealestate.com | office: 218-237-3333 | fax: 218-237-3377

Affinity
REAL ESTATE INC

\$1
MLS 6507982 Residential
16288 County Highway 29
Frazee MN 56544



website: www.AffinityRealEstate.com | email: info@affinityrealestate.com | office: 218-237-3333 | fax: 218-237-3377



\$1
MLS 6507982 Residential
16288 County Highway 29
Frazee MN 56544



website: www.AffinityRealEstate.com | email: info@affinityrealestate.com | office: 218-237-3333 | fax:218-237-3377



\$1
MLS 6507982 Residential
16288 County Highway 29
Frazee MN 56544