



MLS 6508220 Land

**\$74,900**

2.5 Acres  
Subdivided

xxx Stewarts Bay Drive  
Pequot Lakes MN 56472

Status: Active

**Description:**

Prime location near Pelican Lake and the Stewarts Bay Access located in Pelican Lake Township. This 2.5-acre lot Among the Pines is ready for you to build your dream home, your custom pole barn or pole barn with living quarters. So close to the access to Pelican Lake through Stewarts Bay. Beautiful, wooded lots. Tract D is being offered in this listing. Located in Pelican Lake Township.

**Additional Details:**

Lot Acres	2.5
Lot Dimensions	494x214x555x204
School District	186
Taxes	\$214
Taxes with Assessments	\$214
Tax Year	2024

**Additional Features:**

**Driving Directions:**

From the roundabout at Cty Rd. 3 & Cty Rd. 11 go west approximately 1.5 miles to Stewarts Bay Drive. Turn south or left. Property on right. Sign is on property.



Listed By:  
Weichert REALTORS Tower Properties

Affinity Real Estate Inc. participates in the Regional Multiple Listing Service of Minnesota, Inc Broker Reciprocity (sm) program, allowing us to display other broker's listings on our website. All properties are subject to prior sale, change or withdrawal.



**Call Affinity Real Estate**

**218-237-3333**

**info@affinityrealestate.com**



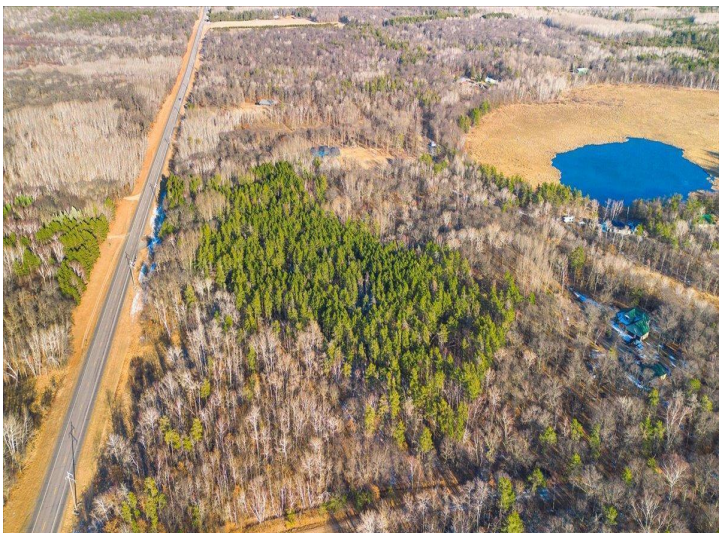
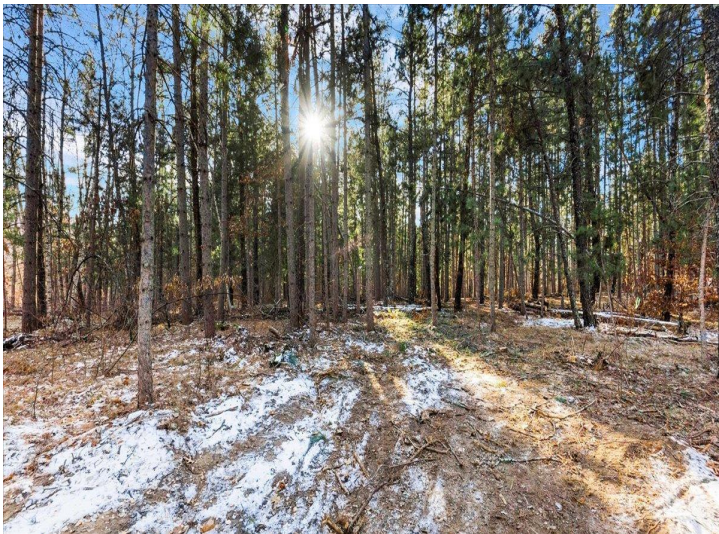
**Affinity Real Estate - 600 Park Avenue South - Park Rapids MN 56470**



website: [www.AffinityRealEstate.com](http://www.AffinityRealEstate.com) | email: [info@affinityrealestate.com](mailto:info@affinityrealestate.com) | office: 218-237-3333 | fax:218-237-3377



**\$74,900**  
MLS 6508220 Land  
xxx Stewarts Bay Drive  
Pequot Lakes MN 56472



website: [www.AffinityRealEstate.com](http://www.AffinityRealEstate.com) | email: [info@affinityrealestate.com](mailto:info@affinityrealestate.com) | office: 218-237-3333 | fax:218-237-3377



**\$74,900**  
MLS 6508220 Land  
xxx Stewarts Bay Drive  
Pequot Lakes MN 56472



website: [www.AffinityRealEstate.com](http://www.AffinityRealEstate.com) | email: [info@affinityrealestate.com](mailto:info@affinityrealestate.com) | office: 218-237-3333 | fax:218-237-3377



**\$74,900**  
MLS 6508220 Land  
xxx Stewarts Bay Drive  
Pequot Lakes MN 56472



website: [www.AffinityRealEstate.com](http://www.AffinityRealEstate.com) | email: [info@affinityrealestate.com](mailto:info@affinityrealestate.com) | office: 218-237-3333 | fax:218-237-3377



**\$74,900**  
MLS 6508220 Land  
xxx Stewarts Bay Drive  
Pequot Lakes MN 56472