



MLS 6508661 Residential

**\$169,500**

1,280 sq ft  
2 bedrooms  
2 baths

25756 410th Street  
Laporte MN 56461

Status: Active

**Description:**

5 beautiful acres in Guthrie township featuring woods, open area and plenty of privacy. This 2 bed 2 bath 1280 square feet home comes with many recent updates including flooring, paint, kitchen cabinets, and a Brand new roof! Perhaps the best feature of this property are the 5 RV hook-ups (electric and sewer) in the back of the lot with income earning potential or for endless other opportunities like hosting a family reunion, graduation party, or wedding. Don't miss this rare opportunity in the heart of Hubbard County

**Additional Details:**

Year Built	1997
Lot Acres	5.3
Lot Dimensions	320x650
School District	31
Taxes	\$500
Taxes with Assessments	\$500
Tax Year	2023

**Additional Features:**

**Fuel:** Propane **Heat:** Forced Air

**Driving Directions:**

From Laporte, MN head north on MN-200 for 2.8 miles turn right onto Co Hwy 36 for 2.5 miles turn left onto 410th street for .7 miles property on right.



Listed By:  
Tru North Realty

Affinity Real Estate Inc. participates in the Regional Multiple Listing Service of Minnesota, Inc Broker Reciprocity (sm) program, allowing us to display other broker's listings on our website. All properties are subject to prior sale, change or withdrawal.



**Call Affinity Real Estate**

**218-237-3333**

**info@affinityrealestate.com**



**Affinity Real Estate - 600 Park Avenue South - Park Rapids MN 56470**





website: [www.AffinityRealEstate.com](http://www.AffinityRealEstate.com) | email: [info@affinityrealestate.com](mailto:info@affinityrealestate.com) | office: 218-237-3333 | fax: 218-237-3377



**\$169,500**  
 MLS 6508661 Residential  
 25756 410th Street  
 Laporte MN 56461

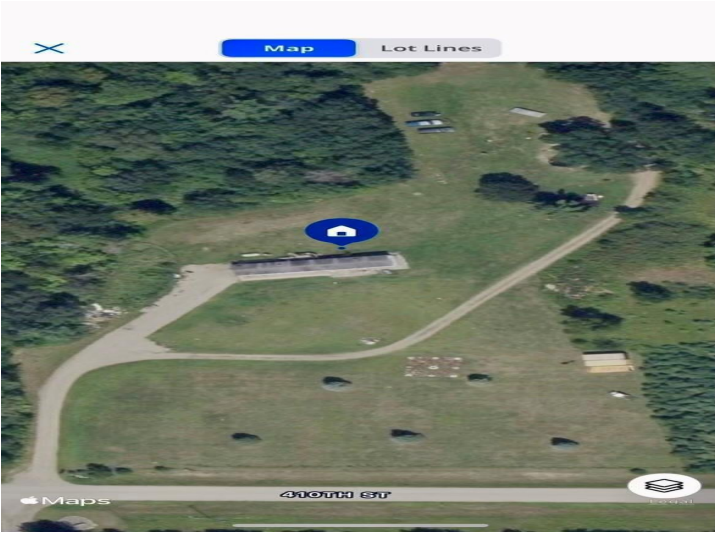




website: [www.AffinityRealEstate.com](http://www.AffinityRealEstate.com) | email: [info@affinityrealestate.com](mailto:info@affinityrealestate.com) | office: 218-237-3333 | fax: 218-237-3377

**Affinity**  
REAL ESTATE INC

**\$169,500**  
MLS 6508661 Residential  
25756 410th Street  
Laporte MN 56461



website: [www.AffinityRealEstate.com](http://www.AffinityRealEstate.com) | email: [info@affinityrealestate.com](mailto:info@affinityrealestate.com) | office: 218-237-3333 | fax: 218-237-3377



**\$169,500**  
MLS 6508661 Residential  
25756 410th Street  
Laporte MN 56461