



MLS 6508813 Land

**\$29,900**

10 Acres  
Raw Land

TBD 240th Street  
Shevlin MN 56676

Status: Pending

**Description:**

Economically priced 10 acres in the heart of the Northwoods located north of Itasca Park off a township gravel road! Bear Creek runs through the property and the beavers have dammed it up creating a wildlife pond. It appears that you could cross the creek with a bridge or culvert on the east end of the property. This would make a really neat get-away with 100's of acres of public land at your doorstep along with miles of trails for wheeling!

**Additional Details:**

Lot Acres	10
Lot Dimensions	660x660
School District	162
Taxes	\$92
Taxes with Assessments	\$92
Tax Year	2024

**Additional Features:**

**Driving Directions:**

From Hwy 2 east of Shevlin, south on CR#2 for 12.5 miles, right on 240th St 1.25 miles. Property on the right.



Listed By:  
Realty Experts, LLC

Affinity Real Estate Inc. participates in the Regional Multiple Listing Service of Minnesota, Inc Broker Reciprocity (sm) program, allowing us to display other broker's listings on our website. All properties are subject to prior sale, change or withdrawal.



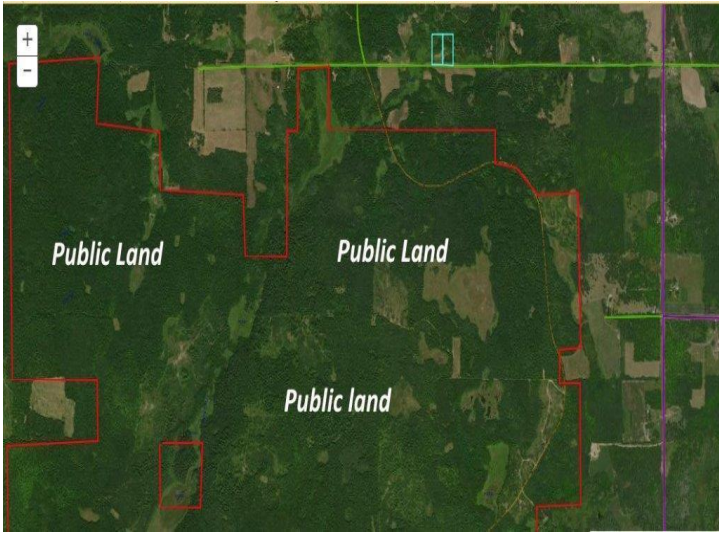
Call Affinity Real Estate

**218-237-3333**

[info@affinityrealestate.com](mailto:info@affinityrealestate.com)



Affinity Real Estate - 600 Park Avenue South - Park Rapids MN 56470



website: [www.AffinityRealEstate.com](http://www.AffinityRealEstate.com) | email: [info@affinityrealestate.com](mailto:info@affinityrealestate.com) | office: 218-237-3333 | fax:218-237-3377



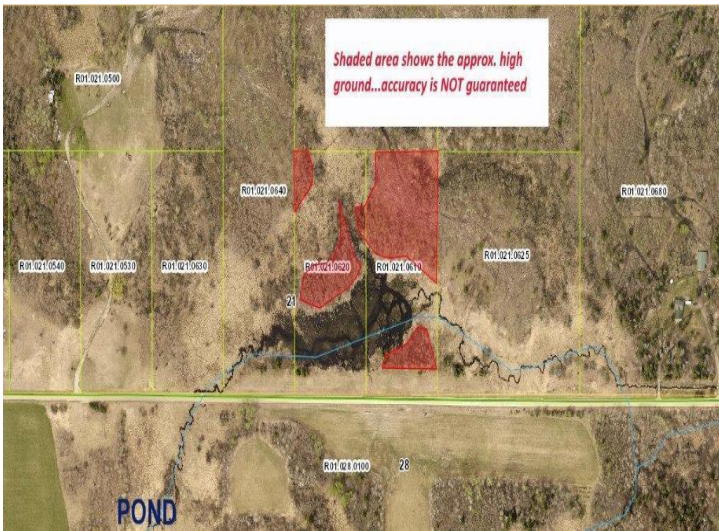
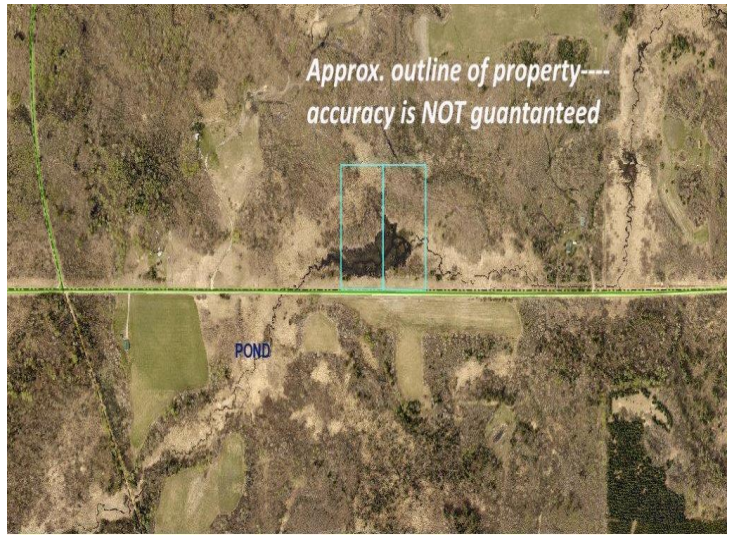
**\$29,900**  
MLS 6508813 Land  
TBD 240th Street  
Shevlin MN 56676



website: [www.AffinityRealEstate.com](http://www.AffinityRealEstate.com) | email: [info@affinityrealestate.com](mailto:info@affinityrealestate.com) | office: 218-237-3333 | fax:218-237-3377



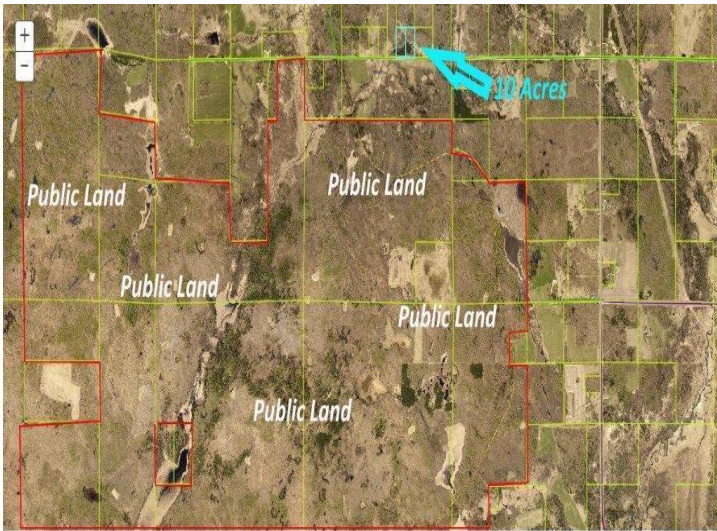
**\$29,900**  
MLS 6508813 Land  
TBD 240th Street  
Shevlin MN 56676



website: [www.AffinityRealEstate.com](http://www.AffinityRealEstate.com) | email: [info@affinityrealestate.com](mailto:info@affinityrealestate.com) | office: 218-237-3333 | fax:218-237-3377



**\$29,900**  
 MLS 6508813 Land  
 TBD 240th Street  
 Shevlin MN 56676



website: [www.AffinityRealEstate.com](http://www.AffinityRealEstate.com) | email: [info@affinityrealestate.com](mailto:info@affinityrealestate.com) | office: 218-237-3333 | fax:218-237-3377



**\$29,900**  
MLS 6508813 Land  
TBD 240th Street  
Shevlin MN 56676