



MLS 6509226 Land

**\$399,995**

80 Acres  
Finished Lot(s)

24800 380th Street  
Menahga MN 56464

Status: Active

#### Description:

Welcome to Huntersville Landing. Truly a one in a million, landmark offering that defines all things recreational. A signature acreage with nearly half a mile of maintenance free rail fencing, gated entry, year-round usable cabin (2017), 40x46 airplane hangar, 30x80 pole building, compliant septic, drilled well, underground electric, trails, food plots and easy black top access. More notably, this property boasts its very own airfield. Includes both a primary N/S and a secondary crosswind landing strip which can also double as a long-distance shooting range. Bonus; It is completely bordered and surrounded by 1000's of acres of state forest. Whether you're a pilot, hunter, an equestrian, ATV/Snowmobile enthusiast, nature lover or just enjoy the outdoors then look no further. This second-to-none opportunity will not disappoint.

#### Additional Details:

Lot Acres	80
Lot Dimensions	1320 x 2640
School District	821
Taxes	\$1,668
Taxes with Assessments	\$1,748
Tax Year	2024

#### Additional Features:

#### Driving Directions:

From the Huntersville Outpost: Go approximately 2 miles east on 380th St. to property on left.



Listed By:  
Affinity Real Estate Inc.

Affinity Real Estate Inc. participates in the Regional Multiple Listing Service of Minnesota, Inc Broker Reciprocity (sm) program, allowing us to display other broker's listings on our website. All properties are subject to prior sale, change or withdrawal.



Call Affinity Real Estate

**218-237-3333**

[info@affinityrealestate.com](mailto:info@affinityrealestate.com)



Affinity Real Estate - 600 Park Avenue South - Park Rapids MN 56470





website: [www.AffinityRealEstate.com](http://www.AffinityRealEstate.com) | email: [info@affinityrealestate.com](mailto:info@affinityrealestate.com) | office: 218-237-3333 | fax: 218-237-3377

**Affinity**  
REAL ESTATE INC

**\$399,995**

MLS 6509226 Land  
24800 380th Street  
Menahga MN 56464





website: [www.AffinityRealEstate.com](http://www.AffinityRealEstate.com) | email: [info@affinityrealestate.com](mailto:info@affinityrealestate.com) | office: 218-237-3333 | fax: 218-237-3377



**\$399,995**

MLS 6509226 Land  
24800 380th Street  
Menahga MN 56464





website: [www.AffinityRealEstate.com](http://www.AffinityRealEstate.com) | email: [info@affinityrealestate.com](mailto:info@affinityrealestate.com) | office: 218-237-3333 | fax: 218-237-3377



**\$399,995**

MLS 6509226 Land  
24800 380th Street  
Menahga MN 56464





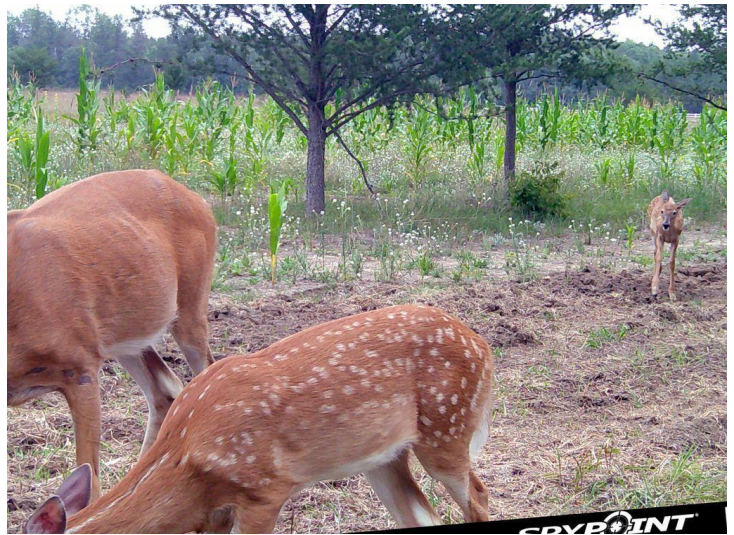
website: [www.AffinityRealEstate.com](http://www.AffinityRealEstate.com) | email: [info@affinityrealestate.com](mailto:info@affinityrealestate.com) | office: 218-237-3333 | fax: 218-237-3377

**Affinity**  
REAL ESTATE INC

**\$399,995**

MLS 6509226 Land  
24800 380th Street  
Menahga MN 56464





website: [www.AffinityRealEstate.com](http://www.AffinityRealEstate.com) | email: [info@affinityrealestate.com](mailto:info@affinityrealestate.com) | office: 218-237-3333 | fax: 218-237-3377



**\$399,995**

MLS 6509226 Land  
24800 380th Street  
Menahga MN 56464





website: [www.AffinityRealEstate.com](http://www.AffinityRealEstate.com) | email: [info@affinityrealestate.com](mailto:info@affinityrealestate.com) | office: 218-237-3333 | fax: 218-237-3377

**Affinity**  
REAL ESTATE INC

**\$399,995**

MLS 6509226 Land  
24800 380th Street  
Menahga MN 56464





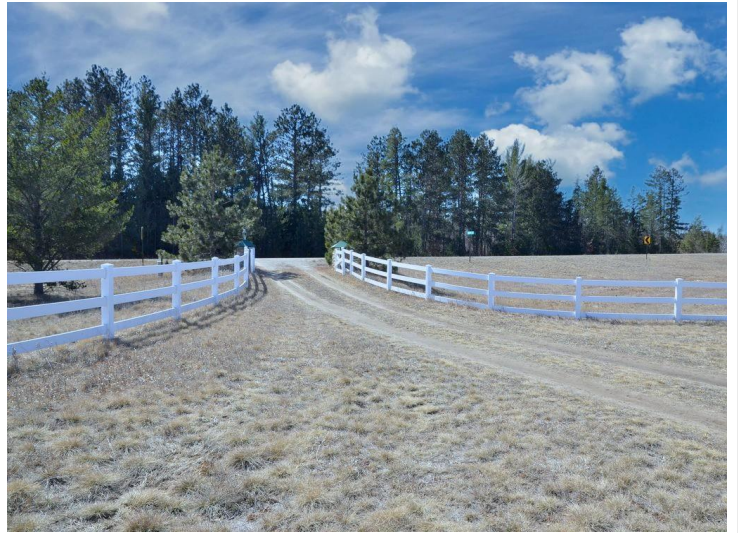
website: [www.AffinityRealEstate.com](http://www.AffinityRealEstate.com) | email: [info@affinityrealestate.com](mailto:info@affinityrealestate.com) | office: 218-237-3333 | fax: 218-237-3377



**\$399,995**

MLS 6509226 Land  
24800 380th Street  
Menahga MN 56464





website: [www.AffinityRealEstate.com](http://www.AffinityRealEstate.com) | email: [info@affinityrealestate.com](mailto:info@affinityrealestate.com) | office: 218-237-3333 | fax: 218-237-3377



**\$399,995**

MLS 6509226 Land  
24800 380th Street  
Menahga MN 56464