



WHITE EARTH LAKE



MLS 6510033 Lake Land

\$324,900

Description:

2.3 ACRES AND 150 ft. SHORELINE ON WHITE EARTH LAKE. This is a RARE find as properties on White Earth Lake are hard to come by. Known as one of Minnesota's clearest lakes with exceptional walleye fishing, boating, and swimming. 150 ft. of incredible sandy, hard bottom shoreline and minutes away from the coveted Lake Crest Resort.

Additional Details:

Lot Acres	2.3
Lot Dimensions	Tbd
School District	435
Taxes	\$1,948
Taxes with Assessments	\$1,948
Tax Year	2023

Additional Features:

Driving Directions:

Property is just before Cedar Crest Resort off of Co Rd 112



Listed By:
RE/MAX LAKES REGION

Affinity Real Estate Inc. participates in the Regional Multiple Listing Service of Minnesota, Inc Broker Reciprocity (sm) program, allowing us to display other broker's listings on our website. All properties are subject to prior sale, change or withdrawal.



Call Affinity Real Estate

218-237-3333

info@affinityrealestate.com



Affinity Real Estate - 600 Park Avenue South - Park Rapids MN 56470



WHITE EARTH LAKE

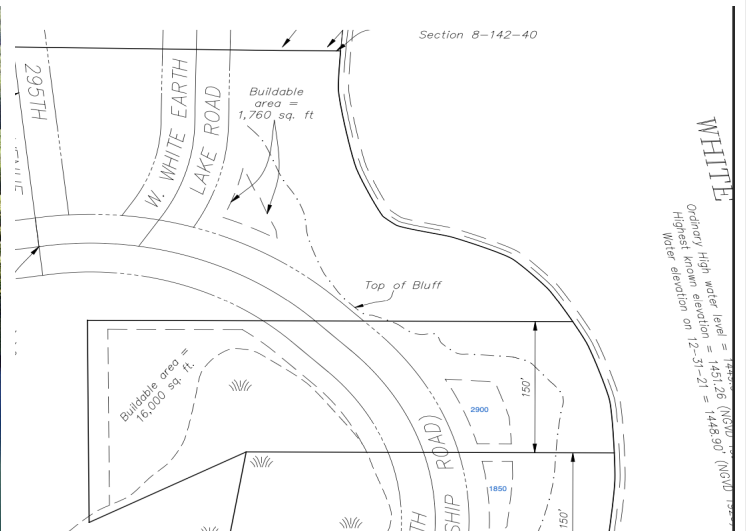


website: www.AffinityRealEstate.com | email: info@affinityrealestate.com | office: 218-237-3333 | fax: 218-237-3377



\$324,900

MLS 6510033 Lake Land
TBD County Road 112
Waubun MN 56589



website: www.AffinityRealEstate.com | email: info@affinityrealestate.com | office: 218-237-3333 | fax: 218-237-3377

Affinity
REAL ESTATE INC

\$324,900
MLS 6510033 Lake Land
TBD County Road 112
Waubun MN 56589