



MLS 6511799 Residential

**\$340,000**

2,123 sq ft  
4 bedrooms  
3 baths

10949 County 32  
Motley MN 56466

Status: Pending

#### Description:

Welcome to your serene countryside retreat nestled on spacious grounds, this charming property offers the perfect blend of comfort and tranquility. Step inside to discover a cozy interior featuring 4 bedrooms and 3 bathrooms, ideal for family living or weekend getaways. The well-appointed kitchen boasts of stainless-steel appliances and ample storage, while the inviting living area is perfect for relaxation or entertaining guests. This home also boasts of new HVAC system. Outside, enjoy over 9 acres of outdoor space, perfect for activities or simply soaking in the scenic views. With its peaceful location and comfortable amenities, this property presents an opportunity to embrace the beauty of rural living. Don't miss out on making this your own private haven in Motley, MN.

#### Additional Details:

Year Built	1975
Lot Acres	9.36
Lot Dimensions	595x883x306x930
Garage Stalls	3
School District	2170
Taxes	\$2,196
Taxes with Assessments	\$1,814
Tax Year	2023

#### Additional Features:

**Basement:** Partially Finished, Walkout **Fuel:** Natural Gas **Garage:** 3 **Heat:** Forced Air **Sewer:** Private Sewer **Water:** Well **Air Conditioning:** Central Air

#### Driving Directions:

From County Rd 1 SW turn right onto 112th St SW, left onto MN - 64S, right onto 120th St SW, right onto County 32 SW, property on left



Listed By:  
Keller Williams Classic Rlty NW

Affinity Real Estate Inc. participates in the Regional Multiple Listing Service of Minnesota, Inc Broker Reciprocity (sm) program, allowing us to display other broker's listings on our website. All properties are subject to prior sale, change or withdrawal.



Call Affinity Real Estate

**218-237-3333**

[info@affinityrealestate.com](mailto:info@affinityrealestate.com)



Affinity Real Estate - 600 Park Avenue South - Park Rapids MN 56470





website: [www.AffinityRealEstate.com](http://www.AffinityRealEstate.com) | email: [info@affinityrealestate.com](mailto:info@affinityrealestate.com) | office: 218-237-3333 | fax: 218-237-3377

**Affinity**  
REAL ESTATE INC

**\$340,000**  
MLS 6511799 Residential  
10949 County 32  
Motley MN 56466





website: [www.AffinityRealEstate.com](http://www.AffinityRealEstate.com) | email: [info@affinityrealestate.com](mailto:info@affinityrealestate.com) | office: 218-237-3333 | fax: 218-237-3377



**\$340,000**  
 MLS 6511799 Residential  
 10949 County 32  
 Motley MN 56466





website: [www.AffinityRealEstate.com](http://www.AffinityRealEstate.com) | email: [info@affinityrealestate.com](mailto:info@affinityrealestate.com) | office: 218-237-3333 | fax: 218-237-3377

**Affinity**  
REAL ESTATE INC

**\$340,000**  
MLS 6511799 Residential  
10949 County 32  
Motley MN 56466





website: [www.AffinityRealEstate.com](http://www.AffinityRealEstate.com) | email: [info@affinityrealestate.com](mailto:info@affinityrealestate.com) | office: 218-237-3333 | fax: 218-237-3377

**Affinity**  
REAL ESTATE INC

**\$340,000**  
MLS 6511799 Residential  
10949 County 32  
Motley MN 56466



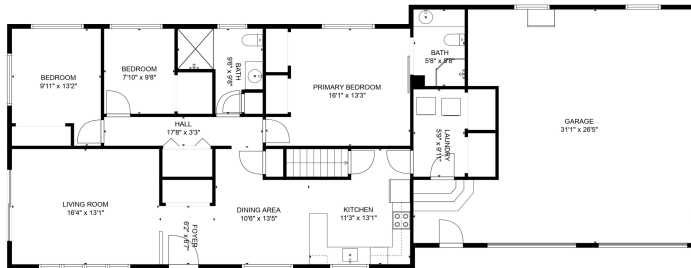


website: [www.AffinityRealEstate.com](http://www.AffinityRealEstate.com) | email: [info@affinityrealestate.com](mailto:info@affinityrealestate.com) | office: 218-237-3333 | fax: 218-237-3377

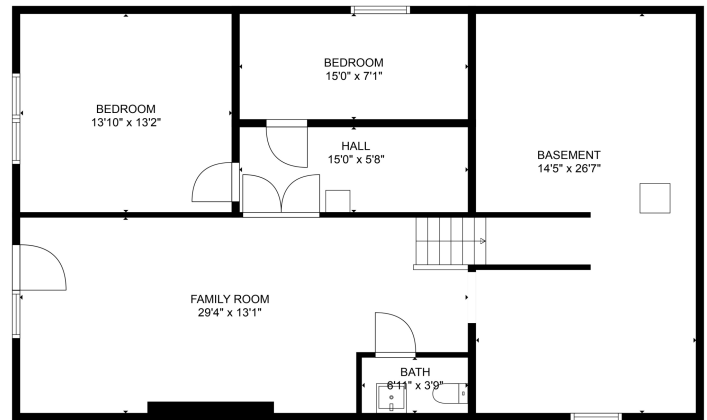


**\$340,000**  
 MLS 6511799 Residential  
 10949 County 32  
 Motley MN 56466

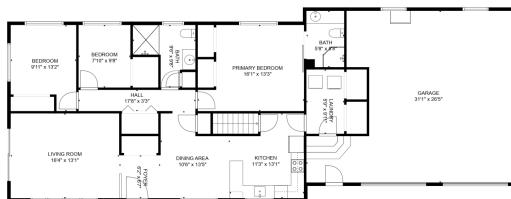




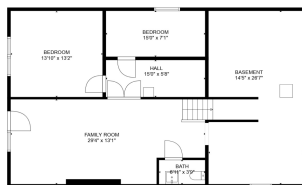
**TOTAL: 3123 sq. ft.**  
Below Ground: 797 sq. ft. FLOOR 2: 3,326 sq. ft.  
EXCLUDED AREAS: BASEMENT: 381 sq. ft. GARAGE: 668 sq. ft.  
SIZES AND DIMENSIONS ARE APPROXIMATE, ACTUAL MAY VARY.



**TOTAL: 3123 sq. ft.**  
Below Ground: 797 sq. ft. FLOOR 2: 3,326 sq. ft.  
EXCLUDED AREAS: BASEMENT: 381 sq. ft. GARAGE: 668 sq. ft.  
SIZES AND DIMENSIONS ARE APPROXIMATE, ACTUAL MAY VARY.



FLOOR 2



FLOOR 1

**TOTAL: 3123 sq. ft.**  
Below Ground: 797 sq. ft. FLOOR 2: 3,326 sq. ft.  
EXCLUDED AREAS: BASEMENT: 381 sq. ft. GARAGE: 668 sq. ft.  
SIZES AND DIMENSIONS ARE APPROXIMATE, ACTUAL MAY VARY.

website: [www.AffinityRealEstate.com](http://www.AffinityRealEstate.com) | email: [info@affinityrealestate.com](mailto:info@affinityrealestate.com) | office: 218-237-3333 | fax: 218-237-3377

**Affinity**  
REAL ESTATE INC

**\$340,000**  
MLS 6511799 Residential  
10949 County 32  
Motley MN 56466