



MLS 6512133 Commercial Sale

\$125,000

**Description:**

Welcome to Toy Store 34. The Lakes areas newest Common Interest Storage Condo Development. Two Building sizes Available 32' x 64' (2048 S/F) and 40' x 64' (2560 S/F) all feature 16' wide x 14' high Insulated Overhead Door with Commercial Door Opener, 4 Windows, Concrete floor with Drain, Vaulted Ceiling Rafters, Walk-in Service door with Keypad Deadbolt, 200 Amp Electric Service, 3' Wide concrete apron across the entire width of the Building. Conveniently Located 1 Mile East of Detroit Lakes on Hwy 34 and only minutes from Detroit Lake.

**Additional Details:**

Year Built	2023
Lot Dimensions	34x66
Garage Stalls	1
School District	22
Taxes	\$1
Taxes with Assessments	\$1
Tax Year	2024

**Additional Features:**

**Fuel:** Other **Garage:** 1 **Heat:** None **Sewer:** None **Water:** None

**Driving Directions:**

Take Highway 34 east of Detroit Lakes for 1 mile. Property is on the South side of the road.



Listed By:  
HomeSmart Adventure Realty

Affinity Real Estate Inc. participates in the Regional Multiple Listing Service of Minnesota, Inc Broker Reciprocity (sm) program, allowing us to display other broker's listings on our website. All properties are subject to prior sale, change or withdrawal.



Call Affinity Real Estate

218-237-3333

info@affinityrealestate.com



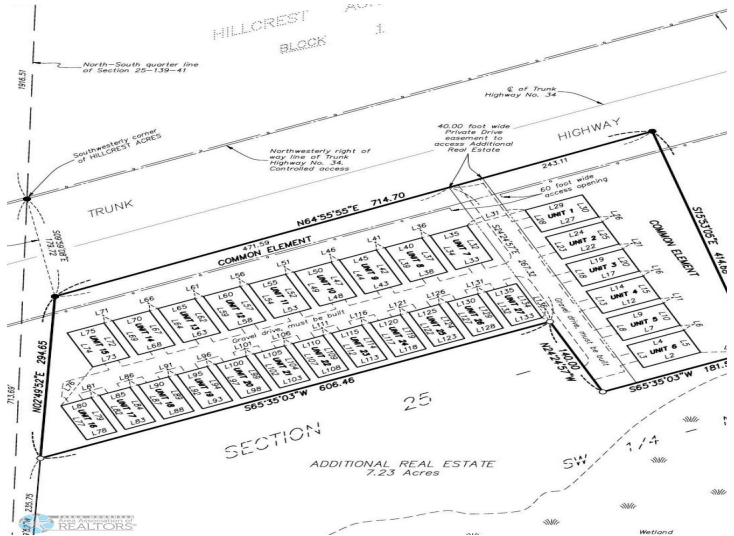
Affinity Real Estate - 600 Park Avenue South - Park Rapids MN 56470



website: [www.AffinityRealEstate.com](http://www.AffinityRealEstate.com) | email: [info@affinityrealestate.com](mailto:info@affinityrealestate.com) | office: 218-237-3333 | fax: 218-237-3377



**\$125,000**  
 MLS 6512133 Commercial  
 Sale  
 28603 State Highway 34  
 Detroit Lakes MN 56501



website: [www.AffinityRealEstate.com](http://www.AffinityRealEstate.com) | email: [info@affinityrealestate.com](mailto:info@affinityrealestate.com) | office: 218-237-3333 | fax:218-237-3377



**\$125,000**  
MLS 6512133 Commercial  
Sale  
28603 State Highway 34  
Detroit Lakes MN 56501