



MLS 6512153 Residential

**\$474,900**

3,138 sq ft  
3 bedrooms  
2 baths

717 Shore Drive  
Detroit Lakes MN 56501

Status: Active

**Description:**

This stunning split-level home sits on South Shore Drive, directly across from Big Detroit Lake and near public access to the new South Shore Park. It features 3 bedrooms, with the possibility of a 4th. The spacious kitchen and open floor plan are complemented by beautiful hardwood floors. The master bedroom, with its vaulted ceilings, leads to a large master bath complete with a separate shower and a jetted tub. The lower level offers 2 (potentially 3) bedrooms, a full bath, and a generously sized family room. Outside, the yard boasts mature trees and a sprinkler system.

**Additional Details:**

Year Built	2001
Lot Acres	0.44
Lot Dimensions	100x184
Garage Stalls	3
School District	22
Taxes	\$4,018
Taxes with Assessments	\$4,018
Tax Year	2023

**Additional Features:**

**Basement:** Egress Window(s), Full **Fuel:** Natural Gas **Garage:** 3 **Heat:** Forced Air **Sewer:** City Sewer/Connected **Water:** City Water/Connected **Air Conditioning:** Central Air

**Driving Directions:**

From HWY 10 turn right on to E Shore Dr, then left on to S Shore Dr



Listed By:  
Juve Real Estate

Affinity Real Estate Inc. participates in the Regional Multiple Listing Service of Minnesota, Inc Broker Reciprocity (sm) program, allowing us to display other broker's listings on our website. All properties are subject to prior sale, change or withdrawal.



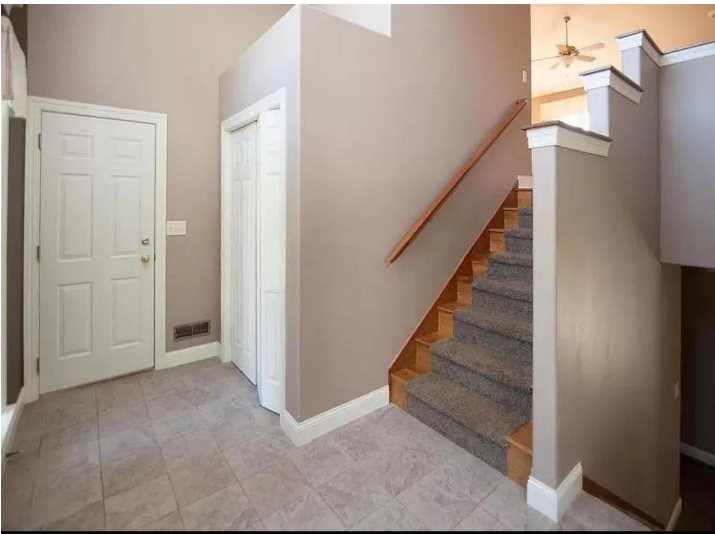
Call Affinity Real Estate

**218-237-3333**

[info@affinityrealestate.com](mailto:info@affinityrealestate.com)



Affinity Real Estate - 600 Park Avenue South - Park Rapids MN 56470



website: [www.AffinityRealEstate.com](http://www.AffinityRealEstate.com) | email: [info@affinityrealestate.com](mailto:info@affinityrealestate.com) | office: 218-237-3333 | fax: 218-237-3377

**Affinity**  
REAL ESTATE INC

**\$474,900**  
MLS 6512153 Residential  
717 Shore Drive  
Detroit Lakes MN 56501



website: [www.AffinityRealEstate.com](http://www.AffinityRealEstate.com) | email: [info@affinityrealestate.com](mailto:info@affinityrealestate.com) | office: 218-237-3333 | fax:218-237-3377



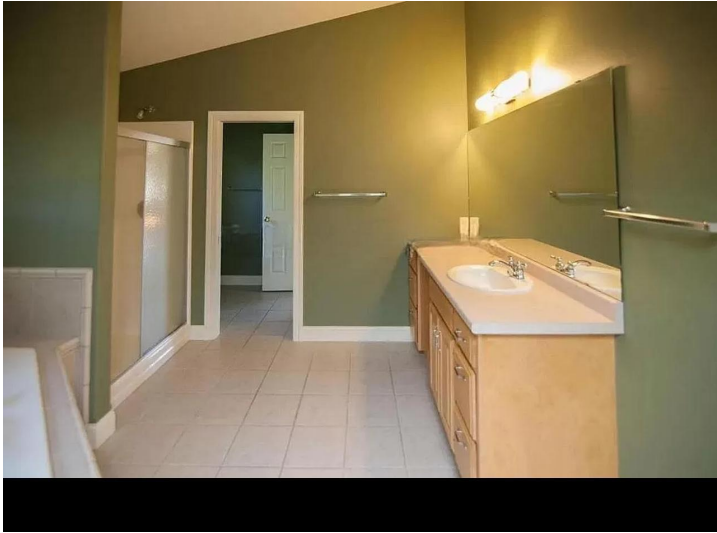
**\$474,900**  
MLS 6512153 Residential  
717 Shore Drive  
Detroit Lakes MN 56501



website: [www.AffinityRealEstate.com](http://www.AffinityRealEstate.com) | email: [info@affinityrealestate.com](mailto:info@affinityrealestate.com) | office: 218-237-3333 | fax: 218-237-3377

**Affinity**  
REAL ESTATE INC

**\$474,900**  
MLS 6512153 Residential  
717 Shore Drive  
Detroit Lakes MN 56501



website: [www.AffinityRealEstate.com](http://www.AffinityRealEstate.com) | email: [info@affinityrealestate.com](mailto:info@affinityrealestate.com) | office: 218-237-3333 | fax:218-237-3377



**\$474,900**  
MLS 6512153 Residential  
717 Shore Drive  
Detroit Lakes MN 56501



website: [www.AffinityRealEstate.com](http://www.AffinityRealEstate.com) | email: [info@affinityrealestate.com](mailto:info@affinityrealestate.com) | office: 218-237-3333 | fax:218-237-3377

**Affinity**  
REAL ESTATE INC

**\$474,900**  
MLS 6512153 Residential  
717 Shore Drive  
Detroit Lakes MN 56501



website: [www.AffinityRealEstate.com](http://www.AffinityRealEstate.com) | email: [info@affinityrealestate.com](mailto:info@affinityrealestate.com) | office: 218-237-3333 | fax:218-237-3377



**\$474,900**  
MLS 6512153 Residential  
717 Shore Drive  
Detroit Lakes MN 56501