



MLS 6513383 Residential

\$369,500

3,072 sq ft
5 bedrooms
3 baths

5859 Annalee Lane
Bemidji MN 56601

Status: Closed

Description:

Great 4-plus bedroom, 3 bath, large split level home in this great neighborhood conveniently located close to BHS, Bemidji Middle School, downtown, and west end shopping. New roof, and HVAC system. Spacious primary suite, large maintenance free deck overlooking beautifully wooded yard, ledge-rock gas fireplace in the huge family room downstairs. Lots of natural light throughout the home. Triple car attached garage. Check out the virtual tour and then call and schedule your private showing today!!

Additional Details:

Year Built	2004
Lot Acres	1.04
Lot Dimensions	150x300
Garage Stalls	3
School District	31
Taxes	\$3,002
Taxes with Assessments	\$3,002
Tax Year	2024

Additional Features:

Fuel: Propane **Heat:** Forced Air

Driving Directions:

From downtown Bemidji take 5th St W to Archery Rd NW. Right on Archery Rd to Mid-Valley Ln NW. Right on Mid-Valley Ln NW follow around to the right to Annalee Ln NW. Home will be on your left.



Listed By:
Better Homes and Gardens Real Estate First Choice

Affinity Real Estate Inc. participates in the Regional Multiple Listing Service of Minnesota, Inc Broker Reciprocity (sm) program, allowing us to display other broker's listings on our website. All properties are subject to prior sale, change or withdrawal.



Call Affinity Real Estate

218-237-3333

info@affinityrealestate.com



Affinity Real Estate - 600 Park Avenue South - Park Rapids MN 56470



website: www.AffinityRealEstate.com | email: info@affinityrealestate.com | office: 218-237-3333 | fax: 218-237-3377

Affinity
REAL ESTATE INC

\$369,500
MLS 6513383 Residential
5859 Annalee Lane
Bemidji MN 56601



website: www.AffinityRealEstate.com | email: info@affinityrealestate.com | office: 218-237-3333 | fax: 218-237-3377

Affinity
REAL ESTATE INC

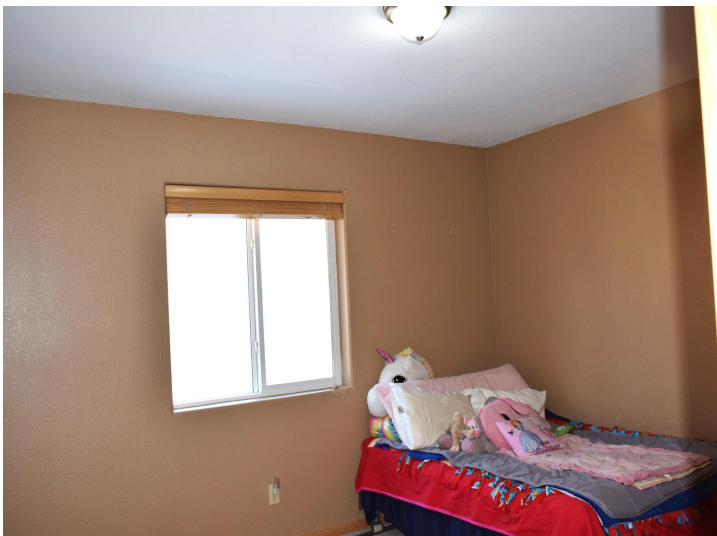
\$369,500
MLS 6513383 Residential
5859 Annalee Lane
Bemidji MN 56601



website: www.AffinityRealEstate.com | email: info@affinityrealestate.com | office: 218-237-3333 | fax: 218-237-3377



\$369,500
 MLS 6513383 Residential
 5859 Annalee Lane
 Bemidji MN 56601



website: www.AffinityRealEstate.com | email: info@affinityrealestate.com | office: 218-237-3333 | fax: 218-237-3377

Affinity
REAL ESTATE INC

\$369,500
MLS 6513383 Residential
5859 Annalee Lane
Bemidji MN 56601



website: www.AffinityRealEstate.com | email: info@affinityrealestate.com | office: 218-237-3333 | fax: 218-237-3377

Affinity
REAL ESTATE INC

\$369,500
MLS 6513383 Residential
5859 Annalee Lane
Bemidji MN 56601



website: www.AffinityRealEstate.com | email: info@affinityrealestate.com | office: 218-237-3333 | fax: 218-237-3377



\$369,500
MLS 6513383 Residential
5859 Annalee Lane
Bemidji MN 56601



website: www.AffinityRealEstate.com | email: info@affinityrealestate.com | office: 218-237-3333 | fax: 218-237-3377

Affinity
REAL ESTATE INC

\$369,500

MLS 6513383 Residential
5859 Annalee Lane
Bemidji MN 56601