



MLS 6513479 Lake Land

\$83,500

Description:

450 ft of lakeshore on Little Wolf Lake known for Musky fishing. Dock and pontoon lift included. RV sites with spectacular view of Little Wolf Lake. Camp on top with electricity and cart ramp capable of light camper access leading to ATV/walking path along shoreline and plenty of room for shore side camping and gazebo. Public access within quarter mile of site.

Additional Details:

Lot Acres	1.2
Lot Dimensions	120x450
School District	115
Taxes	\$268
Taxes with Assessments	\$268
Tax Year	2023

Additional Features:

Driving Directions:

From Hwy 2 between Bemidji and Cass Lake, turn north on South Big Wolf Lake Rd, right on Wolf Lake Rd, right on Wolf Ridge, Property on left.



Listed By:
Andy Williams Realty Group, LLC

Affinity Real Estate Inc. participates in the Regional Multiple Listing Service of Minnesota, Inc Broker Reciprocity (sm) program, allowing us to display other broker's listings on our website. All properties are subject to prior sale, change or withdrawal.



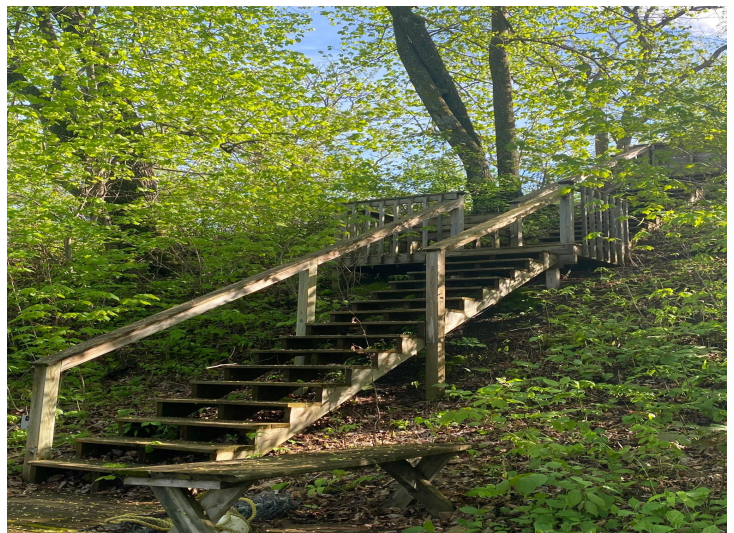
Call Affinity Real Estate

218-237-3333

info@affinityrealestate.com



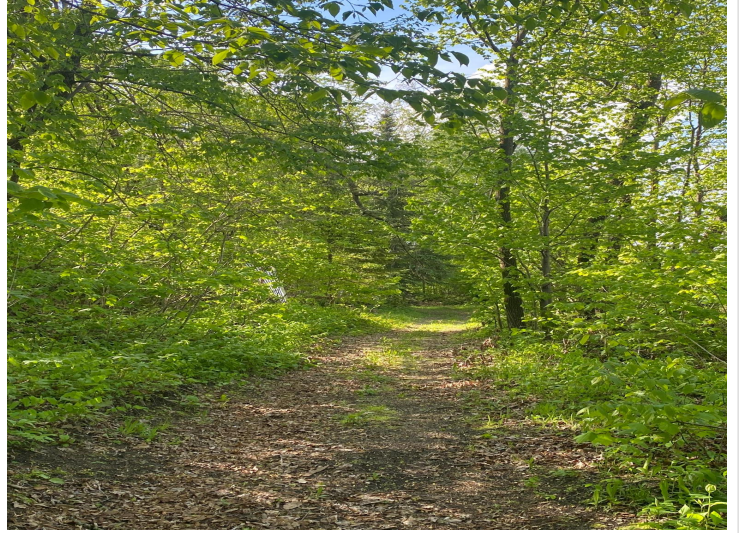
Affinity Real Estate - 600 Park Avenue South - Park Rapids MN 56470



website: www.AffinityRealEstate.com | email: info@affinityrealestate.com | office: 218-237-3333 | fax:218-237-3377



\$83,500
MLS 6513479 Lake Land
TBD Wolf Ridge Drive
Cass Lake MN 56633



website: www.AffinityRealEstate.com | email: info@affinityrealestate.com | office: 218-237-3333 | fax:218-237-3377

Affinity
REAL ESTATE INC

\$83,500
MLS 6513479 Lake Land
TBD Wolf Ridge Drive
Cass Lake MN 56633



website: www.AffinityRealEstate.com | email: info@affinityrealestate.com | office: 218-237-3333 | fax:218-237-3377



\$83,500
MLS 6513479 Lake Land
TBD Wolf Ridge Drive
Cass Lake MN 56633



website: www.AffinityRealEstate.com | email: info@affinityrealestate.com | office: 218-237-3333 | fax:218-237-3377



\$83,500
MLS 6513479 Lake Land
TBD Wolf Ridge Drive
Cass Lake MN 56633



website: www.AffinityRealEstate.com | email: info@affinityrealestate.com | office: 218-237-3333 | fax:218-237-3377

Affinity
REAL ESTATE INC

\$83,500
MLS 6513479 Lake Land
TBD Wolf Ridge Drive
Cass Lake MN 56633



website: www.AffinityRealEstate.com | email: info@affinityrealestate.com | office: 218-237-3333 | fax:218-237-3377



\$83,500
MLS 6513479 Lake Land
TBD Wolf Ridge Drive
Cass Lake MN 56633