



MLS 6514617 Lake Home

\$669,500

5,000 sq ft
4 bedrooms
4 baths

625 Robin Lane
Bemidji MN 56601

Waterfront: Irving

Status: Hold

Description:

Gorgeous and elegant! Quality built 5200 sq ft home in the Irving Oaks Development in the city of Bemidji. Close to downtown, area schools, and medical facilities, this is the perfect place to make your home. It also gives you shared access to walking trails and shared access to Lake Irving with a private dock and boat slip. The main level features hardwood floors, magnificent kitchen, spacious dining area, cozy living room with fireplace, a spacious light filled primary bedroom with 3/4 bath plus a huge walk-in closet, 2 additional bedrooms, and a delightful laundry room. The lower level features a family room with electric fireplace, 3/4 BA, utility room, storage room, and a bedroom. It also includes an unbelievable sized multi-purpose/exercise room. Completing this truly unique property is an attached heated/insulated 2 stall garage along with a detached 2 stall garage.
Realtor note: A rear deck and beautiful landscaping make for great spaces for outdoor dining and entertaining.

Additional Details:

Year Built	2012
Lot Acres	0.58
Lot Dimensions	180x200x130x120
Garage Stalls	4
School District	31
Taxes	\$8,127
Taxes with Assessments	\$8,308
Tax Year	2024

Additional Features:

Basement: Daylight/Lookout Windows, Finished, Full, Storage Space, Sump Pump **Fuel:** Natural Gas **Garage:** 4 **Heat:** Forced Air, Fireplace(s)
Sewer: City Sewer/Connected **Water:** City Water/Connected **Air Conditioning:** Central Air

Driving Directions:

West on Division St, left on Jefferson, left on S Lake Irving Dr SW, left on Robin Ln. Property on the left.



Listed By:
CENTURY 21 Dickinson Realtors

Affinity Real Estate Inc. participates in the Regional Multiple Listing Service of Minnesota, Inc Broker Reciprocity (sm) program, allowing us to display other broker's listings on our website. All properties are subject to prior sale, change or withdrawal.



Call Affinity Real Estate

218-237-3333

info@affinityrealestate.com



Affinity Real Estate - 600 Park Avenue South - Park Rapids MN 56470



website: www.AffinityRealEstate.com | email: info@affinityrealestate.com | office: 218-237-3333 | fax:218-237-3377

Affinity
REAL ESTATE INC

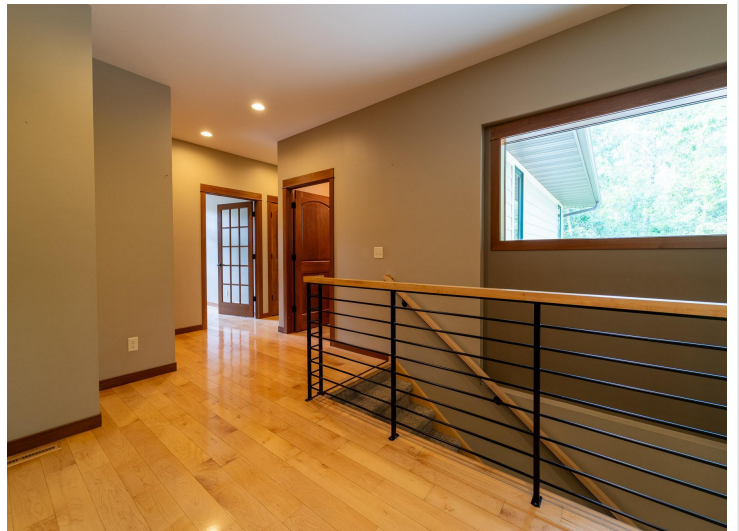
\$669,500
MLS 6514617 Lake Home
625 Robin Lane
Bemidji MN 56601



website: www.AffinityRealEstate.com | email: info@affinityrealestate.com | office: 218-237-3333 | fax:218-237-3377



\$669,500
MLS 6514617 Lake Home
625 Robin Lane
Bemidji MN 56601



website: www.AffinityRealEstate.com | email: info@affinityrealestate.com | office: 218-237-3333 | fax:218-237-3377



\$669,500
MLS 6514617 Lake Home
625 Robin Lane
Bemidji MN 56601



website: www.AffinityRealEstate.com | email: info@affinityrealestate.com | office: 218-237-3333 | fax:218-237-3377



\$669,500
MLS 6514617 Lake Home
625 Robin Lane
Bemidji MN 56601



website: www.AffinityRealEstate.com | email: info@affinityrealestate.com | office: 218-237-3333 | fax:218-237-3377



\$669,500
MLS 6514617 Lake Home
625 Robin Lane
Bemidji MN 56601



website: www.AffinityRealEstate.com | email: info@affinityrealestate.com | office: 218-237-3333 | fax:218-237-3377

Affinity
REAL ESTATE INC

\$669,500
MLS 6514617 Lake Home
625 Robin Lane
Bemidji MN 56601



website: www.AffinityRealEstate.com | email: info@affinityrealestate.com | office: 218-237-3333 | fax:218-237-3377



\$669,500
MLS 6514617 Lake Home
625 Robin Lane
Bemidji MN 56601