



MLS 6514822 Residential

\$78,000

744 sq ft
2 bedrooms
1 baths

48216 County 3 Road
Bemidji MN 56601

Status: Pending

Description:

This 2 bed, 1 bath fixer-upper in Bemidji, MN is ripe for transformation into a lucrative income property or your next home with complete privacy. With its prime location and solid bones, this property presents an ideal opportunity to capitalize on the flip for profit or having a home with privacy to enjoy the fishing, hunting and all of the outdoor activities this house has to offer. Don't miss out...schedule your showing today.

Additional Details:

Year Built	1975
Lot Acres	16.39
Lot Dimensions	405x1300x583x900x124
School District	31
Taxes	\$760
Taxes with Assessments	(unreported)
Tax Year	2023

Additional Features:

Basement: None **Fuel:** Propane, Wood **Heat:** Forced Air, Fireplace(s), Wood Stove **Sewer:** Other, Private Sewer **Water:** Private **Air Conditioning:** None

Driving Directions:

From Bemidji take Becida Rd Sw 7.5 miles turn right on County Rd 3 for 6 miles property will be on your left side.



Listed By:
BEX Realty, LLC

Affinity Real Estate Inc. participates in the Regional Multiple Listing Service of Minnesota, Inc Broker Reciprocity (sm) program, allowing us to display other broker's listings on our website. All properties are subject to prior sale, change or withdrawal.



Call Affinity Real Estate

218-237-3333

info@affinityrealestate.com



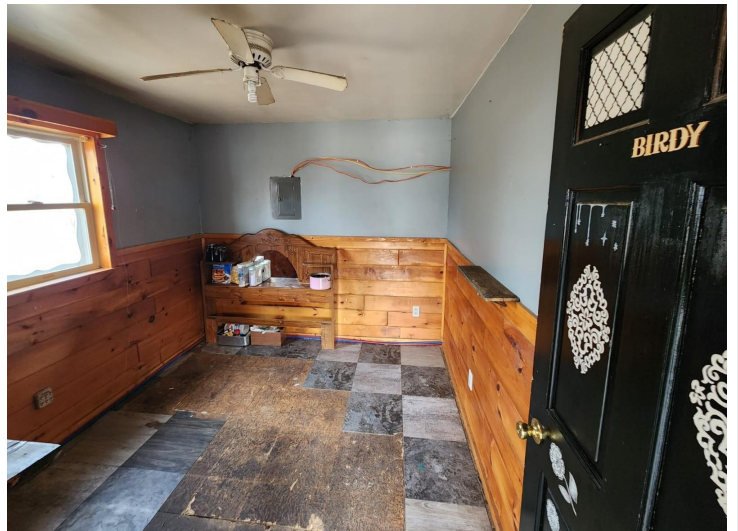
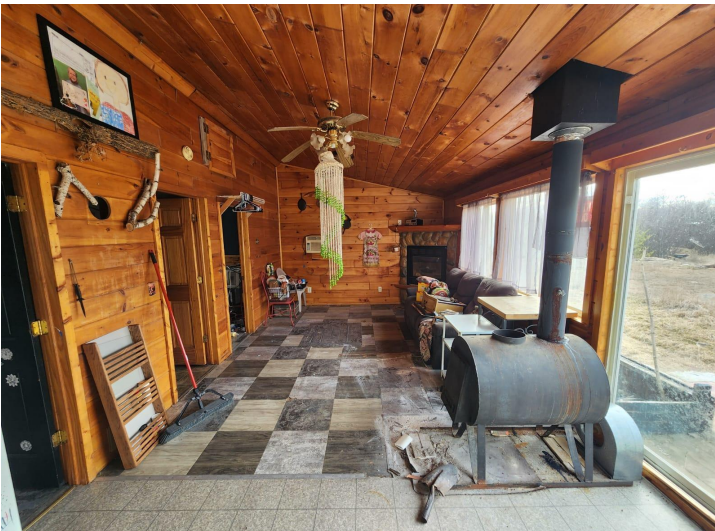
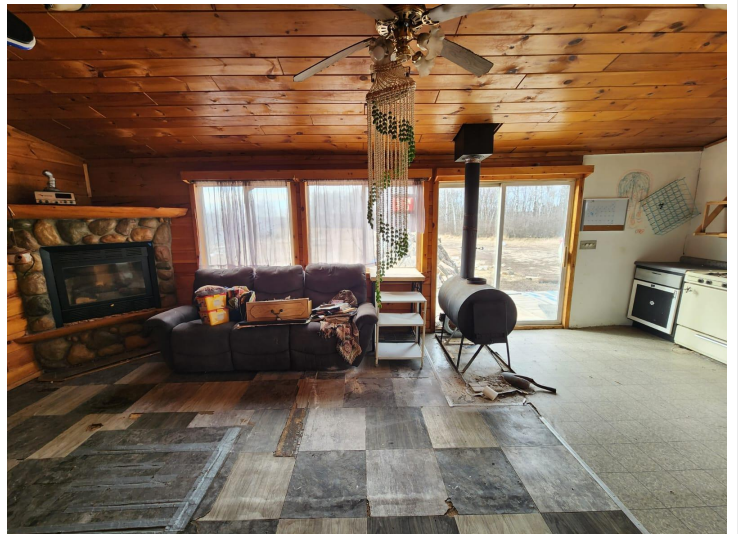
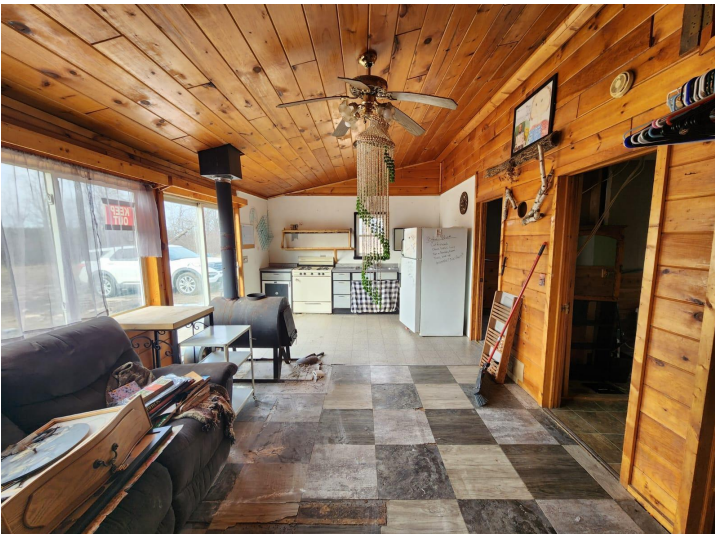
Affinity Real Estate - 600 Park Avenue South - Park Rapids MN 56470



website: www.AffinityRealEstate.com | email: info@affinityrealestate.com | office: 218-237-3333 | fax: 218-237-3377



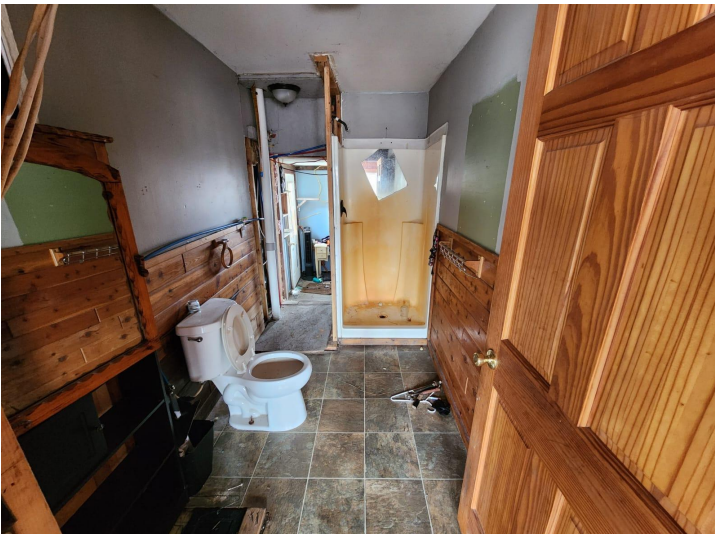
\$78,000
 MLS 6514822 Residential
 48216 County 3 Road
 Bemidji MN 56601



website: www.AffinityRealEstate.com | email: info@affinityrealestate.com | office: 218-237-3333 | fax: 218-237-3377

Affinity
REAL ESTATE INC

\$78,000
MLS 6514822 Residential
48216 County 3 Road
Bemidji MN 56601



website: www.AffinityRealEstate.com | email: info@affinityrealestate.com | office: 218-237-3333 | fax: 218-237-3377

Affinity
REAL ESTATE INC

\$78,000
MLS 6514822 Residential
48216 County 3 Road
Bemidji MN 56601



website: www.AffinityRealEstate.com | email: info@affinityrealestate.com | office: 218-237-3333 | fax: 218-237-3377



\$78,000
MLS 6514822 Residential
48216 County 3 Road
Bemidji MN 56601