



MLS 6514855 Land

**\$35,000**

2.92 Acres  
Raw Land

TBD Deer Track Trail  
Walker MN 56484

Status: Active

**Description:**

Location, location, location. 2.92 acres, wooded, nicely private, awesome overlook from building site. Sets in the midst of endless public lands. Hunt, fish, 4-wheel, snowmobile, berry pick, bike trails, walking trails all just minutes from door. Yet, you are only 12 min from Walker, shopping, restaurants, golf courses, entertainment, 12 min to your choice of 2 Leech Lake public landings, Walker City Park 12 min offers sand beach, picnic grounds, rest rooms, fish cleaning facility, tennis & pickle ball courts. 5 min to Casino, 5 min to local Bar & Grill. Very nice. \$35,000

**Additional Details:**

Lot Acres	2.92
Lot Dimensions	490x790x150x490
School District	113
Taxes	\$110
Taxes with Assessments	\$110
Tax Year	2024

**Additional Features:**

**Driving Directions:**

From the intersection of Hwy 371 & 200 (Casino) go east on Hwy 200 1.8 miles, County 13 (Onigum Rd). Go 1 mile on Onigum to Deer Track Trail on left, follow to sign on left.



Listed By:  
askRICK.com dba Walker Area Realty

Affinity Real Estate Inc. participates in the Regional Multiple Listing Service of Minnesota, Inc Broker Reciprocity (sm) program, allowing us to display other broker's listings on our website. All properties are subject to prior sale, change or withdrawal.



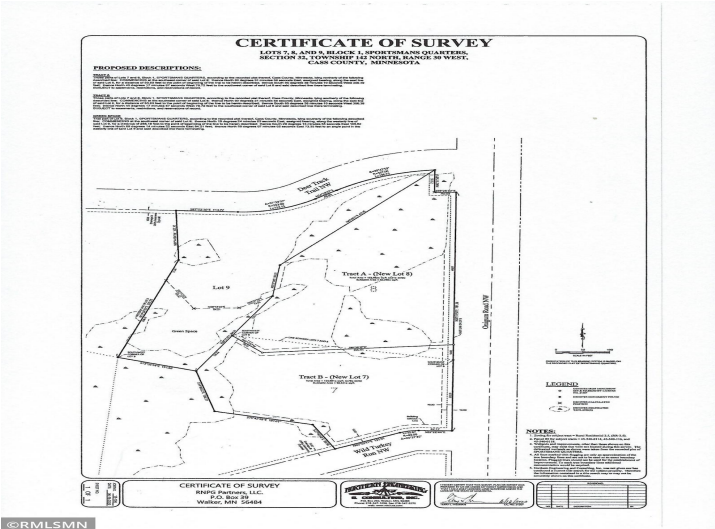
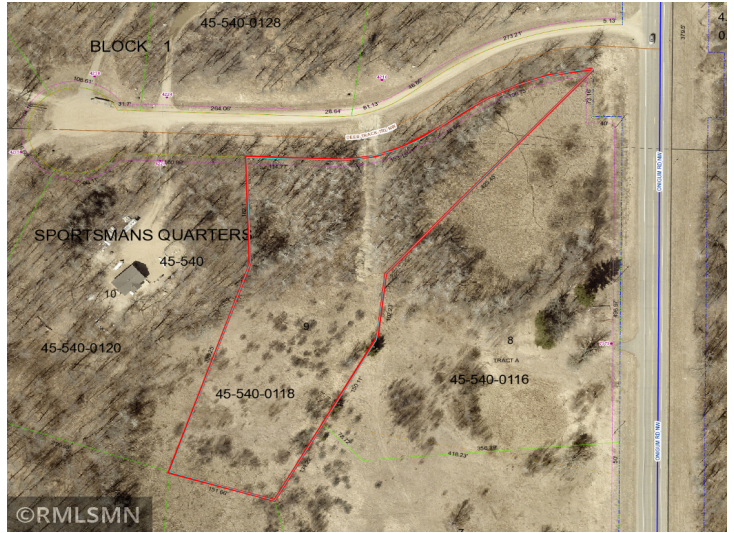
**Call Affinity Real Estate**

**218-237-3333**

**info@affinityrealestate.com**



**Affinity Real Estate - 600 Park Avenue South - Park Rapids MN 56470**



©RMLSMN

website: [www.AffinityRealEstate.com](http://www.AffinityRealEstate.com) | email: [info@affinityrealestate.com](mailto:info@affinityrealestate.com) | office: 218-237-3333 | fax:218-237-3377



**\$35,000**  
 MLS 6514855 Land  
 TBD Deer Track Trail  
 Walker MN 56484