



MLS 6516057 Lake Home

\$650,000

5,082 sq ft
8 bedrooms
6 baths

6833 Maple Leaf Drive
Walker MN 56484

Waterfront: Leech

Status: Active

Description:

Get ready to host epic get-togethers in this fabulous retreat! With 8 bedrooms, 6 baths, and jaw-dropping views of Leech Lake, you and your guests will fall in love with being here! Two sun porches, a home office, and an attached garage provide ample space, while a heated workshop keeps hobbies warm year-round. Don't forget the covered boat slip for easy lake access! With MN's best fishing and boating right outside and 8 lakeside restaurants and bars to explore, the fun never ends at your new lakefront paradise. Whether your passion is fishing, water sports, sunset cruises and boating to dinner, Leech Lake is the lake for you! No restrictions or covenants on the home, the boat slip is part of an association. Well and septic have been inspected and are in compliance.

Additional Details:

Year Built	1996
Lot Acres	1
Lot Dimensions	320x143x245x130x94
Garage Stalls	2
School District	113
Taxes	\$2,820
Taxes with Assessments	\$2,880
Tax Year	2024

Additional Features:

Basement: Block, Crawl Space, Egress Window(s), Finished, Walkout **Fuel:** Electric, Propane, Wood **Garage:** 2 **Heat:** Baseboard, Forced Air, Wood Stove **Sewer:** Private Sewer, Septic System Compliant - Yes **Water:** Submersible - 4 Inch, Drilled, Private, Well **Air Conditioning:** Central Air

Driving Directions:

From Walker, East on MN 200, left on Maple Leaf, right at the T, follow to property on your left.



Listed By:
Bill Hansen Realty/Longville

Affinity Real Estate Inc. participates in the Regional Multiple Listing Service of Minnesota, Inc Broker Reciprocity (sm) program, allowing us to display other broker's listings on our website. All properties are subject to prior sale, change or withdrawal.



Call Affinity Real Estate

218-237-3333

info@affinityrealestate.com



Affinity Real Estate - 600 Park Avenue South - Park Rapids MN 56470



website: www.AffinityRealEstate.com | email: info@affinityrealestate.com | office: 218-237-3333 | fax:218-237-3377

Affinity
REAL ESTATE INC

\$650,000
MLS 6516057 Lake Home
6833 Maple Leaf Drive
Walker MN 56484



website: www.AffinityRealEstate.com | email: info@affinityrealestate.com | office: 218-237-3333 | fax:218-237-3377

Affinity
REAL ESTATE INC

\$650,000
MLS 6516057 Lake Home
6833 Maple Leaf Drive
Walker MN 56484



website: www.AffinityRealEstate.com | email: info@affinityrealestate.com | office: 218-237-3333 | fax: 218-237-3377

Affinity
REAL ESTATE INC

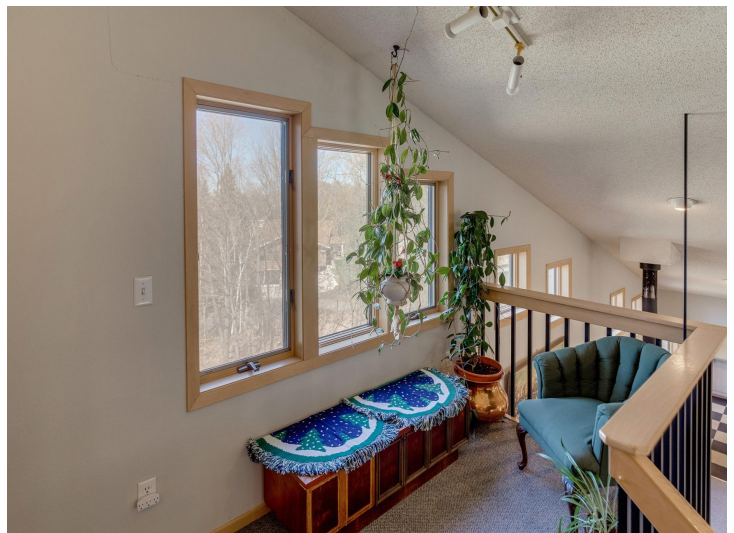
\$650,000
MLS 6516057 Lake Home
6833 Maple Leaf Drive
Walker MN 56484



website: www.AffinityRealEstate.com | email: info@affinityrealestate.com | office: 218-237-3333 | fax:218-237-3377

Affinity
REAL ESTATE INC

\$650,000
MLS 6516057 Lake Home
6833 Maple Leaf Drive
Walker MN 56484



website: www.AffinityRealEstate.com | email: info@affinityrealestate.com | office: 218-237-3333 | fax:218-237-3377

Affinity
REAL ESTATE INC

\$650,000
MLS 6516057 Lake Home
6833 Maple Leaf Drive
Walker MN 56484



website: www.AffinityRealEstate.com | email: info@affinityrealestate.com | office: 218-237-3333 | fax: 218-237-3377

Affinity
REAL ESTATE INC

\$650,000
MLS 6516057 Lake Home
6833 Maple Leaf Drive
Walker MN 56484



website: www.AffinityRealEstate.com | email: info@affinityrealestate.com | office: 218-237-3333 | fax:218-237-3377



\$650,000
MLS 6516057 Lake Home
6833 Maple Leaf Drive
Walker MN 56484



website: www.AffinityRealEstate.com | email: info@affinityrealestate.com | office: 218-237-3333 | fax:218-237-3377



\$650,000
MLS 6516057 Lake Home
6833 Maple Leaf Drive
Walker MN 56484



website: www.AffinityRealEstate.com | email: info@affinityrealestate.com | office: 218-237-3333 | fax:218-237-3377



\$650,000
MLS 6516057 Lake Home
6833 Maple Leaf Drive
Walker MN 56484



website: www.AffinityRealEstate.com | email: info@affinityrealestate.com | office: 218-237-3333 | fax:218-237-3377



\$650,000
MLS 6516057 Lake Home
6833 Maple Leaf Drive
Walker MN 56484