



MLS 6516112 Lake Land

\$74,900

Description:

Buffalo Lake Lot. 100' shoreline by 391'. Higher building area by road, lower area by lake. A custom boardwalk would be a great fit! The perfect spot to build your forever home. No covenants apply.

Additional Details:

Lot Acres	0.75
Lot Dimensions	100x391
School District	22
Taxes	\$90
Taxes with Assessments	\$90
Tax Year	2024

Additional Features:

Driving Directions:

FROM DL TAKE RICHWOOD ROAD TO CO HWY 26, RIGHT TO PROPERTY



Listed By:
The Real Estate Company of Detroit Lakes

Affinity Real Estate Inc. participates in the Regional Multiple Listing Service of Minnesota, Inc Broker Reciprocity (sm) program, allowing us to display other broker's listings on our website. All properties are subject to prior sale, change or withdrawal.



Call Affinity Real Estate

218-237-3333

info@affinityrealestate.com



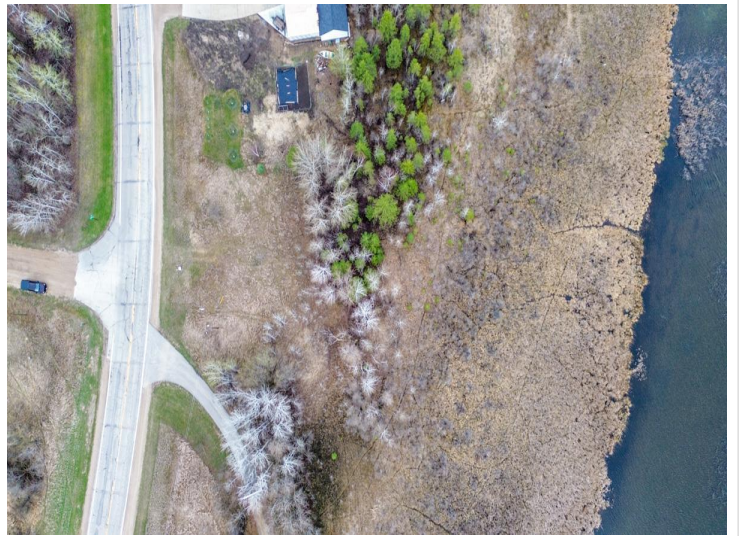
Affinity Real Estate - 600 Park Avenue South - Park Rapids MN 56470



website: www.AffinityRealEstate.com | email: info@affinityrealestate.com | office: 218-237-3333 | fax:218-237-3377



\$74,900
MLS 6516112 Lake Land
29988 CO HWY 26
Rochert MN 56578



website: www.AffinityRealEstate.com | email: info@affinityrealestate.com | office: 218-237-3333 | fax:218-237-3377



\$74,900
MLS 6516112 Lake Land
29988 CO HWY 26
Rochert MN 56578



website: www.AffinityRealEstate.com | email: info@affinityrealestate.com | office: 218-237-3333 | fax:218-237-3377



\$74,900

MLS 6516112 Lake Land
29988 CO HWY 26
Rochert MN 56578