



MLS 6516377 Residential

\$450,000

3,680 sq ft
4 bedrooms
4 baths

406 Western Avenue
Park Rapids MN 56470

Status: Pending

Description:

All offers due by 5pm on 4/28/24. Fantastic 4-bedroom, 4-bath home on a 3-acre wooded lot, right on the edge of the city limits! This home has mature trees that offer privacy and a quiet atmosphere. Inside, you'll find the perfect layout! The main floor displays a bright open floor concept featuring two master bedroom suites with walk-in closets and ensuite bathrooms. And who doesn't want in-floor heat, a main-floor laundry, and a mud room right off the garage? The walk-out lower-level plays host to two large additional bedrooms. Step outside to enjoy your coffee from the covered deck, overlooking your fenced backyard and pavilion with built-in fireplace. You'll also appreciate the attached heated double garage, complete with a third stall tucked under the backside of the house and additional shed, offering convenient parking and multiple storage options. Experience the best of both worlds – the serenity of a country living feel - combined with the convenience of city amenities.

Additional Details:

Year Built	2005
Lot Acres	3
Lot Dimensions	220x592
Garage Stalls	3
School District	309
Taxes	\$4,512
Taxes with Assessments	\$4,512
Tax Year	2023

Additional Features:

Basement: Block, Egress Window(s), Finished, Full, Walkout **Fuel:** Electric, Natural Gas **Garage:** 3 **Heat:** Dual, Forced Air, Fireplace(s), Radiant Floor **Sewer:** City Sewer/Connected **Water:** City Water/Connected **Air Conditioning:** Central Air

Driving Directions:

From Hwy 34/71 - Go west on Hwy 34. Take a left on Western Ave. Proceed 0.3 miles, home is on left.



Listed By:
Keller Williams Realty Professionals

Affinity Real Estate Inc. participates in the Regional Multiple Listing Service of Minnesota, Inc Broker Reciprocity (sm) program, allowing us to display other broker's listings on our website. All properties are subject to prior sale, change or withdrawal.



Call Affinity Real Estate

218-237-3333

info@affinityrealestate.com



Affinity Real Estate - 600 Park Avenue South - Park Rapids MN 56470



website: www.AffinityRealEstate.com | email: info@affinityrealestate.com | office: 218-237-3333 | fax: 218-237-3377

Affinity
REAL ESTATE INC

\$450,000
MLS 6516377 Residential
406 Western Avenue
Park Rapids MN 56470



website: www.AffinityRealEstate.com | email: info@affinityrealestate.com | office: 218-237-3333 | fax: 218-237-3377

Affinity
REAL ESTATE INC

\$450,000
MLS 6516377 Residential
406 Western Avenue
Park Rapids MN 56470



website: www.AffinityRealEstate.com | email: info@affinityrealestate.com | office: 218-237-3333 | fax: 218-237-3377



\$450,000
MLS 6516377 Residential
406 Western Avenue
Park Rapids MN 56470



website: www.AffinityRealEstate.com | email: info@affinityrealestate.com | office: 218-237-3333 | fax: 218-237-3377



\$450,000
 MLS 6516377 Residential
 406 Western Avenue
 Park Rapids MN 56470



website: www.AffinityRealEstate.com | email: info@affinityrealestate.com | office: 218-237-3333 | fax: 218-237-3377

Affinity
REAL ESTATE INC

\$450,000
MLS 6516377 Residential
406 Western Avenue
Park Rapids MN 56470



website: www.AffinityRealEstate.com | email: info@affinityrealestate.com | office: 218-237-3333 | fax: 218-237-3377



\$450,000
 MLS 6516377 Residential
 406 Western Avenue
 Park Rapids MN 56470



website: www.AffinityRealEstate.com | email: info@affinityrealestate.com | office: 218-237-3333 | fax: 218-237-3377

Affinity
REAL ESTATE INC

\$450,000
MLS 6516377 Residential
406 Western Avenue
Park Rapids MN 56470



website: www.AffinityRealEstate.com | email: info@affinityrealestate.com | office: 218-237-3333 | fax: 218-237-3377

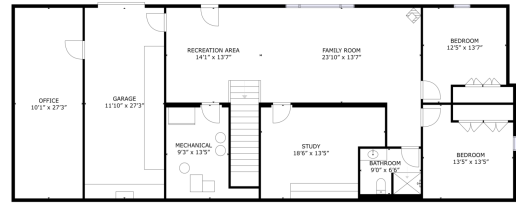


\$450,000
 MLS 6516377 Residential
 406 Western Avenue
 Park Rapids MN 56470



GROSS INTERNAL AREA
FLOOR 1: 1552 sq.ft. FLOOR 2: 2197 sq.ft.
EXCLUDED AREAS: GARAGE: 1163 sq.ft.
TOTAL: 3749 sq.ft.
SIZES AND DIMENSIONS ARE APPROXIMATE. ACTUAL MAY VARY.

FLOOR 2



GROSS INTERNAL AREA
FLOOR 1: 1552 sq.ft. FLOOR 2: 2197 sq.ft.
EXCLUDED AREAS: GARAGE: 1163 sq.ft.
TOTAL: 3749 sq.ft.
SIZES AND DIMENSIONS ARE APPROXIMATE. ACTUAL MAY VARY.

FLOOR 1



website: www.AffinityRealEstate.com | email: info@affinityrealestate.com | office: 218-237-3333 | fax: 218-237-3377



\$450,000
MLS 6516377 Residential
406 Western Avenue
Park Rapids MN 56470