



MLS 6516664 Lake Home

\$649,900

2,228 sq ft
3 bedrooms
2 baths

6329 Loonlake Drive
Pequot Lakes MN 56472

Waterfront: Loon Lake (Loon Lake
Twp.)

Status: Closed

Description:

The sounds of loons will call you in to this private cabin of solace. With nearly 221ft of private hard bottom sand shoreline on Loon Lake, enjoy this 3Bd 2Ba house with bonus porch and a huge loft that sleeps 10+. This home has a bright and inviting eat-in kitchen along with informal dining that has panoramic views and vaulted ceiling. New LVP floors, new Osmosis water system, new furnace and A/C are just a few of the betterments this property has to offer. The beauty of this property abounds with nature, wildlife, whispering pines, and level elevation to the lake. Gather your friends for a game of tennis or pickleball on the regulation size Tennis court. Afterwards, sit and relax to the crackling of the fire listening to the echoes of friends and family making memories or take in the serenity of the sunset and loons calling back and forth. Just relax, you have finally found the property that has everything.

Additional Details:

Year Built	1992
Lot Acres	7.28
Lot Dimensions	220x1495
School District	186
Taxes	\$2,266
Taxes with Assessments	\$2,332
Tax Year	2023

Additional Features:

Basement: Crawl Space **Fuel:** Propane **Heat:** Forced Air **Sewer:** Tank with Drainage Field **Water:** Drilled, Well **Air Conditioning:** Central Air

Driving Directions:

from patriot ave head west of Pequot on 168 to right on Loonlake dr.



Listed By:
Woods to Water Real Estate

Affinity Real Estate Inc. participates in the Regional Multiple Listing Service of Minnesota, Inc Broker Reciprocity (sm) program, allowing us to display other broker's listings on our website. All properties are subject to prior sale, change or withdrawal.



Call Affinity Real Estate

218-237-3333

info@affinityrealestate.com



Affinity Real Estate - 600 Park Avenue South - Park Rapids MN 56470

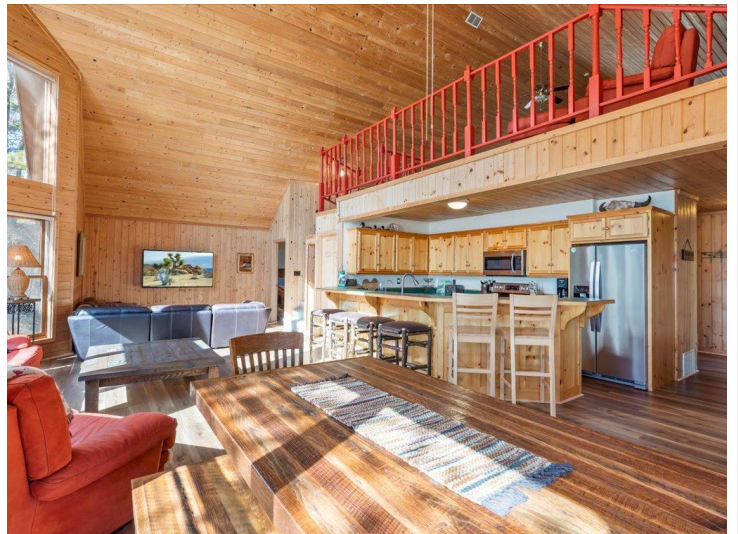
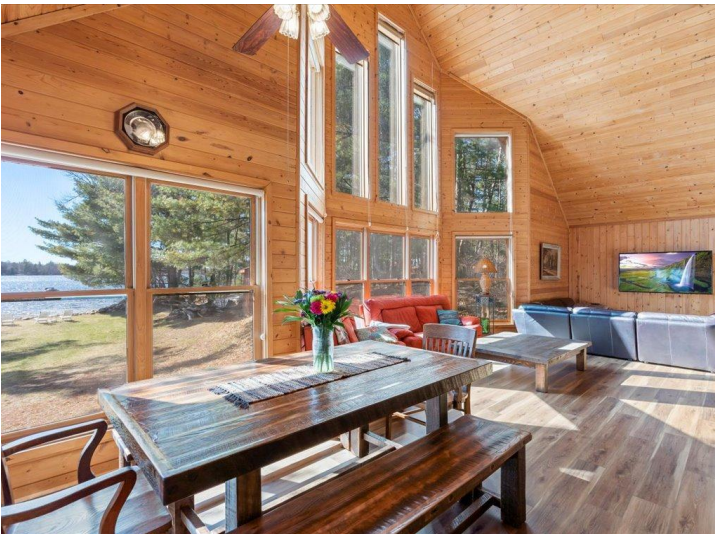


website: www.AffinityRealEstate.com | email: info@affinityrealestate.com | office: 218-237-3333 | fax: 218-237-3377



\$649,900

MLS 6516664 Lake Home
6329 Loonlake Drive
Pequot Lakes MN 56472



website: www.AffinityRealEstate.com | email: info@affinityrealestate.com | office: 218-237-3333 | fax: 218-237-3377



\$649,900
 MLS 6516664 Lake Home
 6329 Loonlake Drive
 Pequot Lakes MN 56472



website: www.AffinityRealEstate.com | email: info@affinityrealestate.com | office: 218-237-3333 | fax: 218-237-3377



\$649,900
MLS 6516664 Lake Home
6329 Loonlake Drive
Pequot Lakes MN 56472



website: www.AffinityRealEstate.com | email: info@affinityrealestate.com | office: 218-237-3333 | fax: 218-237-3377



\$649,900
 MLS 6516664 Lake Home
 6329 Loonlake Drive
 Pequot Lakes MN 56472

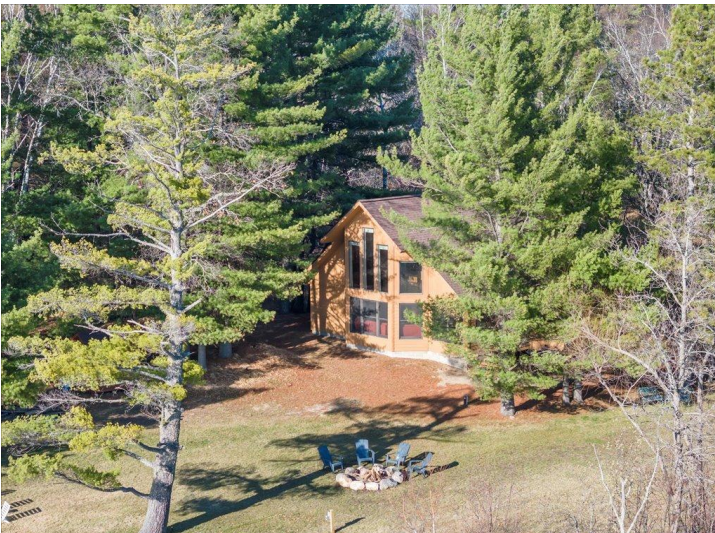


website: www.AffinityRealEstate.com | email: info@affinityrealestate.com | office: 218-237-3333 | fax: 218-237-3377



\$649,900

MLS 6516664 Lake Home
6329 Loonlake Drive
Pequot Lakes MN 56472



website: www.AffinityRealEstate.com | email: info@affinityrealestate.com | office: 218-237-3333 | fax: 218-237-3377



\$649,900
 MLS 6516664 Lake Home
 6329 Loonlake Drive
 Pequot Lakes MN 56472



website: www.AffinityRealEstate.com | email: info@affinityrealestate.com | office: 218-237-3333 | fax: 218-237-3377



\$649,900

MLS 6516664 Lake Home
6329 Loonlake Drive
Pequot Lakes MN 56472