



MLS 6516711 Lake Home

\$949,000

2,400 sq ft
2 bedrooms
2 baths

25006 Great Pine Drive
Nevis MN 56467

Waterfront: Spider Lake (29011700)

Status: Active

Description:

Panoramic Views on 1.35 Acres and Over 595 feet of Frontage You'll Find A Treasure on Interesting Spider Lake. Main Floor Living is Spacious and Has Views of the Lake from Most of the Rooms. Perfectly Situated on the Point the Master Bedroom w/ Bath, Spa & Walk In Closet has Views of the North End of the Lake. The Living Area with Gas Fireplace Shows Off the Western Shoreline Across the Lake Have Views of the Gradual Slope to the Dock. Next, From the Kitchen and Family Room.... Explore the Fishing Happening on the South End of this Magnificent Dream Lake. The Den Looks Out to the Township Maintained Great Pine Drive. The Newly Updated Deck is a Low Maintenance to Allow You to Enjoy the Outdoors with a Metal Railing. Unfinished Walk-Out Lower Level is Far From Unused and has Been Utilized as Craft, Office, Storage & a Guest Area. Storage Shed and Attached Garage. 3.5 Miles to Nevis. Home Warranty Included. The Setting Feels Like a Book...Come Take a Look.

Additional Details:

Year Built	1993
Lot Acres	1.35
Lot Dimensions	220.68+22x197.67x126.37+163.88x304.3
	8
Garage Stalls	2
School District	308
Taxes	\$5,116
Taxes with Assessments	\$5,116
Tax Year	2023

Additional Features:

Basement: Full, Unfinished, Walkout, Wood **Fuel:** Propane **Garage:** 2 **Heat:** Forced Air **Sewer:** Private Sewer, Tank with Drainage Field
Water: Well **Air Conditioning:** Central Air

Driving Directions:

Off Hwy 34, Turn North On Co 2, Aprox 3 Miles turn West/left on Great Pine Drive (Stay Right). Home will be on your right.



Listed By:
Better Homes and Gardens Real Estate First Choice

Affinity Real Estate Inc. participates in the Regional Multiple Listing Service of Minnesota, Inc Broker Reciprocity (sm) program, allowing us to display other broker's listings on our website. All properties are subject to prior sale, change or withdrawal.



Call Affinity Real Estate

218-237-3333

info@affinityrealestate.com



Affinity Real Estate - 600 Park Avenue South - Park Rapids MN 56470

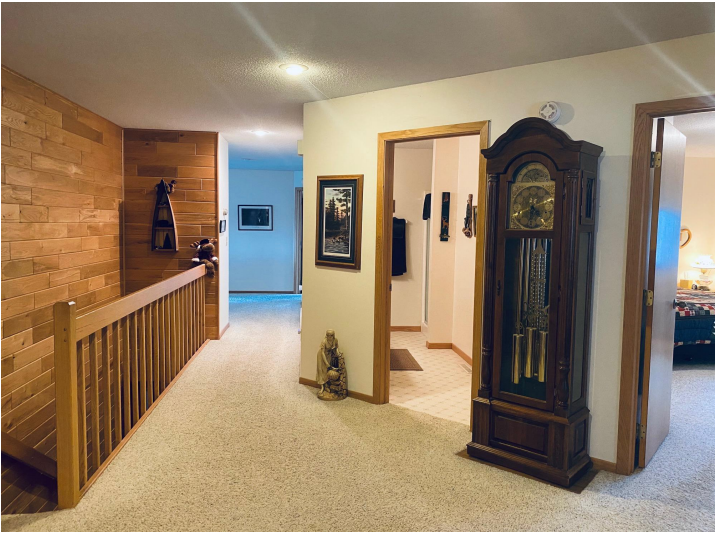


website: www.AffinityRealEstate.com | email: info@affinityrealestate.com | office: 218-237-3333 | fax: 218-237-3377

Affinity
REAL ESTATE INC

\$949,000

MLS 6516711 Lake Home
25006 Great Pine Drive
Nevis MN 56467



website: www.AffinityRealEstate.com | email: info@affinityrealestate.com | office: 218-237-3333 | fax: 218-237-3377

Affinity
REAL ESTATE INC

\$949,000

MLS 6516711 Lake Home
25006 Great Pine Drive
Nevis MN 56467



website: www.AffinityRealEstate.com | email: info@affinityrealestate.com | office: 218-237-3333 | fax: 218-237-3377

Affinity
REAL ESTATE INC

\$949,000
MLS 6516711 Lake Home
25006 Great Pine Drive
Nevis MN 56467



website: www.AffinityRealEstate.com | email: info@affinityrealestate.com | office: 218-237-3333 | fax: 218-237-3377

Affinity
REAL ESTATE INC

\$949,000
MLS 6516711 Lake Home
25006 Great Pine Drive
Nevis MN 56467



website: www.AffinityRealEstate.com | email: info@affinityrealestate.com | office: 218-237-3333 | fax: 218-237-3377



\$949,000
MLS 6516711 Lake Home
25006 Great Pine Drive
Nevis MN 56467



website: www.AffinityRealEstate.com | email: info@affinityrealestate.com | office: 218-237-3333 | fax: 218-237-3377



\$949,000
 MLS 6516711 Lake Home
 25006 Great Pine Drive
 Nevis MN 56467



website: www.AffinityRealEstate.com | email: info@affinityrealestate.com | office: 218-237-3333 | fax: 218-237-3377



\$949,000

MLS 6516711 Lake Home
25006 Great Pine Drive
Nevis MN 56467



website: www.AffinityRealEstate.com | email: info@affinityrealestate.com | office: 218-237-3333 | fax: 218-237-3377



\$949,000

MLS 6516711 Lake Home
25006 Great Pine Drive
Nevis MN 56467



website: www.AffinityRealEstate.com | email: info@affinityrealestate.com | office: 218-237-3333 | fax: 218-237-3377



\$949,000
 MLS 6516711 Lake Home
 25006 Great Pine Drive
 Nevis MN 56467



website: www.AffinityRealEstate.com | email: info@affinityrealestate.com | office: 218-237-3333 | fax: 218-237-3377

Affinity
REAL ESTATE INC

\$949,000

MLS 6516711 Lake Home
25006 Great Pine Drive
Nevis MN 56467



website: www.AffinityRealEstate.com | email: info@affinityrealestate.com | office: 218-237-3333 | fax: 218-237-3377



\$949,000

MLS 6516711 Lake Home
25006 Great Pine Drive
Nevis MN 56467