



MLS 6517040 Lake Home

**\$1,149,900**

4,601 sq ft  
4 bedrooms  
5 baths

21574 Hedgerow Lane  
Nevis MN 56467

Waterfront: Ojibway

Status: Active

#### Description:

This exceptionally well-crafted, CUSTOM-BUILT LOG HOME is on beautiful Ojibway Lake in Nevis, MN. Upon entering this MAGNIFICENT home, you are greeted with EXPANSIVE VIEWS of the lake, boasting four SPACIOUS bedrooms, four LUXURIOUS bathrooms, and over 4,600 sq ft of elegant living space. The home is adorned with exquisite AUSTRALIAN CYPRESS hardwood floors. It features two magnificent CUSTOM-BUILT fireplace handcrafted with local Field Stone, Custom Cabinets, Stainless Steel Appliances, a game room, and MUCH MORE! This home is situated just minutes away from HUNDREDS of miles of trails that are used for snowmobiling, hiking, snow-skiing, off-road vehicles, 4-wheelers, and public hunting land courtesy of the Paul Bunyan State Forest, which boasts over 105,000 acres. You can also enjoy EXCELLENT local restaurants, taverns, and shops nearby!

#### Additional Details:

Year Built	2000
Lot Acres	1.64
Lot Dimensions	155x495x151x437
Garage Stalls	3
School District	308
Taxes	\$5,726
Taxes with Assessments	\$5,936
Tax Year	2024

#### Additional Features:

**Fuel:** Electric, Propane **Heat:** Forced Air, Fireplace(s), Radiant Floor

#### Driving Directions:

From 34/71 in Park Rapids, East on 34 to County Road 50, turn right onto County 50, turn right onto Co Hwy 40/County 40 and continue on 225th Ave. Take Heartland Dr. to Hedgerow Lane.



Listed By:  
Wolff & Simon Real Estate

Affinity Real Estate Inc. participates in the Regional Multiple Listing Service of Minnesota, Inc Broker Reciprocity (sm) program, allowing us to display other broker's listings on our website. All properties are subject to prior sale, change or withdrawal.



Call Affinity Real Estate

**218-237-3333**

[info@affinityrealestate.com](mailto:info@affinityrealestate.com)



Affinity Real Estate - 600 Park Avenue South - Park Rapids MN 56470





website: [www.AffinityRealEstate.com](http://www.AffinityRealEstate.com) | email: [info@affinityrealestate.com](mailto:info@affinityrealestate.com) | office: 218-237-3333 | fax: 218-237-3377

**Affinity**  
REAL ESTATE INC

**\$1,149,900**

MLS 6517040 Lake Home  
21574 Hedgerow Lane  
Nevis MN 56467





website: [www.AffinityRealEstate.com](http://www.AffinityRealEstate.com) | email: [info@affinityrealestate.com](mailto:info@affinityrealestate.com) | office: 218-237-3333 | fax: 218-237-3377

**Affinity**  
REAL ESTATE INC

**\$1,149,900**  
MLS 6517040 Lake Home  
21574 Hedgerow Lane  
Nevis MN 56467





website: [www.AffinityRealEstate.com](http://www.AffinityRealEstate.com) | email: [info@affinityrealestate.com](mailto:info@affinityrealestate.com) | office: 218-237-3333 | fax: 218-237-3377

**Affinity**  
REAL ESTATE INC

**\$1,149,900**  
MLS 6517040 Lake Home  
21574 Hedgerow Lane  
Nevis MN 56467





website: [www.AffinityRealEstate.com](http://www.AffinityRealEstate.com) | email: [info@affinityrealestate.com](mailto:info@affinityrealestate.com) | office: 218-237-3333 | fax: 218-237-3377

**Affinity**  
REAL ESTATE INC

**\$1,149,900**

MLS 6517040 Lake Home  
21574 Hedgerow Lane  
Nevis MN 56467





website: [www.AffinityRealEstate.com](http://www.AffinityRealEstate.com) | email: [info@affinityrealestate.com](mailto:info@affinityrealestate.com) | office: 218-237-3333 | fax: 218-237-3377

**Affinity**  
REAL ESTATE INC

**\$1,149,900**  
MLS 6517040 Lake Home  
21574 Hedgerow Lane  
Nevis MN 56467





website: [www.AffinityRealEstate.com](http://www.AffinityRealEstate.com) | email: [info@affinityrealestate.com](mailto:info@affinityrealestate.com) | office: 218-237-3333 | fax: 218-237-3377

**Affinity**  
REAL ESTATE INC

**\$1,149,900**  
MLS 6517040 Lake Home  
21574 Hedgerow Lane  
Nevis MN 56467





website: [www.AffinityRealEstate.com](http://www.AffinityRealEstate.com) | email: [info@affinityrealestate.com](mailto:info@affinityrealestate.com) | office: 218-237-3333 | fax: 218-237-3377



**\$1,149,900**  
 MLS 6517040 Lake Home  
 21574 Hedgerow Lane  
 Nevis MN 56467





website: [www.AffinityRealEstate.com](http://www.AffinityRealEstate.com) | email: [info@affinityrealestate.com](mailto:info@affinityrealestate.com) | office: 218-237-3333 | fax: 218-237-3377

**Affinity**  
REAL ESTATE INC

**\$1,149,900**

MLS 6517040 Lake Home  
21574 Hedgerow Lane  
Nevis MN 56467





**"We are ready to sell!"**

**Custom-built log home on  
Ojibway Lake!**



21574 Hedgerow Lane

Australian Cypress  
Hardwood Floors



Custom Built  
Spiral Staircase



**Custom Built finishes  
Throughout the home!**



Custom Built  
Split Stone  
Fireplace



Footprint Stamps  
in Gameroom  
Cement



**4,600 sq ft of living space  
4 Spacious Bedrooms  
3 Luxurious Bathrooms  
Spectacular Views!**



**Locally  
Sourced  
Custom Built  
Split Stone  
Fire place**



**Gameroom  
Custom Built  
Fire place**

website: [www.AffinityRealEstate.com](http://www.AffinityRealEstate.com) | email: [info@affinityrealestate.com](mailto:info@affinityrealestate.com) | office: 218-237-3333 | fax: 218-237-3377

**Affinity**  
REAL ESTATE INC

**\$1,149,900**

MLS 6517040 Lake Home  
21574 Hedgerow Lane  
Nevis MN 56467





Australian  
Cypress  
hardwood  
floors



Game Room  
Cement  
Floors with  
Stamped  
Animal  
Tracks



Custom Built  
Wood Spiral  
Staircase



Custom Built  
Entry Gate & Split Rail Fence

## All Within 20 Miles!

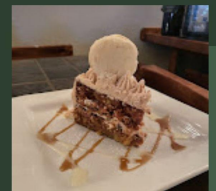
## Golf Courses



Head Waters  
Tianna  
Bears Den  
Blueberry Pines  
Eagle View  
Long Bow  
Sand Trap  
Brookside



## Entertainment & Food nearby!



Nevis

Walker

Dorset

Park Rapids

Akeley



website: [www.AffinityRealEstate.com](http://www.AffinityRealEstate.com) | email: [info@affinityrealestate.com](mailto:info@affinityrealestate.com) | office: 218-237-3333 | fax: 218-237-3377

**Affinity**  
REAL ESTATE INC

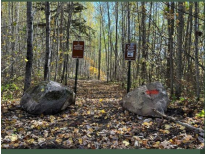
**\$1,149,900**

MLS 6517040 Lake Home  
21574 Hedgerow Lane  
Nevis MN 56467

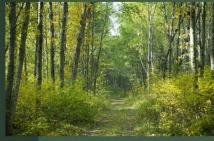


## Paul Bunyan

## State Forest

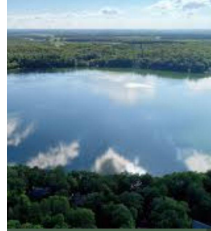


- x-county skiing
- 18 miles hiking
- 37 miles class 1 ATV
- 37 miles class 2 ATV
- 87 miles off-highway
- 60 miles snowmobiling



## Hundreds of Lakes in a 20 miles radius!

## Local Lakes



### Popular Lakes Near by:

Ojibway  
Mantrap  
Belle Taine  
Big Sand & Little Sand  
Upper & Lower Bottle  
Potato  
Long Lake  
Boulder



ID: 29014900  
County: [Hubbard](#)  
Near: Deer Lane  
Border water: No  
Sentinel Lake: No

#### Size and depth

Area: 184.06 acres  
Littoral Area<sup>®</sup>: 132.5 acres  
Shore length: 3.29 miles  
Maximum depth: 22 feet

Fish species: black crappie, bluegill, largemouth bass, northern pike, pumpkinseed, yellow bullhead, yellow perch

### Ojibway Lake

Ojibway Lake is located in south-central Hubbard County. Ojibway has a surface area of 184 acres and a maximum depth of 22 feet. There is a state-owned public access located on the southwest shore of the lake. Ojibway is connected to Dead Lake by a small channel. Boating between the two lakes is dependent upon water levels in the lakes. Ojibway has excellent water quality and clarity, and supports good populations of Largemouth Bass, Northern Pike, and panfish.

Ojibway supports a healthy Largemouth Bass population both in numbers and size. Anglers will find good numbers of Largemouth Bass in the 12 to 16 inch size range and bass up to 19.7 inches were sampled during the survey. Good water quality, aquatic vegetation cover, and spawning substrate provide excellent habitat for Largemouth Bass in Ojibway. Present and past surveys have shown the panfish population in Ojibway to fluctuate from moderate to high numbers and can provide good fishing for Black Crappie, Bluegill, and Pumpkinseed. The panfish population in Ojibway is known more for numbers than size of fish. Anglers will find Black Crappie in the 9-11 inch size range, and Bluegill and Pumpkinseed in the 6-7 inch size range. Northern Pike are abundant in Ojibway with the population dominated by small, "hammer handle" pike. Sampled Northern Pike had an average length and weight of 19.6 inches and 1.5 pounds, with pike measured up to 30.9 inches.

Currently no aquatic invasive species (AIS) have been identified in Ojibway. To avoid spreading AIS, lake users are required to remove all aquatic plants or animals from their watercraft and drain all water from their boats before leaving the lake.

website: [www.AffinityRealEstate.com](http://www.AffinityRealEstate.com) | email: [info@affinityrealestate.com](mailto:info@affinityrealestate.com) | office: 218-237-3333 | fax: 218-237-3377



**\$1,149,900**

MLS 6517040 Lake Home  
21574 Hedgerow Lane  
Nevis MN 56467