



MLS 6517539 Commercial Sale

**\$101,500**

**Description:**

**OWN YOUR STORAGE UNIT!**

New Unit #15

40 x 40 storage unit conveniently located between US Highway 59 & Co Highway 17 along South Melissa Drive. Great location less than a mile from Lake Melissa and Seven Sisters Spirits!

South Melissa Storage Construction Specs: post type building, 3 Ply Columns, 2x6 – 8' OC, factory engineered trusses 4' OC (42-4-6 loading), 14' sidewalls with vaulted interior ceiling approx. 16'-8" at center, high tensile steel exterior, 24" soffit system w/ vented ridge, 12 foot high by 14 foot wide over head garage door w/ opener, (1) 3' service door, 4" concrete floor w/ center drain, 2x8 treated skirt board, 2x12 double top plate, 2x4 roof purlins 24" OC.

**Additional Details:**

Year Built	2024
Lot Acres	0.71
Lot Dimensions	.71
Garage Stalls	2
School District	22
Taxes	\$70
Taxes with Assessments	\$70
Tax Year	2024

**Additional Features:**

**Fuel:** Other **Garage:** 2 **Heat:** Other **Sewer:** None **Water:** None

**Driving Directions:**

From Detroit Lakes head South on Hwy 59 to S Melissa Dr. Property is on the corner.



Listed By:  
Counselor Realty of Detroit Lakes

Affinity Real Estate Inc. participates in the Regional Multiple Listing Service of Minnesota, Inc Broker Reciprocity (sm) program, allowing us to display other broker's listings on our website. All properties are subject to prior sale, change or withdrawal.



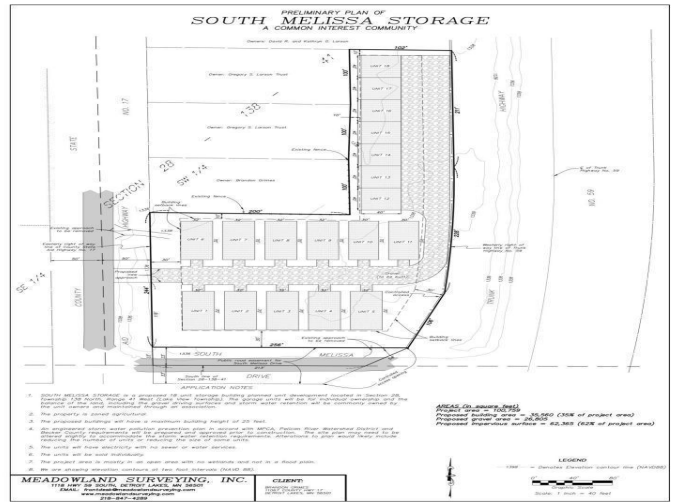
**Call Affinity Real Estate**

**218-237-3333**

**info@affinityrealestate.com**



**Affinity Real Estate - 600 Park Avenue South - Park Rapids MN 56470**



website: [www.AffinityRealEstate.com](http://www.AffinityRealEstate.com) | email: [info@affinityrealestate.com](mailto:info@affinityrealestate.com) | office: 218-237-3333 | fax: 218-237-3377



**\$101,500**  
 MLS 6517539 Commercial  
 Sale  
 25296 Melissa Drive  
 Detroit Lakes MN 56501