



MLS 6517573 Lake Land

\$250,000

Description:

Serene Lakeside Haven: Dive into tranquility with this picturesque lakefront lot, offering a rare opportunity to own a slice of waterfront paradise. Nestled on the shores of Rock Lake, this prime piece of real estate spans over 4 acres of unspoiled beauty, boasting 218 feet of pristine shoreline. Seize this opportunity to build your legacy and create memories that will last a lifetime.

Additional Details:

Lot Acres	4.33
Lot Dimensions	182 x 1094
School District	22
Taxes	(unreported)
Taxes with Assessments	(unreported)
Tax Year	2024

Additional Features:

Driving Directions:



Listed By:
Next Level Real Estate

Affinity Real Estate Inc. participates in the Regional Multiple Listing Service of Minnesota, Inc Broker Reciprocity (sm) program, allowing us to display other broker's listings on our website. All properties are subject to prior sale, change or withdrawal.



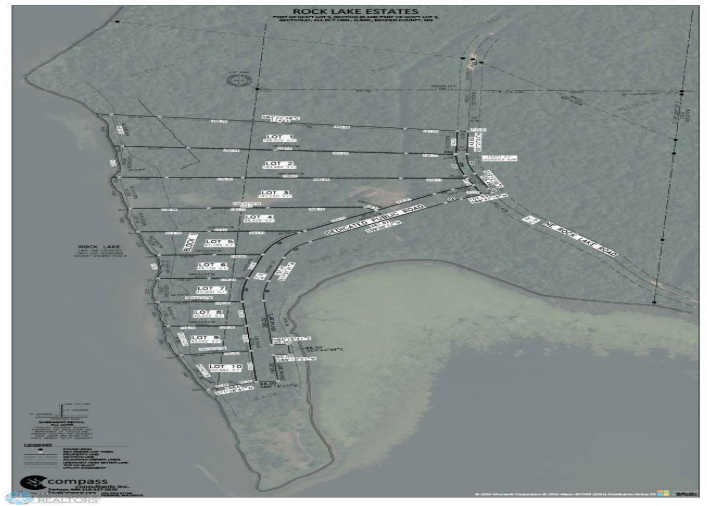
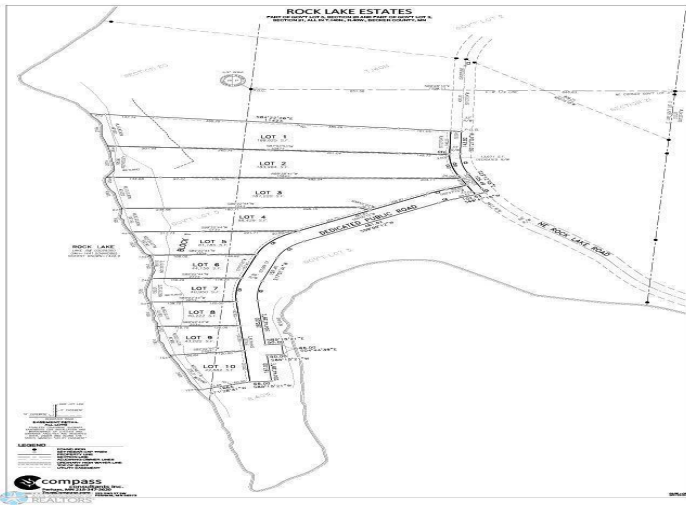
Call Affinity Real Estate

218-237-3333

info@affinityrealestate.com



Affinity Real Estate - 600 Park Avenue South - Park Rapids MN 56470



website: www.AffinityRealEstate.com | email: info@affinityrealestate.com | office: 218-237-3333 | fax:218-237-3377



\$250,000
 MLS 6517573 Lake Land
 Lot1 Rock Lake E
 Rochert MN 56578