



MLS 6518202 Lake Home

**\$239,900**

864 sq ft  
3 bedrooms  
1 baths

23604 Great Ridge Trail  
Park Rapids MN 56470

Waterfront: Potato

Status: Active

#### Description:

Experience pristine lake living in this immaculate and meticulously maintained 3-bedroom year round cabin, boasting stunning views of Potato Lake. Recently upgraded with a brand new concrete driveway, fresh paint adorning the exterior, new front entry door, new ceiling fans, new lighting fixtures and new appliances this property exudes charm and modernity. Enjoy the ultimate in lakeside leisure with access to incredible shared amenities, including 500 feet of sandy lakeshore, an inviting indoor pool, rejuvenating sauna, outdoor play area and volleyball court. Whether you're seeking relaxation or adventure, this cabin offers the perfect retreat. Furnishings are available for purchase outside of the real estate sale. Don't miss out on this rare opportunity to own a slice of paradise!

#### Additional Details:

Year Built	1990
Lot Acres	0.06
Lot Dimensions	80 x 70
School District	309
Taxes	\$1,394
Taxes with Assessments	\$1,604
Tax Year	2024

#### Additional Features:

**Fuel:** Electric, Propane **Heat:** Ductless Mini-Split, Radiant Floor

#### Driving Directions:

From Hwys. 71/34 in Park Rapids, Go N on Hwy 71 to a right on 230th. Left on 141st to a right on Gazebo Drive. Follow to a left on Great Ridge Trail, right to #23604.



Listed By:  
Coldwell Banker Crown Realtors

Affinity Real Estate Inc. participates in the Regional Multiple Listing Service of Minnesota, Inc Broker Reciprocity (sm) program, allowing us to display other broker's listings on our website. All properties are subject to prior sale, change or withdrawal.



**Call Affinity Real Estate**

**218-237-3333**

**info@affinityrealestate.com**



**Affinity Real Estate - 600 Park Avenue South - Park Rapids MN 56470**





website: [www.AffinityRealEstate.com](http://www.AffinityRealEstate.com) | email: [info@affinityrealestate.com](mailto:info@affinityrealestate.com) | office: 218-237-3333 | fax: 218-237-3377



**\$239,900**  
 MLS 6518202 Lake Home  
 23604 Great Ridge Trail  
 Park Rapids MN 56470





website: [www.AffinityRealEstate.com](http://www.AffinityRealEstate.com) | email: [info@affinityrealestate.com](mailto:info@affinityrealestate.com) | office: 218-237-3333 | fax: 218-237-3377

**Affinity**  
REAL ESTATE INC

**\$239,900**  
MLS 6518202 Lake Home  
23604 Great Ridge Trail  
Park Rapids MN 56470





website: [www.AffinityRealEstate.com](http://www.AffinityRealEstate.com) | email: [info@affinityrealestate.com](mailto:info@affinityrealestate.com) | office: 218-237-3333 | fax: 218-237-3377

**Affinity**  
REAL ESTATE INC

**\$239,900**  
MLS 6518202 Lake Home  
23604 Great Ridge Trail  
Park Rapids MN 56470





website: [www.AffinityRealEstate.com](http://www.AffinityRealEstate.com) | email: [info@affinityrealestate.com](mailto:info@affinityrealestate.com) | office: 218-237-3333 | fax: 218-237-3377

**Affinity**  
REAL ESTATE INC

**\$239,900**  
MLS 6518202 Lake Home  
23604 Great Ridge Trail  
Park Rapids MN 56470





website: [www.AffinityRealEstate.com](http://www.AffinityRealEstate.com) | email: [info@affinityrealestate.com](mailto:info@affinityrealestate.com) | office: 218-237-3333 | fax: 218-237-3377

**Affinity**  
REAL ESTATE INC

**\$239,900**  
MLS 6518202 Lake Home  
23604 Great Ridge Trail  
Park Rapids MN 56470



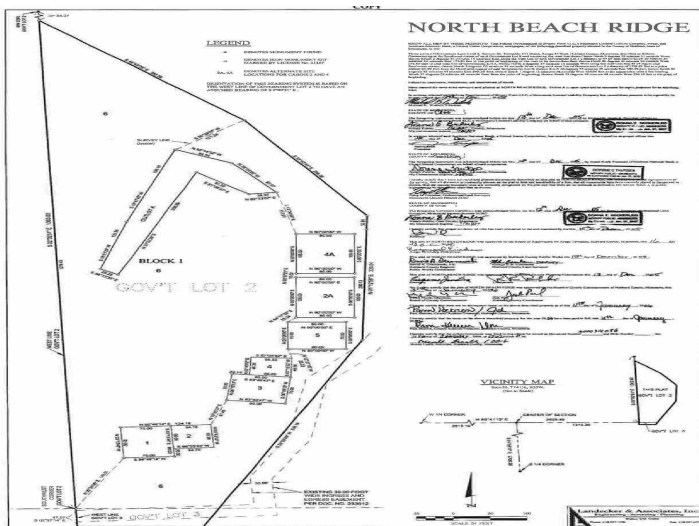


website: [www.AffinityRealEstate.com](http://www.AffinityRealEstate.com) | email: [info@affinityrealestate.com](mailto:info@affinityrealestate.com) | office: 218-237-3333 | fax: 218-237-3377



**\$239,900**  
MLS 6518202 Lake Home  
23604 Great Ridge Trail  
Park Rapids MN 56470





website: [www.AffinityRealEstate.com](http://www.AffinityRealEstate.com) | email: [info@affinityrealestate.com](mailto:info@affinityrealestate.com) | office: 218-237-3333 | fax:218-237-3377



**\$239,900**

MLS 6518202 Lake Home  
23604 Great Ridge Trail  
Park Rapids MN 56470