



MLS 6518292 Lake Land

**\$250,000**

**Description:**

Serene Lakeside Haven: Dive into tranquility with this picturesque lakefront lot, offering a rare opportunity to own a slice of waterfront paradise. Nestled on the shores of Rock Lake, this prime piece of real estate spans over 4 acres of unspoiled beauty, boasting 207 feet of pristine shoreline. Seize this opportunity to build your legacy and create memories that will last a lifetime.

**Additional Details:**

|                        |              |
|------------------------|--------------|
| Lot Acres              | 4.22         |
| Lot Dimensions         | 200 x 1065   |
| School District        | 22           |
| Taxes                  | (unreported) |
| Taxes with Assessments | (unreported) |
| Tax Year               | 2024         |

**Additional Features:**

**Driving Directions:**



Listed By:  
Next Level Real Estate

Affinity Real Estate Inc. participates in the Regional Multiple Listing Service of Minnesota, Inc Broker Reciprocity (sm) program, allowing us to display other broker's listings on our website. All properties are subject to prior sale, change or withdrawal.



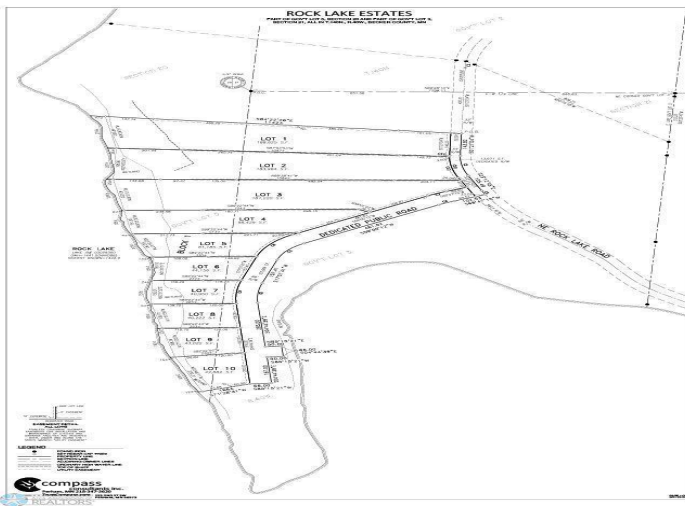
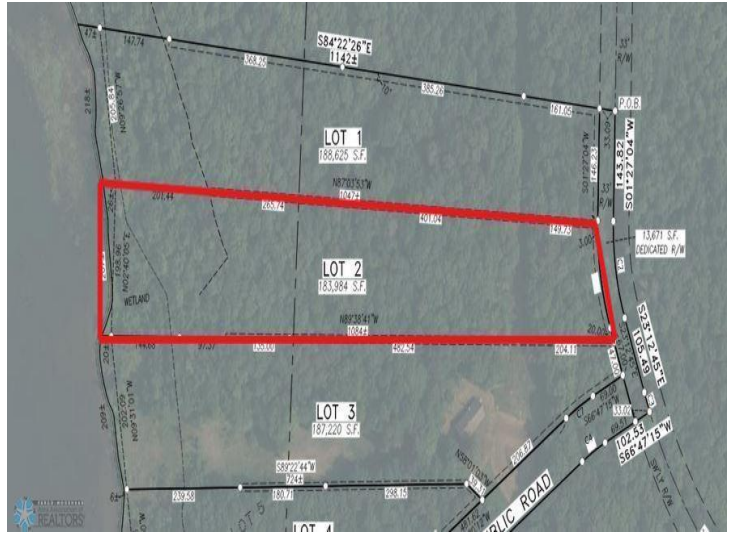
**Call Affinity Real Estate**

**218-237-3333**

**info@affinityrealestate.com**



**Affinity Real Estate - 600 Park Avenue South - Park Rapids MN 56470**



website: [www.AffinityRealEstate.com](http://www.AffinityRealEstate.com) | email: [info@affinityrealestate.com](mailto:info@affinityrealestate.com) | office: 218-237-3333 | fax:218-237-3377



**\$250,000**  
 MLS 6518292 Lake Land  
 Lot2 Rock Lake E  
 Rochert MN 56578