



MLS 6518323 Lake Land

\$79,900

Description:

2.15 - acre lot on beautiful Shipman Lake, just minutes from Park Rapids. Perfect for building your dream home or peaceful weekend getaways -- enjoying boating, fishing, kayaking from your own lakeshore property. Call Today!

Additional Details:

Lot Acres	2.15
Lot Dimensions	Irregular
School District	309
Taxes	\$436
Taxes with Assessments	\$436
Tax Year	2024

Additional Features:

Driving Directions:

From Hwys. 71/34 in Park Rapids, Go 3 miles south on Hwy 71 to West on Cty Rd 14 for 7 miles to left on Green Valley Drive. Follow to property on Cul-De-Sac.



Listed By:
Coldwell Banker Crown Realtors

Affinity Real Estate Inc. participates in the Regional Multiple Listing Service of Minnesota, Inc Broker Reciprocity (sm) program, allowing us to display other broker's listings on our website. All properties are subject to prior sale, change or withdrawal.



Call Affinity Real Estate

218-237-3333

info@affinityrealestate.com



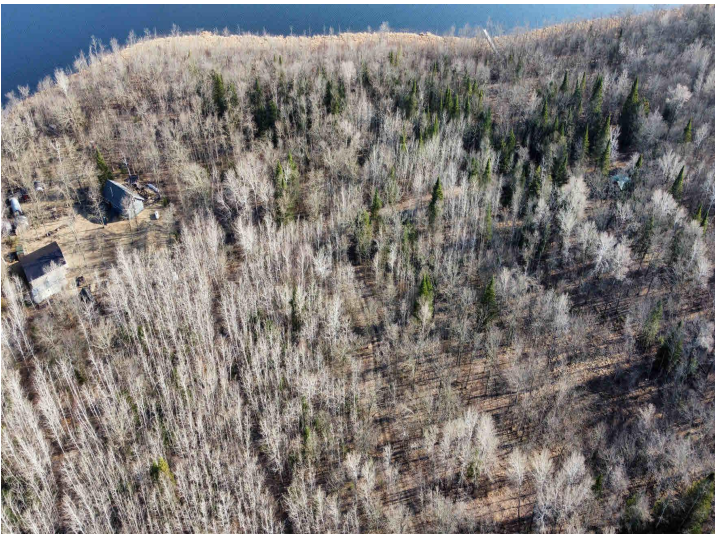
Affinity Real Estate - 600 Park Avenue South - Park Rapids MN 56470



website: www.AffinityRealEstate.com | email: info@affinityrealestate.com | office: 218-237-3333 | fax: 218-237-3377



\$79,900
MLS 6518323 Lake Land
TBD Green Valley Drive
Park Rapids MN 56470

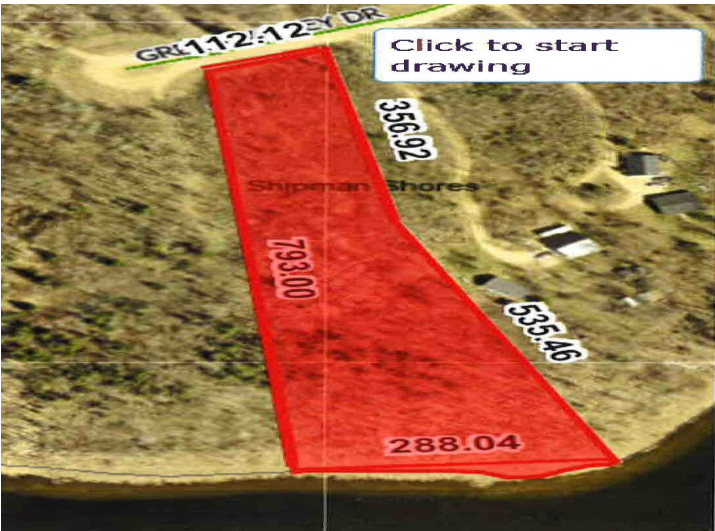


website: www.AffinityRealEstate.com | email: info@affinityrealestate.com | office: 218-237-3333 | fax: 218-237-3377



\$79,900

MLS 6518323 Lake Land
TBD Green Valley Drive
Park Rapids MN 56470



website: www.AffinityRealEstate.com | email: info@affinityrealestate.com | office: 218-237-3333 | fax: 218-237-3377



\$79,900

MLS 6518323 Lake Land
TBD Green Valley Drive
Park Rapids MN 56470