



MLS 6519077 Lake Home

**\$949,999**

1,600 sq ft  
5 bedrooms  
1 baths

20250 Jewel Drive  
Park Rapids MN 56470

Waterfront: Bad Axe

Status: Active

#### Description:

This extraordinary up-north haven embodies luxury and seclusion, boasting approximately 55 acres of pristine wilderness and around 2000 feet of secluded shoreline on an exclusive lake with no public access. This property offers an abundance of outdoor activities, ranging from hunting and hiking to fishing in the pristine waters of Bad Axe Lake and the neighboring Mantrap chain of lakes.

Conveniently located close to Park Rapids, residents can also enjoy a variety of dining and shopping options, adding a touch of convenience to this secluded paradise. Indulge in gourmet cuisine or browse charming boutiques, all within easy reach of your private retreat.

Escape to this secluded paradise and revel in the beauty of the great outdoors at its most refined, with all the comforts and amenities you desire. Schedule your showing today and experience the serenity of this remarkable property firsthand.

#### Additional Details:

Year Built	1983
Lot Acres	55
Lot Dimensions	Irregular
Garage Stalls	1
School District	309
Taxes	\$3,360
Taxes with Assessments	\$3,570
Tax Year	2024

#### Additional Features:

**Fuel:** Electric **Heat:** Baseboard

#### Driving Directions:

From Hwys. 71/34 in Park Rapids. East on Hwy 34 to Co. Rd. 4. North on Co. 4 to Emmaville. Then East on County 24 to County 104 (Jewel Dr.). Left on 104 approx. 1 miles to the property on the left.



Listed By:  
Coldwell Banker Realty

Affinity Real Estate Inc. participates in the Regional Multiple Listing Service of Minnesota, Inc Broker Reciprocity (sm) program, allowing us to display other broker's listings on our website. All properties are subject to prior sale, change or withdrawal.



**Call Affinity Real Estate**

**218-237-3333**

**info@affinityrealestate.com**



**Affinity Real Estate - 600 Park Avenue South - Park Rapids MN 56470**





website: [www.AffinityRealEstate.com](http://www.AffinityRealEstate.com) | email: [info@affinityrealestate.com](mailto:info@affinityrealestate.com) | office: 218-237-3333 | fax: 218-237-3377

**Affinity**  
REAL ESTATE INC

**\$949,999**

MLS 6519077 Lake Home  
20250 Jewel Drive  
Park Rapids MN 56470





website: [www.AffinityRealEstate.com](http://www.AffinityRealEstate.com) | email: [info@affinityrealestate.com](mailto:info@affinityrealestate.com) | office: 218-237-3333 | fax: 218-237-3377

**Affinity**  
REAL ESTATE INC

**\$949,999**  
MLS 6519077 Lake Home  
20250 Jewel Drive  
Park Rapids MN 56470





website: [www.AffinityRealEstate.com](http://www.AffinityRealEstate.com) | email: [info@affinityrealestate.com](mailto:info@affinityrealestate.com) | office: 218-237-3333 | fax: 218-237-3377

**Affinity**  
REAL ESTATE INC

**\$949,999**  
MLS 6519077 Lake Home  
20250 Jewel Drive  
Park Rapids MN 56470





website: [www.AffinityRealEstate.com](http://www.AffinityRealEstate.com) | email: [info@affinityrealestate.com](mailto:info@affinityrealestate.com) | office: 218-237-3333 | fax: 218-237-3377



**\$949,999**  
MLS 6519077 Lake Home  
20250 Jewel Drive  
Park Rapids MN 56470





website: [www.AffinityRealEstate.com](http://www.AffinityRealEstate.com) | email: [info@affinityrealestate.com](mailto:info@affinityrealestate.com) | office: 218-237-3333 | fax: 218-237-3377

**Affinity**  
REAL ESTATE INC

**\$949,999**  
MLS 6519077 Lake Home  
20250 Jewel Drive  
Park Rapids MN 56470





website: [www.AffinityRealEstate.com](http://www.AffinityRealEstate.com) | email: [info@affinityrealestate.com](mailto:info@affinityrealestate.com) | office: 218-237-3333 | fax: 218-237-3377



**\$949,999**  
 MLS 6519077 Lake Home  
 20250 Jewel Drive  
 Park Rapids MN 56470





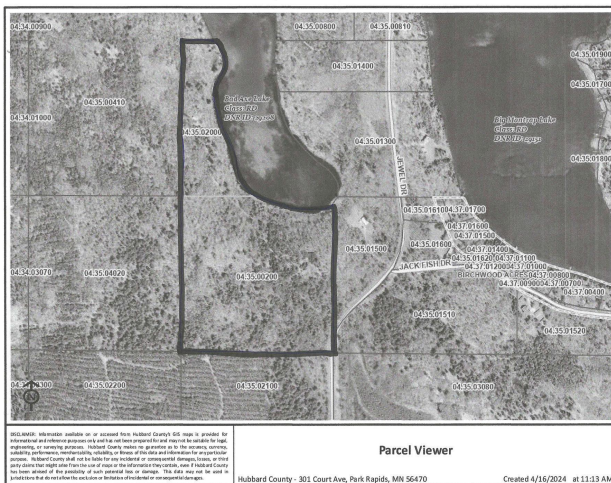
website: [www.AffinityRealEstate.com](http://www.AffinityRealEstate.com) | email: [info@affinityrealestate.com](mailto:info@affinityrealestate.com) | office: 218-237-3333 | fax: 218-237-3377



**\$949,999**

MLS 6519077 Lake Home  
20250 Jewel Drive  
Park Rapids MN 56470





website: [www.AffinityRealEstate.com](http://www.AffinityRealEstate.com) | email: [info@affinityrealestate.com](mailto:info@affinityrealestate.com) | office: 218-237-3333 | fax: 218-237-3377

**Affinity**  
REAL ESTATE INC

**\$949,999**  
MLS 6519077 Lake Home  
20250 Jewel Drive  
Park Rapids MN 56470





website: [www.AffinityRealEstate.com](http://www.AffinityRealEstate.com) | email: [info@affinityrealestate.com](mailto:info@affinityrealestate.com) | office: 218-237-3333 | fax: 218-237-3377



**\$949,999**  
 MLS 6519077 Lake Home  
 20250 Jewel Drive  
 Park Rapids MN 56470





website: [www.AffinityRealEstate.com](http://www.AffinityRealEstate.com) | email: [info@affinityrealestate.com](mailto:info@affinityrealestate.com) | office: 218-237-3333 | fax: 218-237-3377



**\$949,999**  
MLS 6519077 Lake Home  
20250 Jewel Drive  
Park Rapids MN 56470