



MLS 6519113 Residential

**\$449,900**

3,400 sq ft  
4 bedrooms  
3 baths

2638 Arrowwood Circle  
Bemidji MN 56601

Status: Pending

#### Description:

Well-maintained home in an established neighborhood that sits on a large lot and boasts a remodeled kitchen w/stainless appliances, hard surface countertops, a wine fridge, and pantry. The kitchen is in the center of the home and is open to the dining area and living room. The main floor also has the primary suite w/a large full bathroom, laundry room, another full bathroom, and two more bedrooms along w/a four-season porch (includes the hot tub!!). Downstairs consists of ample storage and not one, but two family rooms (one with a fireplace), another bedroom, another full bath, and a flex room! There is a double attached AND double detached garage (w/a separate paved drive), cement patio, steel siding, storage building, fire pit, programmable & zoned sprinklers, Kinetico water treatment system, water conditioner and reverse osmosis system for drinking water in the kitchen sink and the fridge icemaker! This home has quick access to both the north and south sides of town.

#### Additional Details:

Year Built	1993
Lot Acres	1.29
Lot Dimensions	irregular
Garage Stalls	4
School District	31
Taxes	\$2,906
Taxes with Assessments	\$2,906
Tax Year	2024

#### Additional Features:

**Basement:** Block, Egress Window(s), Finished, Full **Fuel:** Electric, Natural Gas **Garage:** 4 **Heat:** Forced Air, Fireplace(s), Radiant Floor  
**Sewer:** Private Sewer **Water:** Private **Air Conditioning:** Central Air

#### Driving Directions:

From Division St W, north on Adams Ave NW, right on Arrowwood Circle, left on Arrowwood Circle, the property is on the left.



Listed By:  
Realty Experts, LLC

Affinity Real Estate Inc. participates in the Regional Multiple Listing Service of Minnesota, Inc Broker Reciprocity (sm) program, allowing us to display other broker's listings on our website. All properties are subject to prior sale, change or withdrawal.



Call Affinity Real Estate

**218-237-3333**

[info@affinityrealestate.com](mailto:info@affinityrealestate.com)



Affinity Real Estate - 600 Park Avenue South - Park Rapids MN 56470





website: [www.AffinityRealEstate.com](http://www.AffinityRealEstate.com) | email: [info@affinityrealestate.com](mailto:info@affinityrealestate.com) | office: 218-237-3333 | fax: 218-237-3377

**Affinity**  
REAL ESTATE INC

**\$449,900**  
MLS 6519113 Residential  
2638 Arrowwood Circle  
Bemidji MN 56601





website: [www.AffinityRealEstate.com](http://www.AffinityRealEstate.com) | email: [info@affinityrealestate.com](mailto:info@affinityrealestate.com) | office: 218-237-3333 | fax: 218-237-3377

**Affinity**  
REAL ESTATE INC

**\$449,900**  
MLS 6519113 Residential  
2638 Arrowwood Circle  
Bemidji MN 56601





website: [www.AffinityRealEstate.com](http://www.AffinityRealEstate.com) | email: [info@affinityrealestate.com](mailto:info@affinityrealestate.com) | office: 218-237-3333 | fax: 218-237-3377

**Affinity**  
REAL ESTATE INC

**\$449,900**  
MLS 6519113 Residential  
2638 Arrowwood Circle  
Bemidji MN 56601





website: [www.AffinityRealEstate.com](http://www.AffinityRealEstate.com) | email: [info@affinityrealestate.com](mailto:info@affinityrealestate.com) | office: 218-237-3333 | fax: 218-237-3377

**Affinity**  
REAL ESTATE INC

**\$449,900**  
MLS 6519113 Residential  
2638 Arrowwood Circle  
Bemidji MN 56601





website: [www.AffinityRealEstate.com](http://www.AffinityRealEstate.com) | email: [info@affinityrealestate.com](mailto:info@affinityrealestate.com) | office: 218-237-3333 | fax: 218-237-3377

**Affinity**  
REAL ESTATE INC

**\$449,900**  
MLS 6519113 Residential  
2638 Arrowwood Circle  
Bemidji MN 56601





website: [www.AffinityRealEstate.com](http://www.AffinityRealEstate.com) | email: [info@affinityrealestate.com](mailto:info@affinityrealestate.com) | office: 218-237-3333 | fax: 218-237-3377



**\$449,900**  
 MLS 6519113 Residential  
 2638 Arrowwood Circle  
 Bemidji MN 56601





website: [www.AffinityRealEstate.com](http://www.AffinityRealEstate.com) | email: [info@affinityrealestate.com](mailto:info@affinityrealestate.com) | office: 218-237-3333 | fax: 218-237-3377



**\$449,900**  
 MLS 6519113 Residential  
 2638 Arrowwood Circle  
 Bemidji MN 56601





website: [www.AffinityRealEstate.com](http://www.AffinityRealEstate.com) | email: [info@affinityrealestate.com](mailto:info@affinityrealestate.com) | office: 218-237-3333 | fax: 218-237-3377

**Affinity**  
REAL ESTATE INC

**\$449,900**  
MLS 6519113 Residential  
2638 Arrowwood Circle  
Bemidji MN 56601



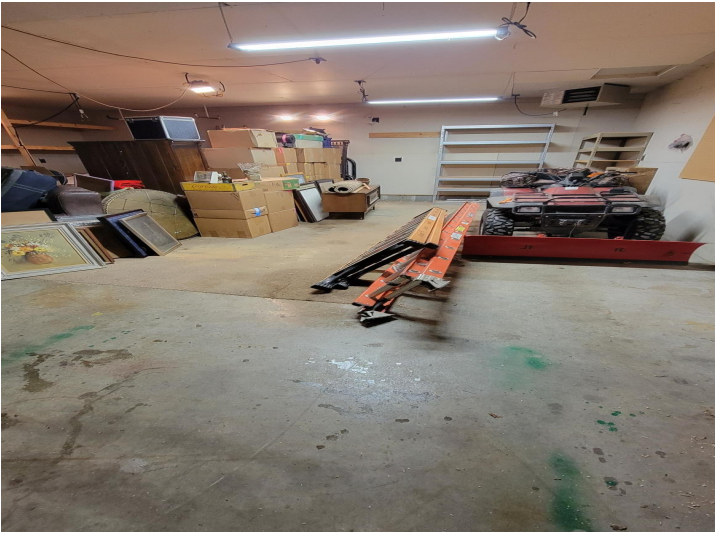


website: [www.AffinityRealEstate.com](http://www.AffinityRealEstate.com) | email: [info@affinityrealestate.com](mailto:info@affinityrealestate.com) | office: 218-237-3333 | fax: 218-237-3377

**Affinity**  
REAL ESTATE INC

**\$449,900**  
MLS 6519113 Residential  
2638 Arrowwood Circle  
Bemidji MN 56601





website: [www.AffinityRealEstate.com](http://www.AffinityRealEstate.com) | email: [info@affinityrealestate.com](mailto:info@affinityrealestate.com) | office: 218-237-3333 | fax: 218-237-3377



**\$449,900**  
 MLS 6519113 Residential  
 2638 Arrowwood Circle  
 Bemidji MN 56601