



MLS 6519179 Residential

\$349,900

2,518 sq ft
5 bedrooms
3 baths

1003 Balsam Lane
Park Rapids MN 56470

Status: Pending

Description:

This spacious 5-bedroom, 3-bathroom home features a covered front porch, a back patio with an outdoor kitchen with a TV option, and a pergola with a fire pit. The main level offers vaulted wood ceilings, wood floors, a master suite, two additional bedrooms and a deck overlooking the back yard. The lower level includes two more bedrooms, a gas fireplace, large family room, a bathroom, along with a walk-out with a covered patio to the backyard. Enjoy the convenience of a large laundry room with storage. This back yard set up is ideal for both comfortable living and entertaining. The double attached garage is insulated and heated.

Additional Details:

| | |
|------------------------|-----------|
| Year Built | 2002 |
| Lot Acres | 0.34 |
| Lot Dimensions | 100 x 150 |
| Garage Stalls | 2 |
| School District | 309 |
| Taxes | \$3,154 |
| Taxes with Assessments | \$3,364 |
| Tax Year | 2023 |

Additional Features:

Basement: Finished, Full, Walkout **Fuel:** Natural Gas **Garage:** 2 **Heat:** Forced Air, Fireplace(s) **Sewer:** City Sewer/Connected **Water:** City Water/Connected **Air Conditioning:** Central Air

Driving Directions:

Hwy 34 East to a right onto Eastern Ave. Take a left onto Balsam Lane. First property on the left.



Listed By:
Keller Williams Realty Professionals

Affinity Real Estate Inc. participates in the Regional Multiple Listing Service of Minnesota, Inc Broker Reciprocity (sm) program, allowing us to display other broker's listings on our website. All properties are subject to prior sale, change or withdrawal.



Call Affinity Real Estate

218-237-3333

info@affinityrealestate.com



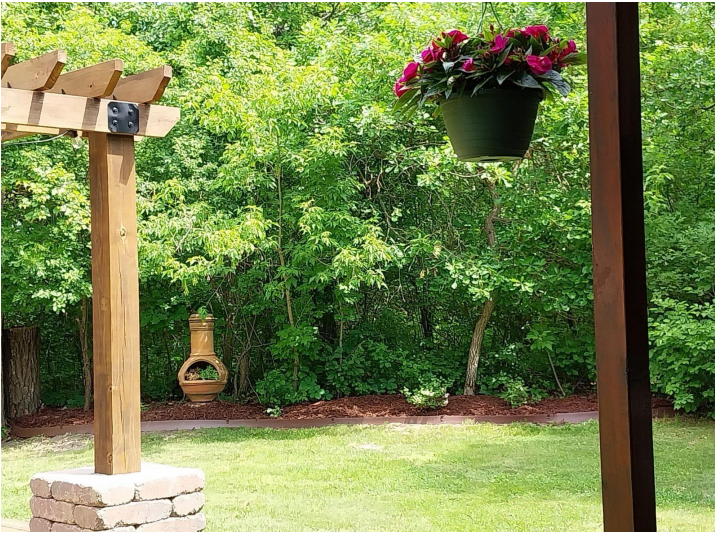
Affinity Real Estate - 600 Park Avenue South - Park Rapids MN 56470



website: www.AffinityRealEstate.com | email: info@affinityrealestate.com | office: 218-237-3333 | fax: 218-237-3377

Affinity
REAL ESTATE INC

\$349,900
MLS 6519179 Residential
1003 Balsam Lane
Park Rapids MN 56470



website: www.AffinityRealEstate.com | email: info@affinityrealestate.com | office: 218-237-3333 | fax: 218-237-3377

Affinity
REAL ESTATE INC

\$349,900
MLS 6519179 Residential
1003 Balsam Lane
Park Rapids MN 56470



website: www.AffinityRealEstate.com | email: info@affinityrealestate.com | office: 218-237-3333 | fax: 218-237-3377

Affinity
REAL ESTATE INC

\$349,900
MLS 6519179 Residential
1003 Balsam Lane
Park Rapids MN 56470



website: www.AffinityRealEstate.com | email: info@affinityrealestate.com | office: 218-237-3333 | fax: 218-237-3377

Affinity
REAL ESTATE INC

\$349,900
MLS 6519179 Residential
1003 Balsam Lane
Park Rapids MN 56470



website: www.AffinityRealEstate.com | email: info@affinityrealestate.com | office: 218-237-3333 | fax: 218-237-3377

Affinity
REAL ESTATE INC

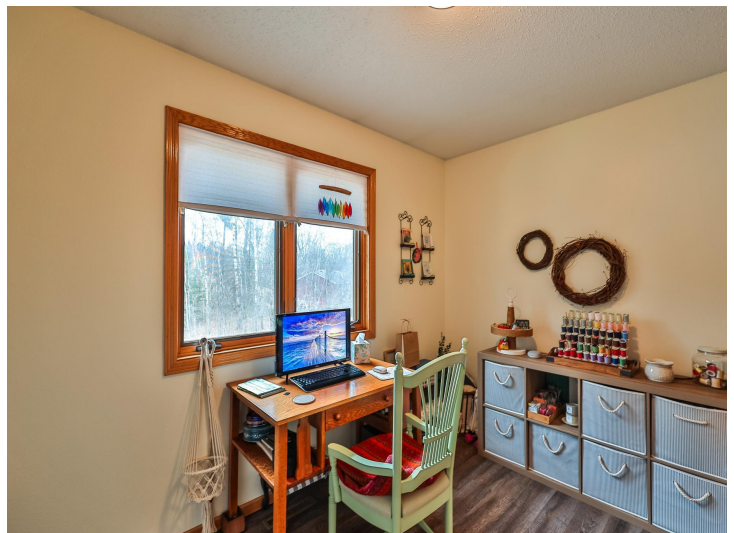
\$349,900
MLS 6519179 Residential
1003 Balsam Lane
Park Rapids MN 56470



website: www.AffinityRealEstate.com | email: info@affinityrealestate.com | office: 218-237-3333 | fax: 218-237-3377

Affinity
REAL ESTATE INC

\$349,900
MLS 6519179 Residential
1003 Balsam Lane
Park Rapids MN 56470



website: www.AffinityRealEstate.com | email: info@affinityrealestate.com | office: 218-237-3333 | fax: 218-237-3377

Affinity
REAL ESTATE INC

\$349,900
MLS 6519179 Residential
1003 Balsam Lane
Park Rapids MN 56470



website: www.AffinityRealEstate.com | email: info@affinityrealestate.com | office: 218-237-3333 | fax: 218-237-3377

Affinity
REAL ESTATE INC

\$349,900
MLS 6519179 Residential
1003 Balsam Lane
Park Rapids MN 56470



website: www.AffinityRealEstate.com | email: info@affinityrealestate.com | office: 218-237-3333 | fax: 218-237-3377

Affinity
REAL ESTATE INC

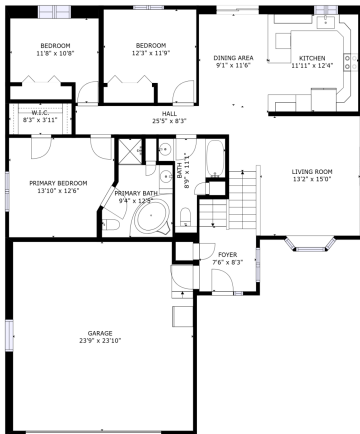
\$349,900
MLS 6519179 Residential
1003 Balsam Lane
Park Rapids MN 56470



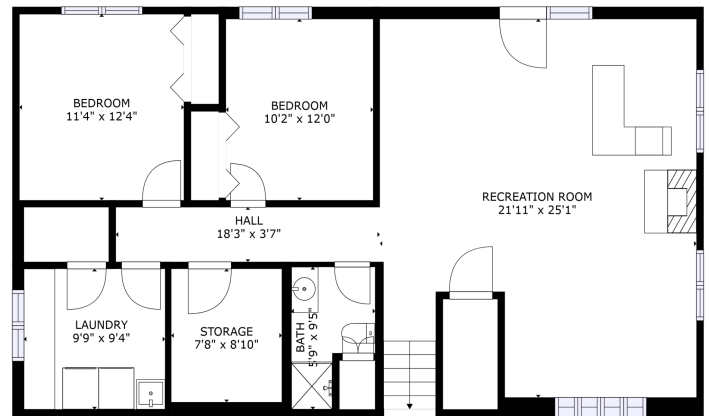
website: www.AffinityRealEstate.com | email: info@affinityrealestate.com | office: 218-237-3333 | fax: 218-237-3377



\$349,900
 MLS 6519179 Residential
 1003 Balsam Lane
 Park Rapids MN 56470



TOTAL: 2494 sq. ft.
Below Ground: 1121 sq. ft.; FLOOR 2: 1363 sq. ft.
EXCLUDED AREAS: STORAGE: 68 sq. ft.; GARAGE: 557 sq. ft.
SIZES AND DIMENSIONS ARE APPROXIMATE, ACTUAL MAY VARY.



TOTAL: 2494 sq. ft.
Below Ground: 1121 sq. ft.; FLOOR 2: 1363 sq. ft.
EXCLUDED AREAS: STORAGE: 68 sq. ft.; GARAGE: 557 sq. ft.
SIZES AND DIMENSIONS ARE APPROXIMATE, ACTUAL MAY VARY.



website: www.AffinityRealEstate.com | email: info@affinityrealestate.com | office: 218-237-3333 | fax: 218-237-3377



\$349,900
MLS 6519179 Residential
1003 Balsam Lane
Park Rapids MN 56470