



MLS 6519837 Land

\$389,000

100 Acres
Raw Land

62772 440th Street
Wadena MN 56482

Status: Active



Description:

100+/- acres of mixed vacant land near Sebeka and Wadena!

Mostly farm and pasture land great for hunting and building locations. If you are looking to start a hobby farm, grow your land investments, or simply enjoy the country farm life this property is a great option. The Blue Creek runs through part of the property.

This listing is for parcels C, D, & E on the parcel drawing and includes land only with no buildings. Parcel A on the map 9+/- acres of wooded land is available on a separate listing. More information and photos will be posted. Seller will consider other splits on this property.

Additional Details:

Lot Acres	100
Lot Dimensions	100 +/- acres
School District	820
Taxes	\$2,174
Taxes with Assessments	\$2,304
Tax Year	2023

Additional Features:

Driving Directions:

From Sebeka go West on Co Hwy 8/280th st. for 4 miles, turn left and head South on Co Hwy 75 go 2 miles and turn right on 440th st. to the property on the left side. Property has access from 440th st and Co Hwy 75.



Listed By:
Counselor Realty of Detroit Lakes

Affinity Real Estate Inc. participates in the Regional Multiple Listing Service of Minnesota, Inc Broker Reciprocity (sm) program, allowing us to display other broker's listings on our website. All properties are subject to prior sale, change or withdrawal.



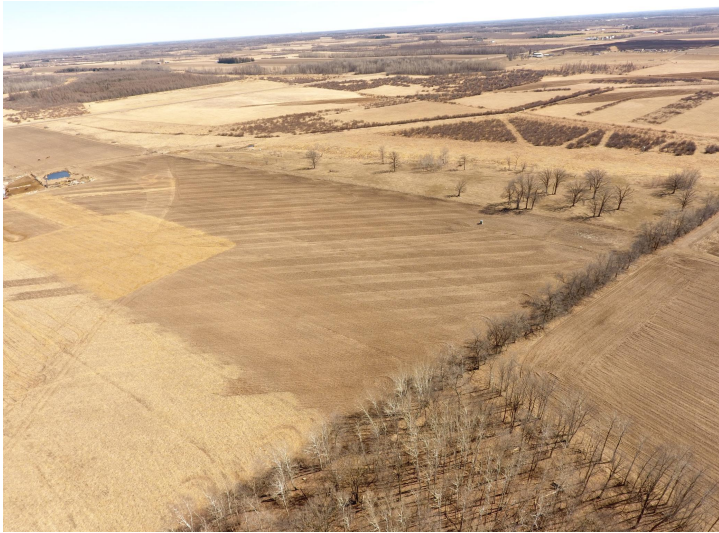
Call Affinity Real Estate

218-237-3333

info@affinityrealestate.com



Affinity Real Estate - 600 Park Avenue South - Park Rapids MN 56470



website: www.AffinityRealEstate.com | email: info@affinityrealestate.com | office: 218-237-3333 | fax: 218-237-3377



\$389,000
 MLS 6519837 Land
 62772 440th Street
 Wadena MN 56482



website: www.AffinityRealEstate.com | email: info@affinityrealestate.com | office: 218-237-3333 | fax:218-237-3377



\$389,000
MLS 6519837 Land
62772 440th Street
Wadena MN 56482