



MLS 6520058 Lake Land

\$499,900

Description:

Hunters Paradise has 79 acres on a heavily wooded parcel with the Crow Wing River running through it! 1200 feet +/- of river frontage. Very well-built 20 x 24 hunting cabin with great usability and sleeping areas. Come for the weekend or the hunt! Cabin is wired for use with a generator currently. Easy hook up to electricity If desired/ Great mix of hardwoods and pines, trail systems in place that lead you around the property. Great campsite area next to the Crow Wing River and easy level access to the river to launch your canoe or kayak. Additionally, thousands of acres of state land are directly north of this property, ensuring habitat and tons of wildlife. This property has it all, nature awaits you,

Additional Details:

Lot Acres	79
Lot Dimensions	1330x2572
School District	820
Taxes	\$2,176
Taxes with Assessments	\$2,176
Tax Year	2024

Additional Features:

Driving Directions:

From Nimrod go north on Hwy 18, turn left on 320th St, turn right on 243rd Ave, follow around the corner to the left, property will be on the left.



Listed By:
Bill Hansen Realty/Walker

Affinity Real Estate Inc. participates in the Regional Multiple Listing Service of Minnesota, Inc Broker Reciprocity (sm) program, allowing us to display other broker's listings on our website. All properties are subject to prior sale, change or withdrawal.



Call Affinity Real Estate

218-237-3333

info@affinityrealestate.com



Affinity Real Estate - 600 Park Avenue South - Park Rapids MN 56470



website: www.AffinityRealEstate.com | email: info@affinityrealestate.com | office: 218-237-3333 | fax: 218-237-3377

Affinity
REAL ESTATE INC

\$499,900
MLS 6520058 Lake Land
24051 324th Street
Sebeka MN 56477



website: www.AffinityRealEstate.com | email: info@affinityrealestate.com | office: 218-237-3333 | fax:218-237-3377

Affinity
REAL ESTATE INC

\$499,900
MLS 6520058 Lake Land
24051 324th Street
Sebeka MN 56477



website: www.AffinityRealEstate.com | email: info@affinityrealestate.com | office: 218-237-3333 | fax:218-237-3377



\$499,900
MLS 6520058 Lake Land
24051 324th Street
Sebeka MN 56477



website: www.AffinityRealEstate.com | email: info@affinityrealestate.com | office: 218-237-3333 | fax:218-237-3377



\$499,900
MLS 6520058 Lake Land
24051 324th Street
Sebeka MN 56477



website: www.AffinityRealEstate.com | email: info@affinityrealestate.com | office: 218-237-3333 | fax:218-237-3377



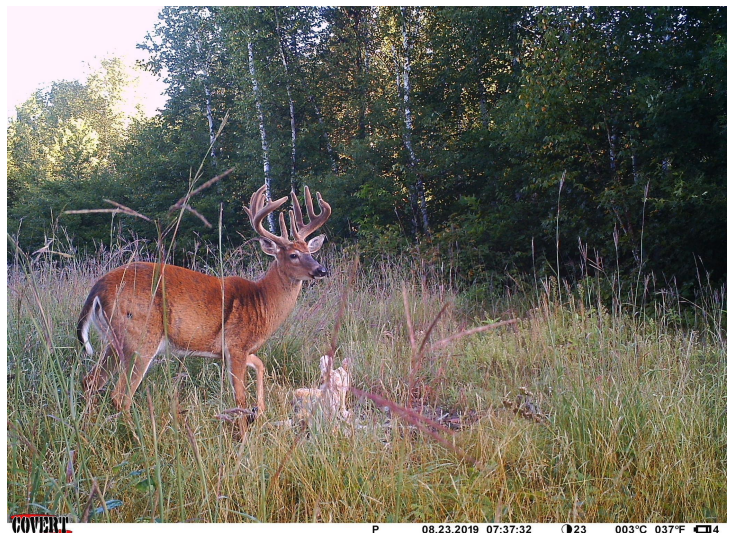
\$499,900
MLS 6520058 Lake Land
24051 324th Street
Sebeka MN 56477



website: www.AffinityRealEstate.com | email: info@affinityrealestate.com | office: 218-237-3333 | fax:218-237-3377

Affinity
REAL ESTATE INC

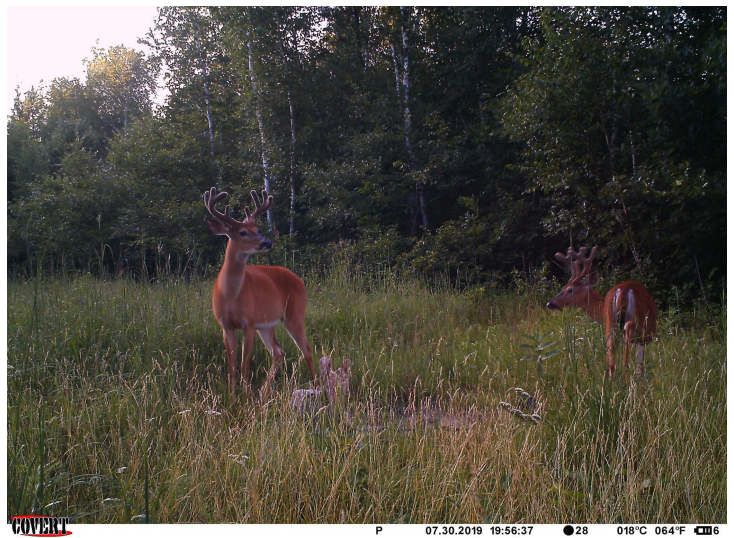
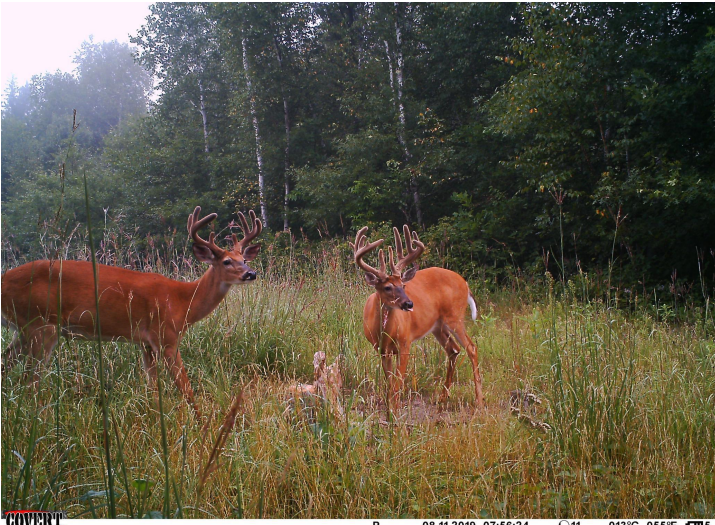
\$499,900
MLS 6520058 Lake Land
24051 324th Street
Sebeka MN 56477



website: www.AffinityRealEstate.com | email: info@affinityrealestate.com | office: 218-237-3333 | fax:218-237-3377



\$499,900
MLS 6520058 Lake Land
24051 324th Street
Sebeka MN 56477



website: www.AffinityRealEstate.com | email: info@affinityrealestate.com | office: 218-237-3333 | fax:218-237-3377



\$499,900
 MLS 6520058 Lake Land
 24051 324th Street
 Sebeka MN 56477