



MLS 6520698 Commercial Sale

\$515,000

Description:

Invest in a 5 unit apartment building overlooking a lake on over 10 acres of land! This property is less than 3 minutes to Park Rapids and just north of Long Lake, overlooking Mud Lake. Fabulous setting! The 2 buildings contain 5 separate units. Two of the units are 3 bedroom, 2 bath units. One is a main level unit and the other 3 bedroom is an upper level unit. There are also 3 units that have 2 bedrooms and 1 bath. Of these 2 bedroom units, two of them are upper level and one is lower. All have many recent updates and are in very nice condition. Always full, there is a huge demand for rentals in the area.

Additional Details:

Year Built	1960
Lot Acres	10.55
Lot Dimensions	1022x596x690x745
School District	309
Taxes	\$3,290
Taxes with Assessments	\$3,290
Tax Year	2023

Additional Features:

Fuel: Electric, Propane **Heat:** Baseboard, Dual, Other

Driving Directions:

From Park Rapids, East on Hwy 34 about 3 miles to the Long Lake access (fill) on the right. Continue for 1/8 mile to the first roadway on the left (north) on Hwy 34 just past Mud Lake, turn left on to Estate Drive and follow to the property.



Listed By:
Keller Williams Realty Professionals

Affinity Real Estate Inc. participates in the Regional Multiple Listing Service of Minnesota, Inc Broker Reciprocity (sm) program, allowing us to display other broker's listings on our website. All properties are subject to prior sale, change or withdrawal.



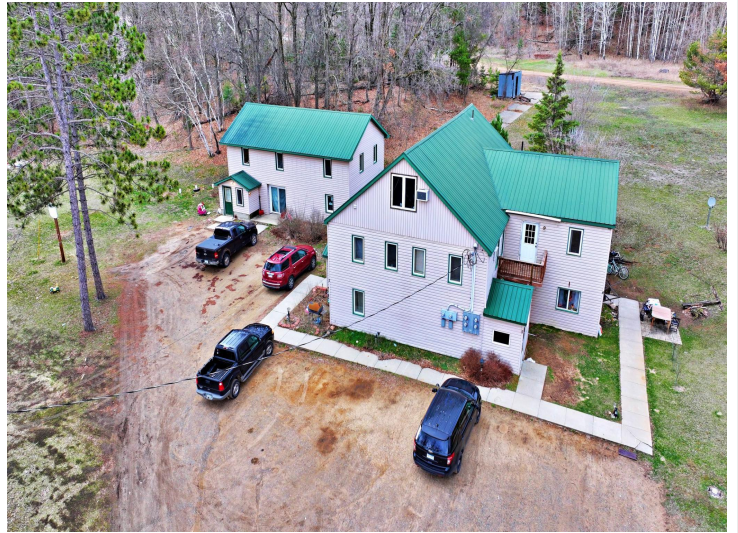
Call Affinity Real Estate

218-237-3333

info@affinityrealestate.com



Affinity Real Estate - 600 Park Avenue South - Park Rapids MN 56470



website: www.AffinityRealEstate.com | email: info@affinityrealestate.com | office: 218-237-3333 | fax: 218-237-3377



\$515,000
 MLS 6520698 Commercial
 Sale
 18894 Estate Drive
 Park Rapids MN 56470



website: www.AffinityRealEstate.com | email: info@affinityrealestate.com | office: 218-237-3333 | fax: 218-237-3377



\$515,000
MLS 6520698 Commercial
Sale
18894 Estate Drive
Park Rapids MN 56470