



MLS 6521140 Lake Home

\$134,900

1,092 sq ft
1 bedrooms
1 baths

7671 Eastgate Road
Motley MN 56466

Waterfront: Meadow

Status: Active

Description:

Enjoy the cabin life or make it your home!! This property is conveniently located in Wilderness Park which provides you with access to an inground pool, clubhouse, tennis courts, along with lake and beach access!! This property is also located close to many miles of snowmobile and ATV trails to explore!! Inside this property features an open concept living space, kitchen/bar space, 3/4 bath, sleeping space that could be converted to a more private bedroom space or use it as a large bunk bedroom to accommodate all your guests!! This property also features a massive sunroom with tongue and groove pine finishes that can be used for a variety of uses!! Don't miss the detached bunkhouse which could be used for overflow sleeping space for your guests!! Outside the property features 1.8 acres, mature trees, fire pit and garage space!! Seller will contribute 50% towards the cost of a new well!!

Additional Details:

Year Built	2004
Lot Acres	1.8
Lot Dimensions	300x291
Garage Stalls	1
School District	2174
Taxes	\$410
Taxes with Assessments	\$476
Tax Year	2024

Additional Features:

Fuel: Propane **Heat:** Forced Air

Driving Directions:

From Nisswa go North on HWY 371 to Left on County Road 29 to a Right on County Road 1 to a Left on 72nd St SW to a Left at T on 45th Ave SW and Follow through Gate on Eastgate Road SW to property on right located at 7671 Eastgate Road SW



Listed By:
Edina Realty, Inc.

Affinity Real Estate Inc. participates in the Regional Multiple Listing Service of Minnesota, Inc Broker Reciprocity (sm) program, allowing us to display other broker's listings on our website. All properties are subject to prior sale, change or withdrawal.



Call Affinity Real Estate

218-237-3333

info@affinityrealestate.com



Affinity Real Estate - 600 Park Avenue South - Park Rapids MN 56470



website: www.AffinityRealEstate.com | email: info@affinityrealestate.com | office: 218-237-3333 | fax: 218-237-3377



\$134,900
 MLS 6521140 Lake Home
 7671 Eastgate Road
 Motley MN 56466



website: www.AffinityRealEstate.com | email: info@affinityrealestate.com | office: 218-237-3333 | fax: 218-237-3377



\$134,900
 MLS 6521140 Lake Home
 7671 Eastgate Road
 Motley MN 56466



website: www.AffinityRealEstate.com | email: info@affinityrealestate.com | office: 218-237-3333 | fax: 218-237-3377

Affinity
REAL ESTATE INC

\$134,900
MLS 6521140 Lake Home
7671 Eastgate Road
Motley MN 56466



website: www.AffinityRealEstate.com | email: info@affinityrealestate.com | office: 218-237-3333 | fax: 218-237-3377



\$134,900
 MLS 6521140 Lake Home
 7671 Eastgate Road
 Motley MN 56466



website: www.AffinityRealEstate.com | email: info@affinityrealestate.com | office: 218-237-3333 | fax: 218-237-3377

Affinity
REAL ESTATE INC

\$134,900
MLS 6521140 Lake Home
7671 Eastgate Road
Motley MN 56466



website: www.AffinityRealEstate.com | email: info@affinityrealestate.com | office: 218-237-3333 | fax: 218-237-3377

Affinity
REAL ESTATE INC

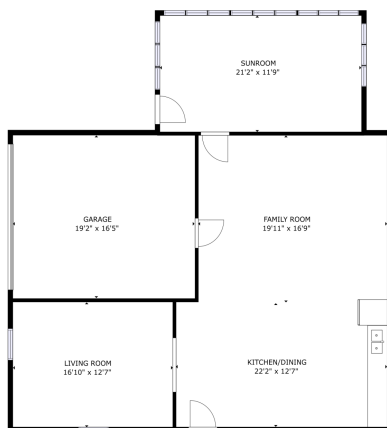
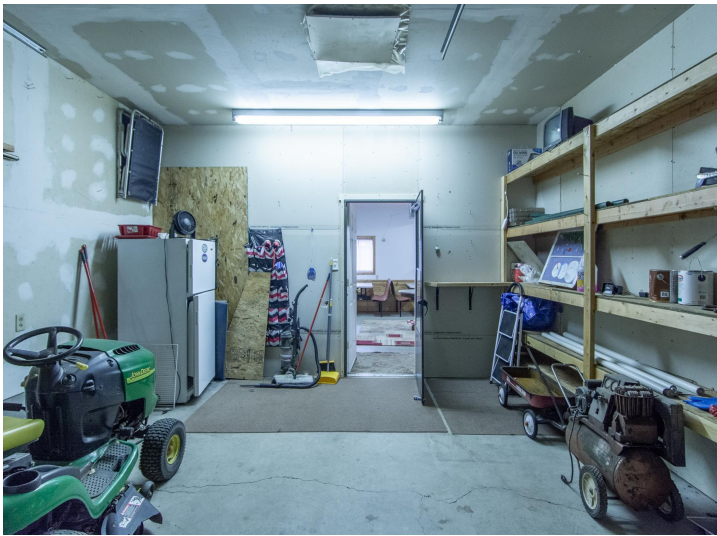
\$134,900
MLS 6521140 Lake Home
7671 Eastgate Road
Motley MN 56466



website: www.AffinityRealEstate.com | email: info@affinityrealestate.com | office: 218-237-3333 | fax: 218-237-3377

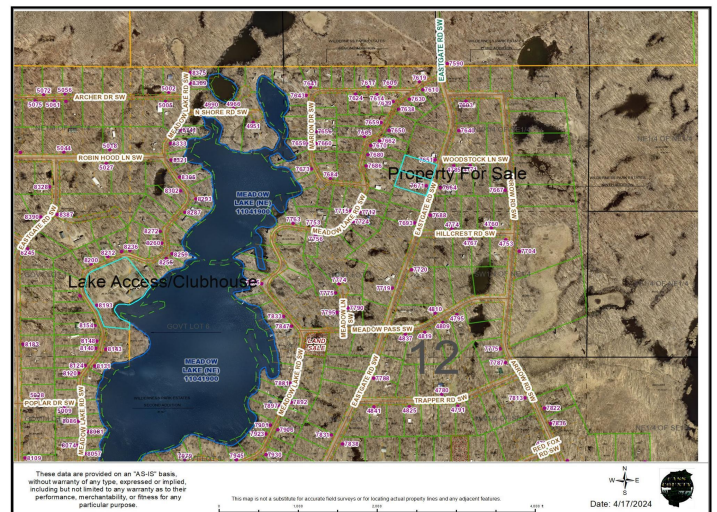
Affinity
REAL ESTATE INC

\$134,900
MLS 6521140 Lake Home
7671 Eastgate Road
Motley MN 56466



GRAND TOTAL AREA
6,241 sq. ft.
FAMILY ROOM (19'1" x 16'9")
TOTAL 1,000 sq. ft.

Matterport



website: www.AffinityRealEstate.com | email: info@affinityrealestate.com | office: 218-237-3333 | fax: 218-237-3377

Affinity
REAL ESTATE INC

\$134,900
MLS 6521140 Lake Home
7671 Eastgate Road
Motley MN 56466