



MLS 6521389 Lake Home

\$364,900

1,041 sq ft
2 bedrooms
1 baths

24674 Horseshoe Road
Akeley MN 56433

Waterfront: Eleventh Crow Wing

Status: Active

Description:

Wow! Are you craving a weekend escape from the hustle and bustle of city life? Here it is! 12 acres, 265 ft of Level lakeshore on 11th Crow Wing Lake & approx. 1,000 feet of shoreline on Cramer Lake. Maybe you're an avid angler in search of the perfect fishing spot? Maybe you just want a place to hang out on the lake or enjoy off-roading and want a place and call your own? Here it is- Located in the Akeley area with tons of recreational opportunities. This property has NEVER been for sale!! 11th Crow wing has over 700 acres of water. Cramer Lake is about 17 feet deep, both lakes have been great fisheries. Ranch style cabin has been used seasonally. 2 bedrooms/1 bath, main floor laundry, PLUS- an unfinished partial basement, and a bonus Attic Space! Lots of opportunities at this property! Amidst the great views; you'll find a relaxing fire pit area, deck, 20x30 garage, 20x32 pole shed, nostalgic stone storage building and a garden shed. Enjoy the Panoramic lake views from all around!

Additional Details:

Year Built	1920
Lot Acres	12.3
Lot Dimensions	265x89x295x468x161x885
Garage Stalls	8
School District	113
Taxes	\$1,150
Taxes with Assessments	\$1,150
Tax Year	2023

Additional Features:

Fuel: Electric **Heat:** Other

Driving Directions:

From Akeley take Mill st to pleasant ave ne turn on 64. Turn right onto hazel, turn left onto horseshoe. Property is on the bend on the right side. 11th crow wing lakeshore is on the left side



Listed By:
Headwaters Realty Services

Affinity Real Estate Inc. participates in the Regional Multiple Listing Service of Minnesota, Inc Broker Reciprocity (sm) program, allowing us to display other broker's listings on our website. All properties are subject to prior sale, change or withdrawal.



Call Affinity Real Estate

218-237-3333

info@affinityrealestate.com



Affinity Real Estate - 600 Park Avenue South - Park Rapids MN 56470



website: www.AffinityRealEstate.com | email: info@affinityrealestate.com | office: 218-237-3333 | fax: 218-237-3377



\$364,900
 MLS 6521389 Lake Home
 24674 Horseshoe Road
 Akeley MN 56433



website: www.AffinityRealEstate.com | email: info@affinityrealestate.com | office: 218-237-3333 | fax: 218-237-3377



\$364,900

MLS 6521389 Lake Home
24674 Horseshoe Road
Akeley MN 56433



website: www.AffinityRealEstate.com | email: info@affinityrealestate.com | office: 218-237-3333 | fax: 218-237-3377

Affinity
REAL ESTATE INC

\$364,900

MLS 6521389 Lake Home
24674 Horseshoe Road
Akeley MN 56433



website: www.AffinityRealEstate.com | email: info@affinityrealestate.com | office: 218-237-3333 | fax: 218-237-3377



\$364,900
MLS 6521389 Lake Home
24674 Horseshoe Road
Akeley MN 56433



website: www.AffinityRealEstate.com | email: info@affinityrealestate.com | office: 218-237-3333 | fax: 218-237-3377

Affinity
REAL ESTATE INC

\$364,900
MLS 6521389 Lake Home
24674 Horseshoe Road
Akeley MN 56433



website: www.AffinityRealEstate.com | email: info@affinityrealestate.com | office: 218-237-3333 | fax: 218-237-3377

Affinity
REAL ESTATE INC

\$364,900
MLS 6521389 Lake Home
24674 Horseshoe Road
Akeley MN 56433



website: www.AffinityRealEstate.com | email: info@affinityrealestate.com | office: 218-237-3333 | fax: 218-237-3377

Affinity
REAL ESTATE INC

\$364,900
MLS 6521389 Lake Home
24674 Horseshoe Road
Akeley MN 56433



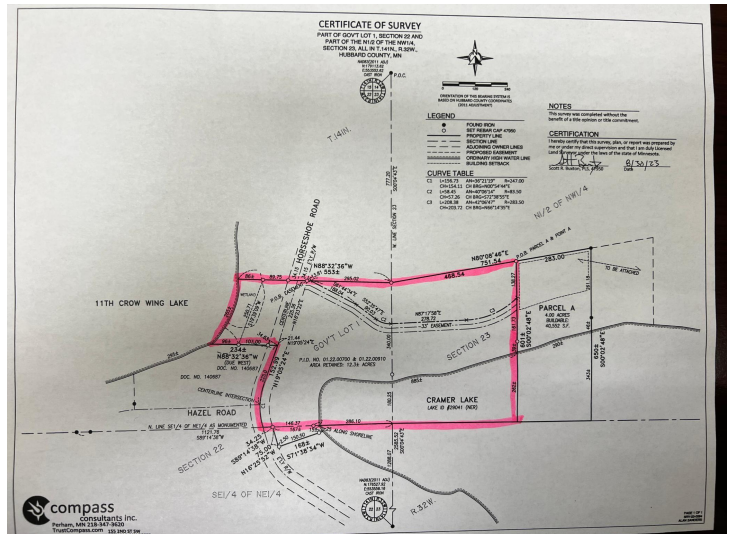
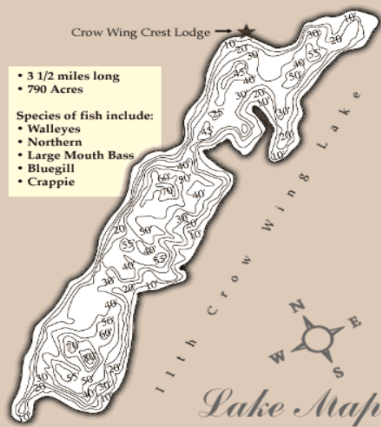
website: www.AffinityRealEstate.com | email: info@affinityrealestate.com | office: 218-237-3333 | fax: 218-237-3377

Affinity
REAL ESTATE INC

\$364,900
MLS 6521389 Lake Home
24674 Horseshoe Road
Akeley MN 56433



Lake Map



website: www.AffinityRealEstate.com | email: info@affinityrealestate.com | office: 218-237-3333 | fax: 218-237-3377

Affinity
REAL ESTATE INC

\$364,900
MLS 6521389 Lake Home
24674 Horseshoe Road
Akeley MN 56433



website: www.AffinityRealEstate.com | email: info@affinityrealestate.com | office: 218-237-3333 | fax: 218-237-3377



\$364,900
 MLS 6521389 Lake Home
 24674 Horseshoe Road
 Akeley MN 56433



website: www.AffinityRealEstate.com | email: info@affinityrealestate.com | office: 218-237-3333 | fax: 218-237-3377

Affinity
REAL ESTATE INC

\$364,900
MLS 6521389 Lake Home
24674 Horseshoe Road
Akeley MN 56433



website: www.AffinityRealEstate.com | email: info@affinityrealestate.com | office: 218-237-3333 | fax: 218-237-3377



\$364,900

MLS 6521389 Lake Home
24674 Horseshoe Road
Akeley MN 56433