



MLS 6521450 Lake Home

\$3,500,000

2,438 sq ft
4 bedrooms
4 baths

5925 Wildamere Drive
Pine River MN 56474

Waterfront: Whitefish Lake
(18031000)

Status: Active

Description:

Welcome to a slice of paradise on the shores of Upper Whitefish Lake. Nestled amidst a stunning stand of trees, this legacy estate spans 7.71 acres of pure privacy and tranquility. With 317 ft of prime sand frontage, enjoy unparalleled southern exposure on your own sandy beach. The main cabin boasts 1-BR, offering cozy comfort and rustic charm. Additionally, a lakeside 1-BR guest cabin and a separate 2-BR guest cabin provide ample space for family and friends to retreat and unwind. Storage is no issue with a detached 3-car insulated garage and a storage barn, ensuring plenty of space for all your outdoor gear and equipment. The lakeside insulated boat house adds to the convenience and functionality of this remarkable property. All structures are designed for year-round enjoyment, allowing you to immerse yourself in the beauty of the changing seasons. Surrounded by mature pine trees, this property offers a picturesque backdrop. Come and experience one of the finest settings on the WFC.

Additional Details:

Year Built	1990
Lot Acres	7.73
Lot Dimensions	317 x IRR
Garage Stalls	4
School District	2174
Taxes	\$11,686
Taxes with Assessments	\$11,736
Tax Year	2024

Additional Features:

Fuel: Propane **Heat:** Baseboard, Fireplace(s), Geothermal

Driving Directions:

From Hwy 371, turn onto Co Hwy 15 for 5.3 miles, then turn right onto Wildamere Drive for .5 miles, the estate will be located on the right at 5925 Wildamere Drive.



Listed By:
Larson Group Real Estate/Kelle

Affinity Real Estate Inc. participates in the Regional Multiple Listing Service of Minnesota, Inc Broker Reciprocity (sm) program, allowing us to display other broker's listings on our website. All properties are subject to prior sale, change or withdrawal.



Call Affinity Real Estate

218-237-3333

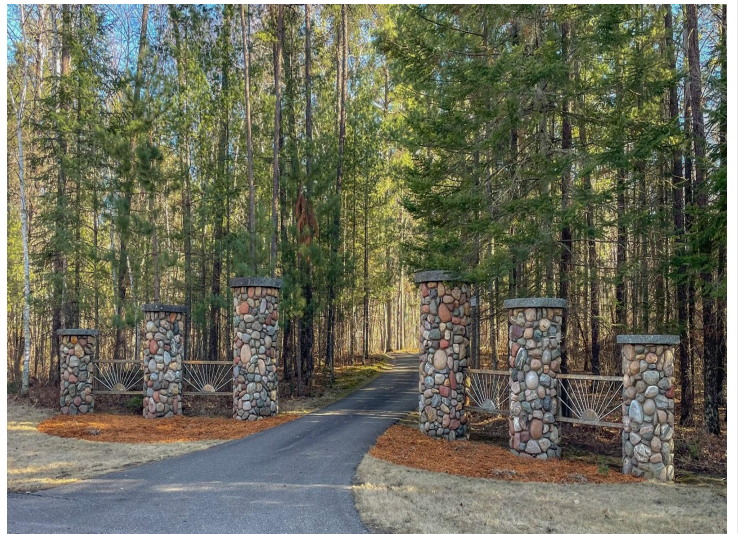
info@affinityrealestate.com



Affinity Real Estate - 600 Park Avenue South - Park Rapids MN 56470



Upper Whitefish Lake



website: www.AffinityRealEstate.com | email: info@affinityrealestate.com | office: 218-237-3333 | fax: 218-237-3377



\$3,500,000

MLS 6521450 Lake Home
5925 Wildamere Drive
Pine River MN 56474



website: www.AffinityRealEstate.com | email: info@affinityrealestate.com | office: 218-237-3333 | fax: 218-237-3377

Affinity
REAL ESTATE INC

\$3,500,000

MLS 6521450 Lake Home
5925 Wildamere Drive
Pine River MN 56474



website: www.AffinityRealEstate.com | email: info@affinityrealestate.com | office: 218-237-3333 | fax: 218-237-3377

Affinity
REAL ESTATE INC

\$3,500,000

MLS 6521450 Lake Home
5925 Wildamere Drive
Pine River MN 56474



website: www.AffinityRealEstate.com | email: info@affinityrealestate.com | office: 218-237-3333 | fax: 218-237-3377

Affinity
REAL ESTATE INC

\$3,500,000

MLS 6521450 Lake Home
5925 Wildamere Drive
Pine River MN 56474



website: www.AffinityRealEstate.com | email: info@affinityrealestate.com | office: 218-237-3333 | fax: 218-237-3377

Affinity
REAL ESTATE INC

\$3,500,000

MLS 6521450 Lake Home
5925 Wildamere Drive
Pine River MN 56474



website: www.AffinityRealEstate.com | email: info@affinityrealestate.com | office: 218-237-3333 | fax: 218-237-3377

Affinity
REAL ESTATE INC

\$3,500,000

MLS 6521450 Lake Home
5925 Wildamere Drive
Pine River MN 56474



website: www.AffinityRealEstate.com | email: info@affinityrealestate.com | office: 218-237-3333 | fax: 218-237-3377



\$3,500,000

MLS 6521450 Lake Home
5925 Wildamere Drive
Pine River MN 56474



website: www.AffinityRealEstate.com | email: info@affinityrealestate.com | office: 218-237-3333 | fax: 218-237-3377



\$3,500,000

MLS 6521450 Lake Home
5925 Wildamere Drive
Pine River MN 56474



website: www.AffinityRealEstate.com | email: info@affinityrealestate.com | office: 218-237-3333 | fax: 218-237-3377



\$3,500,000

MLS 6521450 Lake Home
5925 Wildamere Drive
Pine River MN 56474

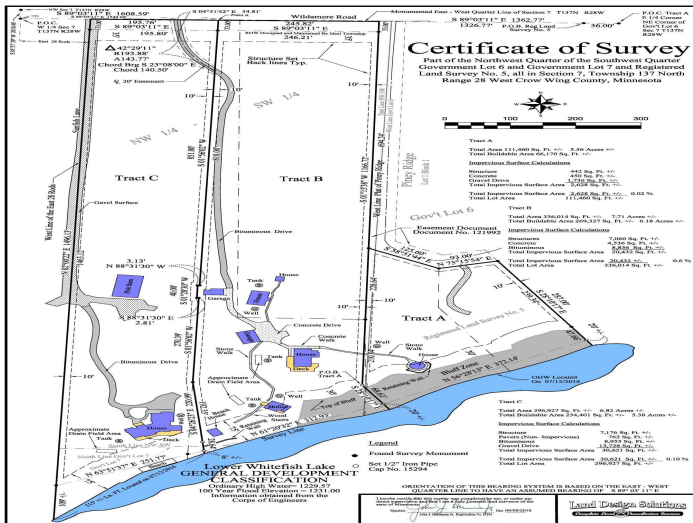


website: www.AffinityRealEstate.com | email: info@affinityrealestate.com | office: 218-237-3333 | fax: 218-237-3377



\$3,500,000

MLS 6521450 Lake Home
5925 Wildamere Drive
Pine River MN 56474



website: www.AffinityRealEstate.com | email: info@affinityrealestate.com | office: 218-237-3333 | fax: 218-237-3377



\$3,500,000

MLS 6521450 Lake Home
 5925 Wildamere Drive
 Pine River MN 56474