



MLS 6521665 Lake Land

\$399,000

Description:

Lot 4 - marked by yellow flags - this is the lot with the old boat house on it. Lot flags are approximate lot lines. Survey will be provided to buyer.

Additional Details:

Lot Acres	0.67
Lot Dimensions	99x304x53x47x335
School District	306
Taxes	\$1,206
Taxes with Assessments	\$1,206
Tax Year	2023

Additional Features:

Driving Directions:

From Bemidji: 71 So. straight onto Hwy 200 to Right on 64 for 3.5 mi. to Left on So. Kabekona Rd.(Cty. 37)



Listed By:
Coldwell Banker Realty

Affinity Real Estate Inc. participates in the Regional Multiple Listing Service of Minnesota, Inc Broker Reciprocity (sm) program, allowing us to display other broker's listings on our website. All properties are subject to prior sale, change or withdrawal.



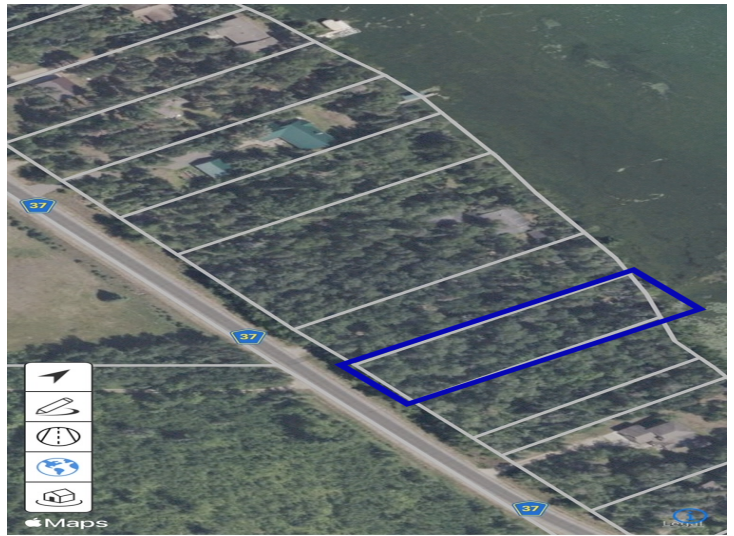
Call Affinity Real Estate

218-237-3333

info@affinityrealestate.com



Affinity Real Estate - 600 Park Avenue South - Park Rapids MN 56470



website: www.AffinityRealEstate.com | email: info@affinityrealestate.com | office: 218-237-3333 | fax:218-237-3377



\$399,000
MLS 6521665 Lake Land
xxxx County 37
Laporte MN 56461