



MLS 6521693 Land

\$424,500

0.61 Acres
Raw Land

xxxx County 37
Laporte MN 56461

Status: Pending

Description:

Lot 5 - this lot is marked by pink flags - flags mark approximate lot lines - official survey will be given to the buyer

Additional Details:

Lot Acres	0.61
Lot Dimensions	100x283x44x55x304
School District	306
Taxes	\$938
Taxes with Assessments	\$938
Tax Year	2023

Additional Features:

Driving Directions:

From Bemidji: 71 So. straight onto Hwy 200 to Right on 64 for 3.5 mi. to Left on So. Kabekona Rd.(Cty. 37)



Listed By:
Coldwell Banker Realty

Affinity Real Estate Inc. participates in the Regional Multiple Listing Service of Minnesota, Inc Broker Reciprocity (sm) program, allowing us to display other broker's listings on our website. All properties are subject to prior sale, change or withdrawal.



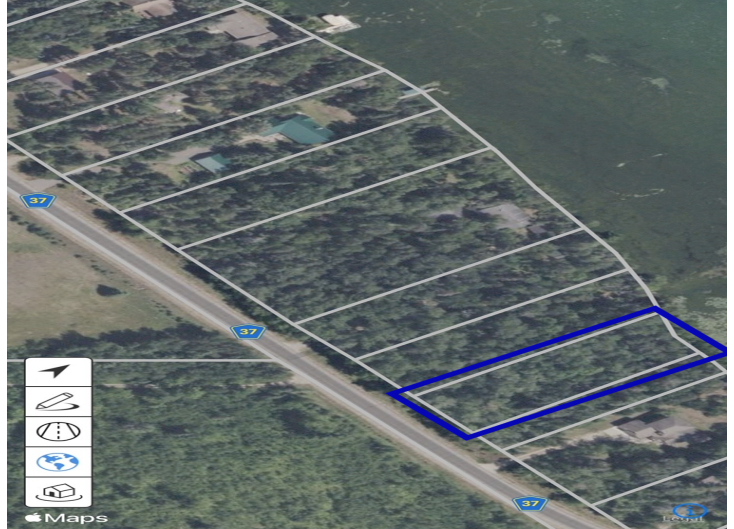
Call Affinity Real Estate

218-237-3333

info@affinityrealestate.com



Affinity Real Estate - 600 Park Avenue South - Park Rapids MN 56470



website: www.AffinityRealEstate.com | email: info@affinityrealestate.com | office: 218-237-3333 | fax:218-237-3377



\$424,500
MLS 6521693 Land
xxxx County 37
Laporte MN 56461