



MLS 6521709 Lake Land

\$29,900

Description:

Nicely wooded lot with a cleared building/camping area. Outlot access to County Lake (Environmental Lake). Minutes away from Leech Lake, Big Boy Lake and many others in the Longville lakes area. No covenants or restrictions. Bring your camper or build.

Additional Details:

Lot Acres	1.4
Lot Dimensions	245x234x256x255
School District	118
Taxes	\$100
Taxes with Assessments	\$100
Tax Year	2024

Additional Features:

Driving Directions:

From Longville take State Highway 84 north to right on Highway 200. Continue 2.1 miles to Right on Eagle Claw Drive then Left on Eagle Claw Lane to property and sign on left.



Listed By:
Rusty's Up North Realty

Affinity Real Estate Inc. participates in the Regional Multiple Listing Service of Minnesota, Inc Broker Reciprocity (sm) program, allowing us to display other broker's listings on our website. All properties are subject to prior sale, change or withdrawal.



Call Affinity Real Estate

218-237-3333

info@affinityrealestate.com



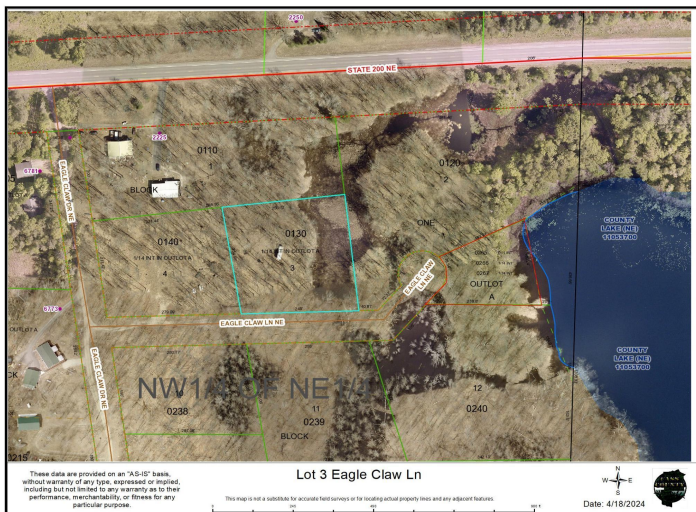
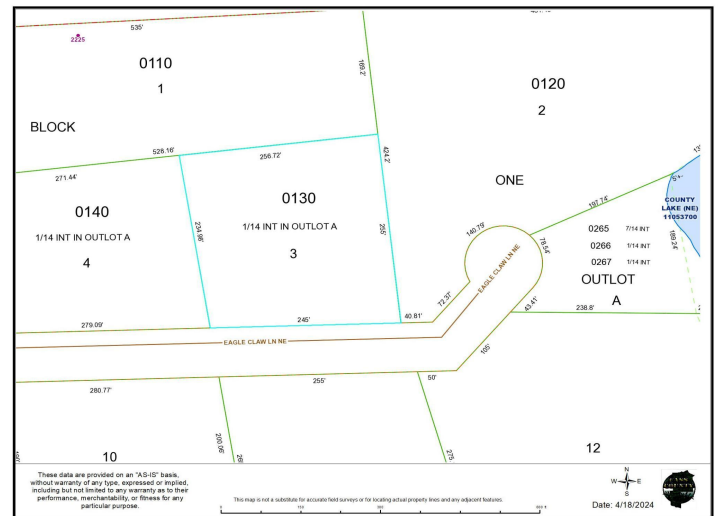
Affinity Real Estate - 600 Park Avenue South - Park Rapids MN 56470



website: www.AffinityRealEstate.com | email: info@affinityrealestate.com | office: 218-237-3333 | fax: 218-237-3377



\$29,900
MLS 6521709 Lake Land
xxx Eagle Claw Lane
Remer MN 56672



website: www.AffinityRealEstate.com | email: info@affinityrealestate.com | office: 218-237-3333 | fax: 218-237-3377



\$29,900
 MLS 6521709 Lake Land
 xxx Eagle Claw Lane
 Remer MN 56672