



MLS 6521791 Lake Land

\$424,900

Description:

Lot 3 - this lot is marked with pink flags. This is the lot just to the south of the cabin that has the small play house on it. Flags on the lot are marking approximate lot lines - official survey will be supplied to the buyer

Additional Details:

Lot Acres	0.72
Lot Dimensions	99x335x37x64x335
School District	306
Taxes	\$1,206
Taxes with Assessments	\$1,206
Tax Year	2023

Additional Features:

Driving Directions:

From Bemidji: 71 So. straight onto Hwy 200 to Right on 64 for 3.5 mi. to Left on So. Kabekona Rd.(Cty. 37)



Listed By:
Coldwell Banker Realty

Affinity Real Estate Inc. participates in the Regional Multiple Listing Service of Minnesota, Inc Broker Reciprocity (sm) program, allowing us to display other broker's listings on our website. All properties are subject to prior sale, change or withdrawal.



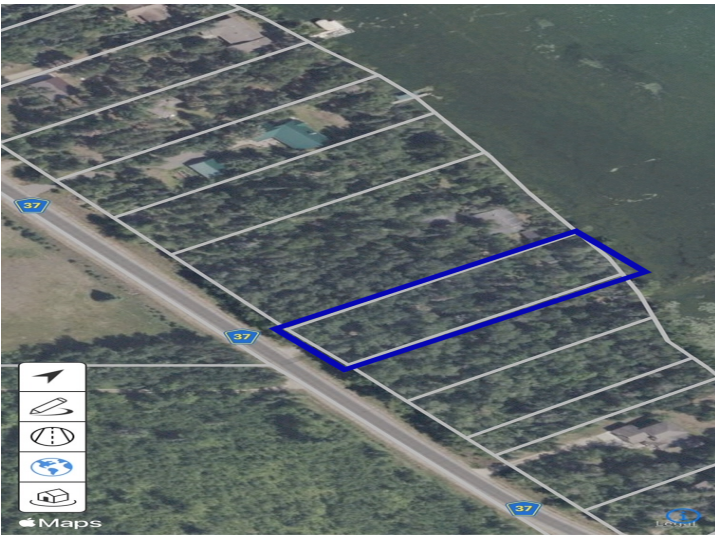
Call Affinity Real Estate

218-237-3333

info@affinityrealestate.com



Affinity Real Estate - 600 Park Avenue South - Park Rapids MN 56470



website: www.AffinityRealEstate.com | email: info@affinityrealestate.com | office: 218-237-3333 | fax:218-237-3377



\$424,900
 MLS 6521791 Lake Land
 xxxx County 37
 Laporte MN 56461